



Fliz1 Polyclonal Antibody

Catalog No	BYab-01714
Isotype	IgG
Reactivity	Human;Rat;Mouse;
Applications	WB;IHC;IF;ELISA
Gene Name	ZC3H8
Protein Name	Zinc finger CCCH domain-containing protein 8
Immunogen	The antiserum was produced against synthesized peptide derived from human ZC3H8. AA range:81-130
Specificity	Fliz1 Polyclonal Antibody detects endogenous levels of Fliz1 protein.
Formulation	Liquid in PBS containing 50% glycerol, 0.5% BSA and 0.02% sodium azide.
Source	Polyclonal, Rabbit,IgG
Purification	The antibody was affinity-purified from rabbit antiserum by affinity-chromatography using epitope-specific immunogen.
Dilution	WB: 1/500 - 1/2000. IHC: 1/100 - 1/300. ELISA: 1/40000.. IF 1:50-200
Concentration	1 mg/ml
Purity	≥90%
Storage Stability	-20°C/1 year
Synonyms	ZC3H8; ZC3HDC8; Zinc finger CCCH domain-containing protein 8
Observed Band	40kD
Cell Pathway	Nucleus . Colocalizes with coilin in subnuclear cajal and histone locus bodies. Translocates in the LEC complex to cajal and histone locus bodies at snRNA genes in a ICE1-dependent manner. Associates to transcriptionally active chromatin at snRNA genes.
Tissue Specificity	Skin,
Function	PTM:Phosphorylated upon DNA damage, probably by ATM or ATR.,similarity:Contains 3 C3H1-type zinc fingers.,
Background	PTM:Phosphorylated upon DNA damage, probably by ATM or ATR.,similarity:Contains 3 C3H1-type zinc fingers.,
matters needing attention	Avoid repeated freezing and thawing!

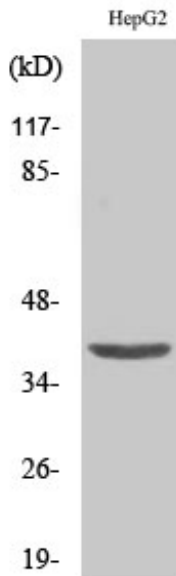
Nanjing BYabscience technology Co.,Ltd



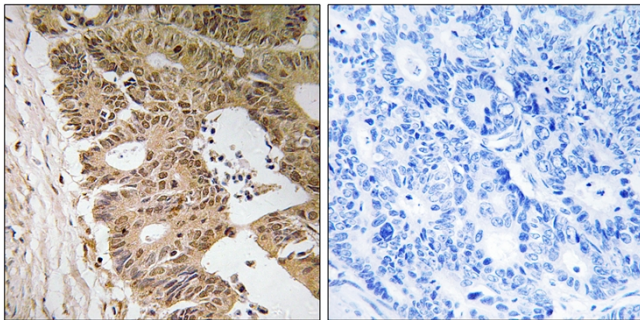
Usage suggestions

This product can be used in immunological reaction related experiments. For more information, please consult technical personnel.

Products Images

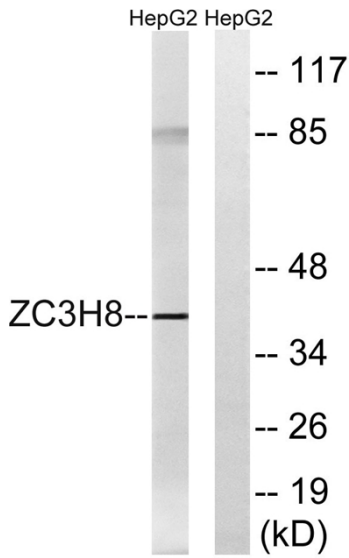


Western Blot analysis of various cells using Fliz1 Polyclonal Antibody cells nucleus extracted by Minute TM Cytoplasmic and Nuclear Fractionation kit (SC-003, Inventbiotech, MN, USA).

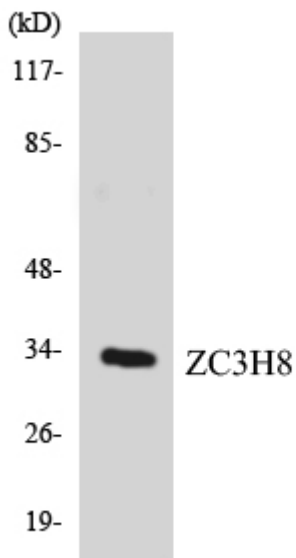


Immunohistochemistry analysis of paraffin-embedded human colon carcinoma tissue, using ZC3H8 Antibody. The picture on the right is blocked with the synthesized peptide.

Nanjing BYabscience technology Co.,Ltd



Western blot analysis of lysates from HepG2 cells, using ZC3H8 Antibody. The lane on the right is blocked with the synthesized peptide.



Western blot analysis of the lysates from COLO205 cells using ZC3H8 antibody.