



# ERF Polyclonal Antibody

<b>Catalog No</b>	BYab-01701
<b>Isotype</b>	IgG
<b>Reactivity</b>	Human;Mouse
<b>Applications</b>	WB;IHC;IF;ELISA
<b>Gene Name</b>	ERF
<b>Protein Name</b>	ETS domain-containing transcription factor ERF
<b>Immunogen</b>	The antiserum was produced against synthesized peptide derived from human ERF. AA range:492-541
<b>Specificity</b>	ERF Polyclonal Antibody detects endogenous levels of ERF protein.
<b>Formulation</b>	Liquid in PBS containing 50% glycerol, 0.5% BSA and 0.02% sodium azide.
<b>Source</b>	Polyclonal, Rabbit,IgG
<b>Purification</b>	The antibody was affinity-purified from rabbit antiserum by affinity-chromatography using epitope-specific immunogen.
<b>Dilution</b>	Western Blot: 1/500 - 1/2000. Immunohistochemistry: 1/100 - 1/300. Immunofluorescence: 1/200 - 1/1000. ELISA: 1/10000. Not yet tested in other applications.
<b>Concentration</b>	1 mg/ml
<b>Purity</b>	≥90%
<b>Storage Stability</b>	-20°C/1 year
<b>Synonyms</b>	ERF; ETS domain-containing transcription factor ERF; Ets2 repressor factor; PE-2
<b>Observed Band</b>	
<b>Cell Pathway</b>	Nucleus.
<b>Tissue Specificity</b>	Highest levels in testis, ovary, pancreas, and heart.
<b>Function</b>	function:Potent transcriptional repressor that binds to the H1 element of the Ets2 promoter. May regulate other genes involved in cellular proliferation. Required for extraembryonic ectoderm differentiation, ectoplacental cone cavity closure, and chorioallantoic attachment (By similarity). May be important for regulating trophoblast stem cell differentiation.,PTM:Phosphorylated by multiple kinases including probably ERK2. Phosphorylation regulates the activity of ERF.,sequence caution:The sequence differs from that shown because it seems to be derived from a pre-mRNA.,similarity:Belongs to the ETS family.,similarity:Contains 1 ETS DNA-binding domain.,tissue specificity:Highest

Nanjing BYabscience technology Co.,Ltd



levels in testis, ovary, pancreas, and heart.,

**Background**

ETS2 is a transcription factor and protooncogene involved in development, apoptosis, and the regulation of telomerase. The protein encoded by this gene binds to the ETS2 promoter and is a strong repressor of ETS2 transcription. Several transcript variants encoding two different isoforms have been found for this gene. [provided by RefSeq, Aug 2015],

**matters needing attention**

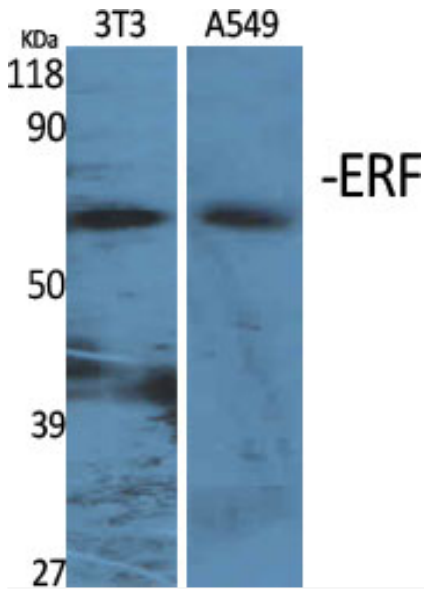
Avoid repeated freezing and thawing!

**Usage suggestions**

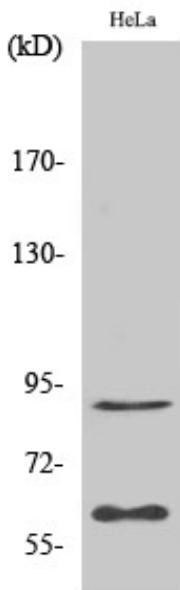
This product can be used in immunological reaction related experiments. For more information, please consult technical personnel.



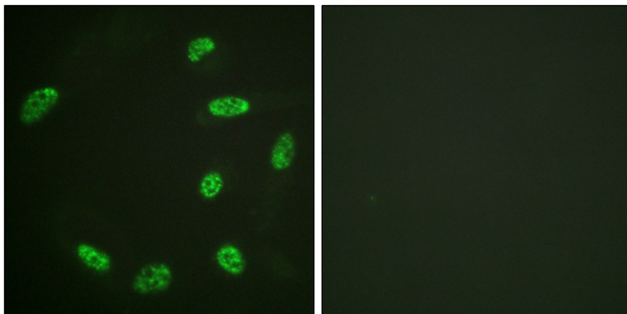
## Products Images



Western Blot analysis of various cells using ERF Polyclonal Antibody cells nucleus extracted by Minute TM Cytoplasmic and Nuclear Fractionation kit (SC-003, Inventbiotech, MN, USA).

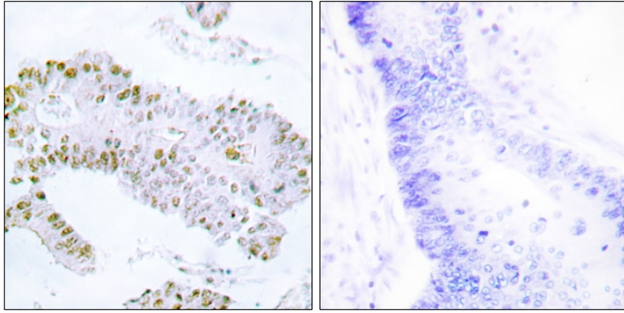


Western Blot analysis of HepG2 cells using ERF Polyclonal Antibody cells nucleus extracted by Minute TM Cytoplasmic and Nuclear Fractionation kit (SC-003, Inventbiotech, MN, USA).



Immunofluorescence analysis of HeLa cells, using ERF Antibody. The picture on the right is blocked with the synthesized peptide.

Nanjing BYabscience technology Co.,Ltd



Immunohistochemistry analysis of paraffin-embedded human colon carcinoma tissue, using ERF Antibody. The picture on the right is blocked with the synthesized peptide.