



Eme1 Polyclonal Antibody

Catalog No	BYab-01694
Isotype	IgG
Reactivity	Human;Rat;Mouse;
Applications	WB;ELISA
Gene Name	EME1
Protein Name	Crossover junction endonuclease EME1
Immunogen	Synthesized peptide derived from Eme1 . at AA range: 250-330
Specificity	Eme1 Polyclonal Antibody detects endogenous levels of Eme1 protein.
Formulation	Liquid in PBS containing 50% glycerol, 0.5% BSA and 0.02% sodium azide.
Source	Polyclonal, Rabbit,IgG
Purification	The antibody was affinity-purified from rabbit antiserum by affinity-chromatography using epitope-specific immunogen.
Dilution	Western Blot: 1/500 - 1/2000. ELISA: 1/5000. Not yet tested in other applications.
Concentration	1 mg/ml
Purity	≥90%
Storage Stability	-20°C/1 year
Synonyms	EME1; MMS4; Crossover junction endonuclease EME1; MMS4 homolog; hMMS4
Observed Band	65kD
Cell Pathway	Nucleus, nucleolus . Recruited to regions of DNA damage in S-phase cells.
Tissue Specificity	Epithelium,Placenta,
Function	cofactor:Magnesium.,function:Interacts with MUS81 to form a DNA structure-specific endonuclease with substrate preference for branched DNA structures with a 5'-end at the branch nick. Typical substrates include 3'-flap structures, replication forks and nicked Holliday junctions. May be required in mitosis for the processing of stalled or collapsed replication forks.,similarity:Belongs to the EME1/MMS4 family.,subcellular location:Recruited to regions of DNA damage in S-phase cells.,subunit:May self-associate. Interacts with MUS81. Interacts with ERCC4 and FANCM.,
Background	This gene encodes a protein that complexes with methyl methanesulfonate-sensitive UV-sensitive 81 protein to form an endonuclease complex. The encoded protein interacts with specific DNA structures including

Nanjing BYabscience technology Co.,Ltd



nicked Holliday junctions, 3'-flap structures and aberrant replication fork structures. This protein may be involved in repairing DNA damage and in maintaining genomic stability. Alternative splicing results in multiple transcript variants.[provided by RefSeq, Oct 2009],

matters needing attention

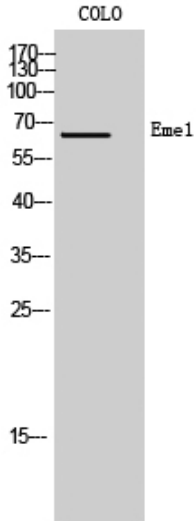
Avoid repeated freezing and thawing!

Usage suggestions

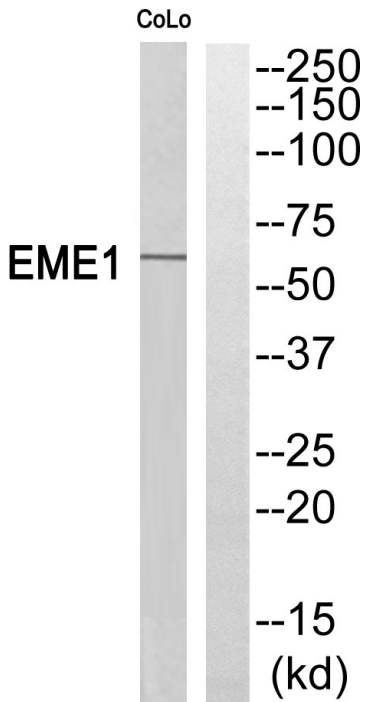
This product can be used in immunological reaction related experiments. For more information, please consult technical personnel.



Products Images



Western Blot analysis of COLO cells using Eme1 Polyclonal Antibody cells nucleus extracted by MinuteTM Cytoplasmic and Nuclear Fractionation kit (SC-003, Inventbiotech, MN, USA).



Western blot analysis of EME1 Antibody. The lane on the right is blocked with the EME1 peptide.