



# Elf-4 Polyclonal Antibody

<b>Catalog No</b>	BYab-01690
<b>Isotype</b>	IgG
<b>Reactivity</b>	Human;Mouse
<b>Applications</b>	WB;ELISA
<b>Gene Name</b>	ELF4
<b>Protein Name</b>	ETS-related transcription factor Elf-4
<b>Immunogen</b>	The antiserum was produced against synthesized peptide derived from human ELF4. AA range:178-227
<b>Specificity</b>	Elf-4 Polyclonal Antibody detects endogenous levels of Elf-4 protein.
<b>Formulation</b>	Liquid in PBS containing 50% glycerol, 0.5% BSA and 0.02% sodium azide.
<b>Source</b>	Polyclonal, Rabbit,IgG
<b>Purification</b>	The antibody was affinity-purified from rabbit antiserum by affinity-chromatography using epitope-specific immunogen.
<b>Dilution</b>	Western Blot: 1/500 - 1/2000. ELISA: 1/10000. Not yet tested in other applications.
<b>Concentration</b>	1 mg/ml
<b>Purity</b>	≥90%
<b>Storage Stability</b>	-20°C/1 year
<b>Synonyms</b>	ELF4; ELFR; MEF; ETS-related transcription factor Elf-4; E74-like factor 4; Myeloid Elf-1-like factor
<b>Observed Band</b>	70kD
<b>Cell Pathway</b>	Nucleus, PML body . Accumulation into PML nuclear bodies is mediated by PML.
<b>Tissue Specificity</b>	Abundantly expressed in the placenta and in a variety of myeloid leukemia cell lines. Moderate levels of expression in heart, lung, spleen, thymus, peripheral blood lymphocytes, ovary and colon. Lower levels of expression in Jurkat T-cells and other T-cell lines and no expression in brain.
<b>Function</b>	function:Transcriptional activator that binds to DNA sequences containing the consensus 5'-WGGA-3'. Transactivates promoters of the hematopoietic growth factor genes CSF2, IL3, IL8, and of the bovine lysozyme gene. Acts synergistically with RUNX1 to transactivate the IL3 promoter. Also transactivates the PRF1 promoter in natural killer (NK) cells. Plays a role in the development and function of NK and NK T-cells and in innate immunity.,induction:By ponisterone A in erythroleukemia cells.,similarity:Belongs to the ETS family.,similarity:Contains 1 ETS DNA-binding domain.,subcellular location:Accumulation into PML nuclear

Nanjing BYabscience technology Co.,Ltd



bodies is mediated by PML.,subunit:Interacts via an N-terminal region with the RUNX1 Runt domain. Interacts via its C-terminus with PML; this interaction enhances ELF4 transactivation of the bovine lysozyme gene.,tissue specificity:Abundantly expressed in the placenta and

**Background**

The protein encoded by this gene is a transcriptional activator that binds and activates the promoters of the CSF2, IL3, IL8, and PRF1 genes. The encoded protein is involved in natural killer cell development and function, innate immunity, and induction of cell cycle arrest in naive CD8+ cells. Two transcript variants encoding the same protein have been found for this gene.[provided by RefSeq, Jan 2010],

**matters needing attention**

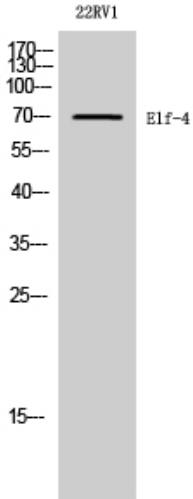
Avoid repeated freezing and thawing!

**Usage suggestions**

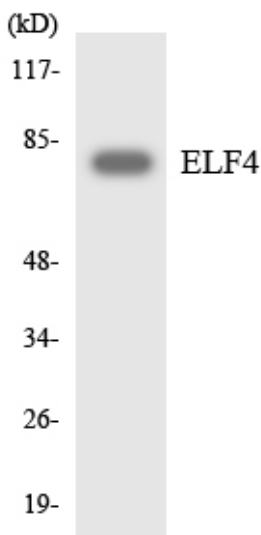
This product can be used in immunological reaction related experiments. For more information, please consult technical personnel.



## Products Images



Western Blot analysis of 22RV1 cells using E1f-4 Polyclonal Antibody diluted at 1:2000 cells nucleus extracted by Minute TM Cytoplasmic and Nuclear Fractionation kit (SC-003, Inventbiotech, MN, USA).



Western blot analysis of the lysates from RAW264.7 cells using ELF4 antibody.