



ECP Polyclonal Antibody

Catalog No	BYab-01678
Isotype	IgG
Reactivity	Human;Rat;Mouse;
Applications	WB;ELISA
Gene Name	RNASE3
Protein Name	Eosinophil cationic protein
Immunogen	The antiserum was produced against synthesized peptide derived from human ECP. AA range:102-151
Specificity	ECP Polyclonal Antibody detects endogenous levels of ECP protein.
Formulation	Liquid in PBS containing 50% glycerol, 0.5% BSA and 0.02% sodium azide.
Source	Polyclonal, Rabbit,IgG
Purification	The antibody was affinity-purified from rabbit antiserum by affinity-chromatography using epitope-specific immunogen.
Dilution	Western Blot: 1/500 - 1/2000. ELISA: 1/10000. Not yet tested in other applications.
Concentration	1 mg/ml
Purity	≥90%
Storage Stability	-20°C/1 year
Synonyms	RNASE3; ECP; RNS3; Eosinophil cationic protein; ECP; Ribonuclease 3; RNase 3
Observed Band	18kD
Cell Pathway	Secreted. Located in the matrix of eosinophil large specific granule, which are released following activation by an immune stimulus.
Tissue Specificity	Colon,Fetal liver,Peripheral blood granulocyte,
Function	disease:Induces the neurotoxic effect known as the Gordon phenomenon.,function:Cytotoxin and helminthotoxin with low-efficiency ribonuclease activity. Possesses a wide variety of biological activities. Exhibits antibacterial activity.,similarity:Belongs to the pancreatic ribonuclease family.,subcellular location:Matrix of eosinophil's large specific granule.,
Background	The protein encoded by this gene belongs to the pancreatic ribonuclease family, a subset of the ribonuclease A superfamily. The protein exhibits antimicrobial activity against pathogenic bacteria [provided by RefSeq, Oct 2014],

Nanjing BYabscience technology Co.,Ltd



matters needing attention

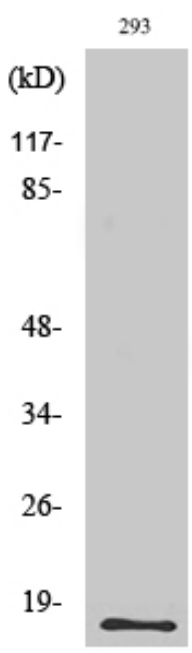
Avoid repeated freezing and thawing!

Usage suggestions

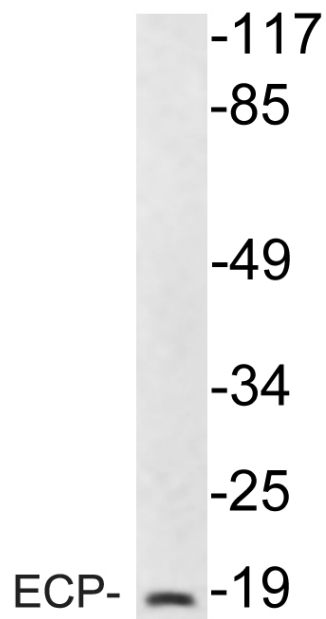
This product can be used in immunological reaction related experiments. For more information, please consult technical personnel.



Products Images



Western Blot analysis of various cells using ECP Polyclonal Antibody



Western blot analysis of lysate from 293 cells, using ECP antibody.