



DPF2 Polyclonal Antibody

Catalog No	BYab-01668
Isotype	IgG
Reactivity	Human;Mouse
Applications	WB;IHC;IF;ELISA
Gene Name	DPF2
Protein Name	Zinc finger protein ubi-d4
Immunogen	The antiserum was produced against synthesized peptide derived from human REQU. AA range:151-200
Specificity	DPF2 Polyclonal Antibody detects endogenous levels of DPF2 protein.
Formulation	Liquid in PBS containing 50% glycerol, 0.5% BSA and 0.02% sodium azide.
Source	Polyclonal, Rabbit,IgG
Purification	The antibody was affinity-purified from rabbit antiserum by affinity-chromatography using epitope-specific immunogen.
Dilution	Western Blot: 1/500 - 1/2000. Immunohistochemistry: 1/100 - 1/300. Immunofluorescence: 1/200 - 1/1000. ELISA: 1/10000. Not yet tested in other applications.
Concentration	1 mg/ml
Purity	≥90%
Storage Stability	-20°C/1 year
Synonyms	DPF2; BAF45D; REQ; UBID4; Zinc finger protein ubi-d4; Apoptosis response zinc finger protein; BRG1-associated factor 45D; BAF45D; D4; zinc and double PHD fingers family 2; Protein requiem
Observed Band	44kD
Cell Pathway	Nucleus . Cytoplasm .
Tissue Specificity	Ubiquitous.
Function	function:May be a transcription factor required for the apoptosis response following survival factor withdrawal from myeloid cells. Might also have a role in the development and maturation of lymphoid cells.,similarity:Belongs to the requiem/DPF family.,similarity:Contains 1 C2H2-type zinc finger.,similarity:Contains 2 PHD-type zinc fingers.,subcellular location:30% nuclear. 70% cytoplasmic.,tissue specificity:Ubiquitous.,

Nanjing BYabscience technology Co.,Ltd



Background

The protein encoded by this gene is a member of the d4 domain family, characterized by a zinc finger-like structural motif. This protein functions as a transcription factor which is necessary for the apoptotic response following deprivation of survival factors. It likely serves a regulatory role in rapid hematopoietic cell growth and turnover. This gene is considered a candidate gene for multiple endocrine neoplasia type I, an inherited cancer syndrome involving multiple parathyroid, enteropancreatic, and pituitary tumors. [provided by RefSeq, Jul 2008],

matters needing attention

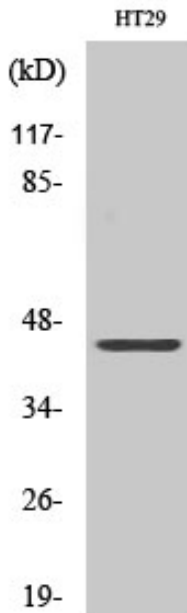
Avoid repeated freezing and thawing!

Usage suggestions

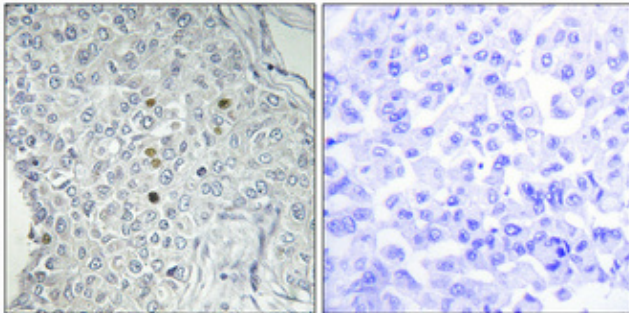
This product can be used in immunological reaction related experiments. For more information, please consult technical personnel.



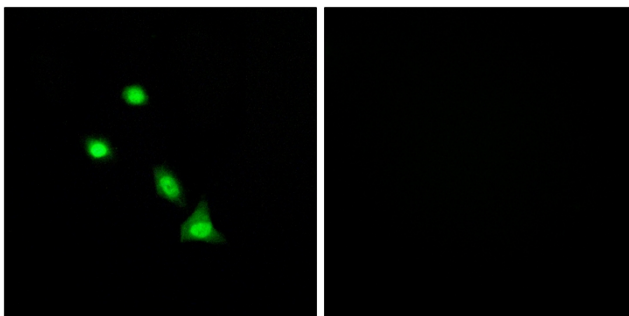
Products Images



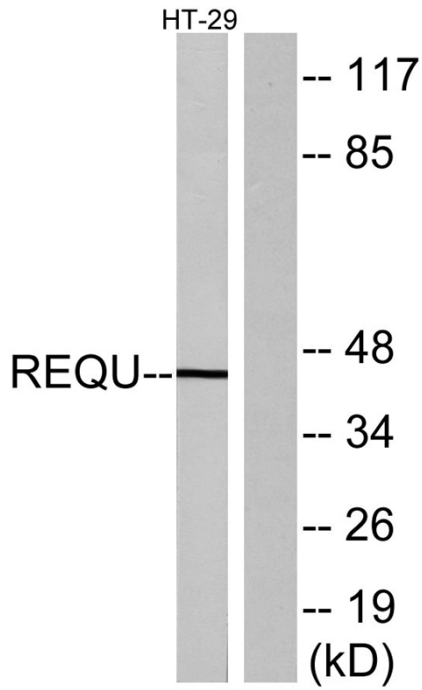
Western Blot analysis of various cells using DPF2 Polyclonal Antibody



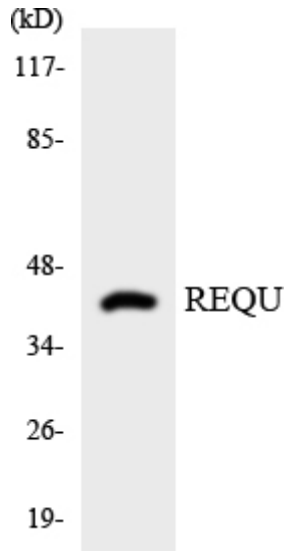
Immunohistochemical analysis of paraffin-embedded Human breast cancer. Antibody was diluted at 1:100(4° overnight). High-pressure and temperature Tris-EDTA, pH8.0 was used for antigen retrieval. Negative control (right) obtained from antibody was pre-absorbed by immunogen peptide.



Immunofluorescence analysis of A549 cells, using REQU Antibody. The picture on the right is blocked with the synthesized peptide.



Western blot analysis of lysates from HT-29 cells, using REQU Antibody. The lane on the right is blocked with the synthesized peptide.



Western blot analysis of the lysates from RAW264.7 cells using REQU antibody.