



Dorfin Polyclonal Antibody

Catalog No	BYab-01666
Isotype	IgG
Reactivity	Human;Mouse
Applications	WB;ELISA
Gene Name	RNF19A
Protein Name	E3 ubiquitin-protein ligase RNF19A
Immunogen	The antiserum was produced against synthesized peptide derived from human RNF19A. AA range:51-100
Specificity	Dorfin Polyclonal Antibody detects endogenous levels of Dorfin protein.
Formulation	Liquid in PBS containing 50% glycerol, 0.5% BSA and 0.02% sodium azide.
Source	Polyclonal, Rabbit,IgG
Purification	The antibody was affinity-purified from rabbit antiserum by affinity-chromatography using epitope-specific immunogen.
Dilution	Western Blot: 1/500 - 1/2000. ELISA: 1/40000. Not yet tested in other applications.
Concentration	1 mg/ml
Purity	≥90%
Storage Stability	-20°C/1 year
Synonyms	RNF19A; RNF19; E3 ubiquitin-protein ligase RNF19A; Double ring-finger protein; Dorfin; RING finger protein 19A; p38
Observed Band	90kD
Cell Pathway	Membrane ; Multi-pass membrane protein . Cytoplasm, cytoskeleton, microtubule organizing center, centrosome . Present in the hyaline inclusion bodies specifically found in motor neurons from amyotrophic lateral sclerosis patients. Present in the Lewy bodies specifically found in neurons from Parkinson disease patients.
Tissue Specificity	Widely expressed, with highest levels in heart. Ubiquitously expressed in the central nervous system.
Function	function:E3 ubiquitin-protein ligase which accepts ubiquitin from E2 ubiquitin-conjugating enzymes UBE2L3 and UBE2L6 in the form of a thioester and then directly transfers the ubiquitin to targeted substrates, such as SNCAIP or CASR. Specifically ubiquitinates pathogenic SOD1 variants, which leads to their proteasomal degradation and to neuronal protection..pathway:Protein modification; protein ubiquitination..PTM:Phosphorylated upon DNA damage, probably by ATM or ATR..similarity:Belongs to the RBR family. RNF19

Nanjing BYabscience technology Co.,Ltd



subfamily.,similarity:Contains 1 IBR-type zinc finger.,similarity:Contains 2 RING-type zinc fingers.,subcellular location:Present in the hyaline inclusion bodies specifically found in motor neurons from amyotrophic lateral sclerosis patients. Present in the Lewy bodies specifically found in neurons from Parkinson disease patients.,subunit:Interacts with UBE2L3 and UBE2L6. Interac

Background

This gene encodes a member of the ring between ring fingers (RBR) protein family, and the encoded protein contains two RING-finger motifs and an in between RING fingers motif. This protein is an E3 ubiquitin ligase that is localized to Lewy bodies, and ubiquitylates synphilin-1, which is an interacting protein of alpha synuclein in neurons. The encoded protein may be involved in amyotrophic lateral sclerosis and Parkinson's disease. Alternative splicing results in multiple transcript variants. [provided by RefSeq, Jul 2013],

matters needing attention

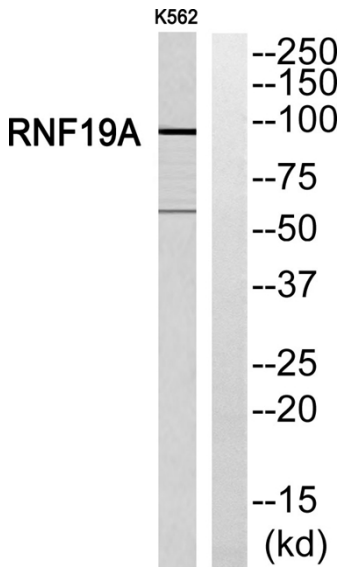
Avoid repeated freezing and thawing!

Usage suggestions

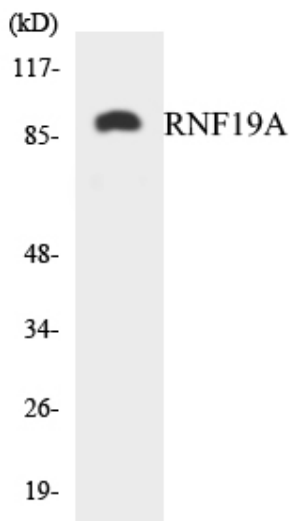
This product can be used in immunological reaction related experiments. For more information, please consult technical personnel.



Products Images



Western blot analysis of RNF19A Antibody. The lane on the right is blocked with the RNF19A peptide.



Western blot analysis of the lysates from Jurkat cells using RNF19A antibody.