



# DNA pol $\zeta$ Polyclonal Antibody

<b>Catalog No</b>	BYab-01661
<b>Isotype</b>	IgG
<b>Reactivity</b>	Human;Mouse
<b>Applications</b>	IHC;IF;ELISA
<b>Gene Name</b>	REV3L
<b>Protein Name</b>	DNA polymerase zeta catalytic subunit
<b>Immunogen</b>	The antiserum was produced against synthesized peptide derived from human DNA Polymerase zeta. AA range:231-280
<b>Specificity</b>	DNA pol $\zeta$ Polyclonal Antibody detects endogenous levels of DNA pol $\zeta$ protein.
<b>Formulation</b>	Liquid in PBS containing 50% glycerol, 0.5% BSA and 0.02% sodium azide.
<b>Source</b>	Polyclonal, Rabbit,IgG
<b>Purification</b>	The antibody was affinity-purified from rabbit antiserum by affinity-chromatography using epitope-specific immunogen.
<b>Dilution</b>	IHC: 1/100 - 1/300. ELISA: 1/20000.. IF 1:50-200
<b>Concentration</b>	1 mg/ml
<b>Purity</b>	≥90%
<b>Storage Stability</b>	-20°C/1 year
<b>Synonyms</b>	REV3L; POLZ; REV3; DNA polymerase zeta catalytic subunit; Protein reversionless 3-like; REV3-like; hREV3
<b>Observed Band</b>	
<b>Cell Pathway</b>	Nucleus .
<b>Tissue Specificity</b>	Ubiquitously expressed.
<b>Function</b>	catalytic activity:Deoxynucleoside triphosphate + DNA(n) = diphosphate + DNA(n+1).,domain:Its C-terminal part could serve as the catalytic domain during nucleotide polymerization, while its N-terminal part could provide sites for protein-protein interactions with other factors during translesion DNA synthesis.,similarity:Belongs to the DNA polymerase type-B family.,subunit:Interacts with REV7.,tissue specificity:Ubiquitously expressed.,
<b>Background</b>	catalytic activity:Deoxynucleoside triphosphate + DNA(n) = diphosphate + DNA(n+1).,domain:Its C-terminal part could serve as the catalytic domain during nucleotide polymerization, while its N-terminal part could provide sites for protein-protein interactions with other factors during translesion DNA

Nanjing BYabscience technology Co.,Ltd



synthesis.,similarity:Belongs to the DNA polymerase type-B family.,subunit:Interacts with REV7.,tissue specificity:Ubiquitously expressed.,

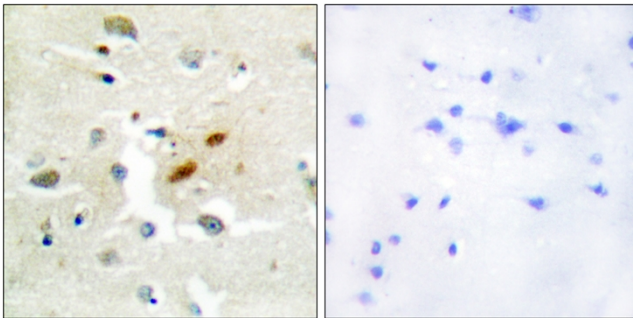
**matters needing attention**

Avoid repeated freezing and thawing!

**Usage suggestions**

This product can be used in immunological reaction related experiments. For more information, please consult technical personnel.

## Products Images



Immunohistochemistry analysis of paraffin-embedded human brain tissue, using DNA Polymerase zeta Antibody. The picture on the right is blocked with the synthesized peptide.