



DNA pol ϵ A Polyclonal Antibody

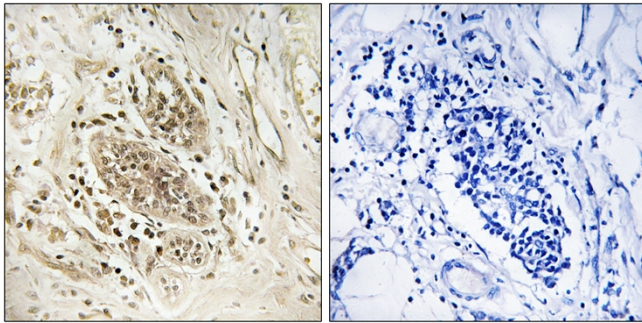
Catalog No	BYab-01660
Isotype	IgG
Reactivity	Human;Rat
Applications	IHC;IF;ELISA
Gene Name	POLE
Protein Name	DNA polymerase epsilon catalytic subunit A
Immunogen	The antiserum was produced against synthesized peptide derived from human POLE1. AA range:1261-1310
Specificity	DNA pol ϵ A Polyclonal Antibody detects endogenous levels of DNA pol ϵ A protein.
Formulation	Liquid in PBS containing 50% glycerol, 0.5% BSA and 0.02% sodium azide.
Source	Polyclonal, Rabbit,IgG
Purification	The antibody was affinity-purified from rabbit antiserum by affinity-chromatography using epitope-specific immunogen.
Dilution	IHC: 1/100 - 1/300. ELISA: 1/40000.. IF 1:50-200
Concentration	1 mg/ml
Purity	$\geq 90\%$
Storage Stability	-20°C/1 year
Synonyms	POLE; POLE1; DNA polymerase epsilon catalytic subunit A; DNA polymerase II subunit A
Observed Band	
Cell Pathway	Nucleus.
Tissue Specificity	Aorta endothelial cell,Colon,Kidney,Lung,T-cell,Testis,
Function	catalytic activity:Deoxynucleoside triphosphate + DNA(n) = diphosphate + DNA(n+1).,domain:The DNA polymerase activity domain resides in the N-terminal half of the protein, while the C-terminus is necessary for complexing subunits B and C. The C-terminus may also regulate the catalytic activities of the enzyme.,function:Participates in DNA repair and in chromosomal DNA replication.,PTM:Phosphorylated upon DNA damage, probably by ATM or ATR.,similarity:Belongs to the DNA polymerase type-B family.,subunit:Consists of two subunits (258 kDa and 55 kDa). Interacts with RAD17 and TOPBP1.,

Nanjing BYabscience technology Co.,Ltd



Background	DNA polymerase epsilon, catalytic subunit(POLE) Homo sapiens This gene encodes the catalytic subunit of DNA polymerase epsilon. The enzyme is involved in DNA repair and chromosomal DNA replication. Mutations in this gene have been associated with colorectal cancer 12 and facial dysmorphism, immunodeficiency, livedo, and short stature. [provided by RefSeq, Sep 2013],
matters needing attention	Avoid repeated freezing and thawing!
Usage suggestions	This product can be used in immunological reaction related experiments. For more information, please consult technical personnel.

Products Images



Immunohistochemistry analysis of paraffin-embedded human breast carcinoma tissue, using POLE1 Antibody. The picture on the right is blocked with the synthesized peptide.