



DNA pol ϵ 4 Polyclonal Antibody

Catalog No	BYab-01659
Isotype	IgG
Reactivity	Human;Mouse
Applications	IHC;IF;ELISA
Gene Name	POLE4
Protein Name	DNA polymerase epsilon subunit 4
Immunogen	The antiserum was produced against synthesized peptide derived from human POLE4. AA range:61-110
Specificity	DNA pol ϵ 4 Polyclonal Antibody detects endogenous levels of DNA pol ϵ 4 protein.
Formulation	Liquid in PBS containing 50% glycerol, 0.5% BSA and 0.02% sodium azide.
Source	Polyclonal, Rabbit,IgG
Purification	The antibody was affinity-purified from rabbit antiserum by affinity-chromatography using epitope-specific immunogen.
Dilution	IHC: 1/100 - 1/300. ELISA: 1/40000.. IF 1:50-200
Concentration	1 mg/ml
Purity	$\geq 90\%$
Storage Stability	-20°C/1 year
Synonyms	POLE4; DNA polymerase epsilon subunit 4; DNA polymerase II subunit 4; DNA polymerase epsilon subunit p12
Observed Band	12kD
Cell Pathway	Nucleus .
Tissue Specificity	Cervix carcinoma, Skin,
Function	catalytic activity:Deoxynucleoside triphosphate + DNA(n) = diphosphate + DNA(n+1).,function:May play a role in allowing polymerase epsilon to carry out its replication and/or repair function.,PTM:Phosphorylated upon DNA damage, probably by ATM or ATR.,subunit:Consists of four subunits: POLE1, POLE2, POLE3 and POLE4. Interacts with POLE3. When bound to POLE3, it can associate with polymerase epsilon p261 and p59 and form a complex.,
Background	POLE4 is a histone-fold protein that interacts with other histone-fold proteins to bind DNA in a sequence-independent manner. These histone-fold protein dimers combine within larger enzymatic complexes for DNA transcription, replication, and

Nanjing BYabscience technology Co.,Ltd



packaging.[supplied by OMIM, Apr 2004],

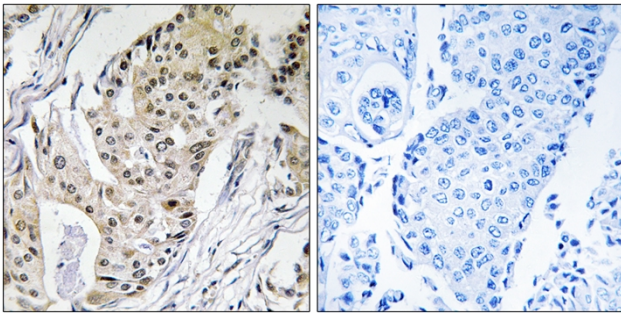
matters needing attention

Avoid repeated freezing and thawing!

Usage suggestions

This product can be used in immunological reaction related experiments. For more information, please consult technical personnel.

Products Images



Immunohistochemistry analysis of paraffin-embedded human breast carcinoma tissue, using POLE4 Antibody. The picture on the right is blocked with the synthesized peptide.