



DHHC-15 Polyclonal Antibody

| | |
|---------------------------|---|
| Catalog No | BYab-01651 |
| Isotype | IgG |
| Reactivity | Human;Rat;Mouse; |
| Applications | WB;ELISA |
| Gene Name | ZDHHC15 |
| Protein Name | Palmitoyltransferase ZDHHC15 |
| Immunogen | The antiserum was produced against synthesized peptide derived from human ZDHHC15. AA range:288-337 |
| Specificity | DHHC-15 Polyclonal Antibody detects endogenous levels of DHHC-15 protein. |
| Formulation | Liquid in PBS containing 50% glycerol, 0.5% BSA and 0.02% sodium azide. |
| Source | Polyclonal, Rabbit,IgG |
| Purification | The antibody was affinity-purified from rabbit antiserum by affinity-chromatography using epitope-specific immunogen. |
| Dilution | Western Blot: 1/500 - 1/2000. ELISA: 1/10000. Not yet tested in other applications. |
| Concentration | 1 mg/ml |
| Purity | ≥90% |
| Storage Stability | -20°C/1 year |
| Synonyms | ZDHHC15; Palmitoyltransferase ZDHHC15; Zinc finger DHHC domain-containing protein 15; DHHC-15 |
| Observed Band | 38kD |
| Cell Pathway | Golgi apparatus membrane ; Multi-pass membrane protein . Cell junction, synapse, postsynaptic density . |
| Tissue Specificity | Expressed in placenta, liver, lung, kidney, heart and brain. |
| Function | catalytic activity:Palmitoyl-CoA + protein-cysteine = S-palmitoyl protein + CoA.,disease:Defects in ZDHHC15 are the cause of mental retardation X-linked type 91 (MRX91) [MIM:300577]. Mental retardation is characterized by significantly sub-average general intellectual functioning associated with impairments in adaptative behavior and manifested during the developmental period. Non-syndromic mental retardation patients do not manifest other clinical signs.,domain:The DHHC domain is required for palmitoyltransferase activity.,function:Palmitoyltransferase specific for GAP43 and DLG4/PSD95.,PTM:Autopalmitoylated.,similarity:Belongs to the DHHC palmitoyltransferase family.,similarity:Contains 1 DHHC-type zinc finger.,tissue |

Nanjing BYabscience technology Co.,Ltd



specificity: Expressed in placenta, liver, lung, kidney, heart and brain.,

Background

The protein encoded by this gene belongs to the DHHC palmitoyltransferase family. Mutations in this gene are associated with mental retardatio X-linked type 91 (MRX91). Alternatively spliced transcript variants encoding different isoforms have been found for this gene. [provided by RefSeq, Sep 2009],

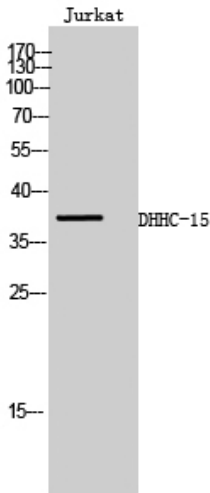
matters needing attention

Avoid repeated freezing and thawing!

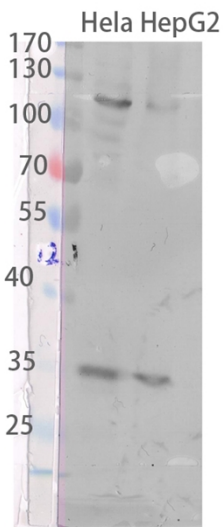
Usage suggestions

This product can be used in immunological reaction related experiments. For more information, please consult technical personnel.

Products Images

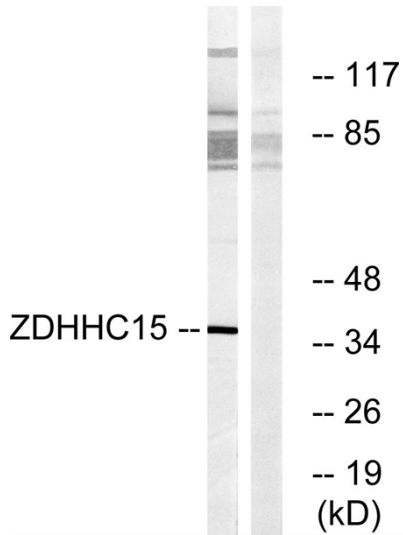


Western Blot analysis of Jurkat cells using DHHC-15 Polyclonal Antibody

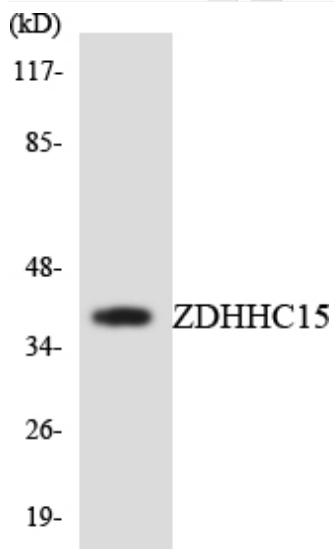


The picture was kindly provided by our customer, antibody was diluted at 1:500

Nanjing BYabscience technology Co.,Ltd



Western blot analysis of lysates from Jurkat cells, using ZDHHC15 Antibody. The lane on the right is blocked with the synthesized peptide.



Western blot analysis of the lysates from 293 cells using ZDHHC15 antibody.