



# DEC2 Polyclonal Antibody

<b>Catalog No</b>	BYab-01649
<b>Isotype</b>	IgG
<b>Reactivity</b>	Human;Mouse;Rat
<b>Applications</b>	WB;IHC;IF;ELISA
<b>Gene Name</b>	BHLHE41
<b>Protein Name</b>	Class E basic helix-loop-helix protein 41
<b>Immunogen</b>	The antiserum was produced against synthesized peptide derived from human BHLHB3. AA range:1-50
<b>Specificity</b>	DEC2 Polyclonal Antibody detects endogenous levels of 40879 protein.
<b>Formulation</b>	Liquid in PBS containing 50% glycerol, 0.5% BSA and 0.02% sodium azide.
<b>Source</b>	Polyclonal, Rabbit,IgG
<b>Purification</b>	The antibody was affinity-purified from rabbit antiserum by affinity-chromatography using epitope-specific immunogen.
<b>Dilution</b>	WB: 1/500 - 1/2000. IHC: 1/100 - 1/300. ELISA: 1/40000.. IF 1:50-200
<b>Concentration</b>	1 mg/ml
<b>Purity</b>	≥90%
<b>Storage Stability</b>	-20°C/1 year
<b>Synonyms</b>	BHLHE41; BHLHB3; DEC2; SHARP1; Class E basic helix-loop-helix protein 41; bHLHe41; Class B basic helix-loop-helix protein 3; bHLHb3; Differentially expressed in chondrocytes protein 2; hDEC2; Enhancer-of-split and hairy-related protein 1; S
<b>Observed Band</b>	50kD
<b>Cell Pathway</b>	Nucleus .
<b>Tissue Specificity</b>	Highly expressed in skeletal muscle and brain, moderately expressed in pancreas and heart, weakly expressed in placenta, lung, liver and kidney.
<b>Function</b>	function:May be a transcriptional repressor that represses both basal and activated transcription.,similarity:Contains 1 basic helix-loop-helix (bHLH) domain.,similarity:Contains 1 Orange domain.,subunit:Homodimerize.,tissue specificity:Highly expressed in skeletal muscle and brain, moderately expressed in pancreas and heart, weakly expressed in placenta, lung, liver and kidney.,

Nanjing BYabscience technology Co.,Ltd



### Background

This gene encodes a basic helix-loop-helix protein expressed in various tissues. The encoded protein can interact with ARNTL or compete for E-box binding sites in the promoter of PER1 and repress CLOCK/ARNTL's transactivation of PER1. This gene is believed to be involved in the control of circadian rhythm and cell differentiation. Defects in this gene are associated with the short sleep phenotype. [provided by RefSeq, Feb 2014],

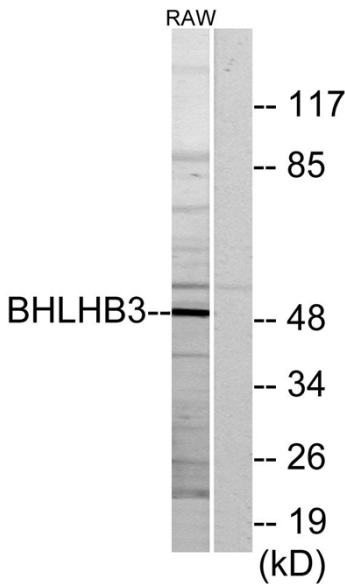
### matters needing attention

Avoid repeated freezing and thawing!

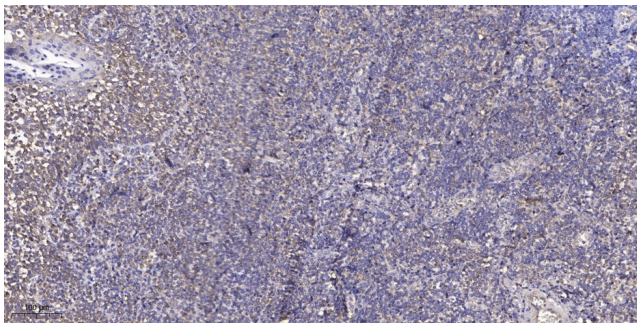
### Usage suggestions

This product can be used in immunological reaction related experiments. For more information, please consult technical personnel.

## Products Images



Western blot analysis of lysates from RAW264.7 cells, using BHLHB3 Antibody. The lane on the right is blocked with the synthesized peptide.



Immunohistochemical analysis of paraffin-embedded human tonsil. 1, Antibody was diluted at 1:200(4° overnight). 2, Tris-EDTA,pH9.0 was used for antigen retrieval. 3,Secondary antibody was diluted at 1:200(room temperature, 45min).

Nanjing BYabscience technology Co.,Ltd