



DDX52 Polyclonal Antibody

Catalog No	BYab-01645
Isotype	IgG
Reactivity	Human;Rat;Mouse;
Applications	WB;IHC;IF;ELISA
Gene Name	DDX52
Protein Name	Probable ATP-dependent RNA helicase DDX52
Immunogen	The antiserum was produced against synthesized peptide derived from human DDX52. AA range:550-599
Specificity	DDX52 Polyclonal Antibody detects endogenous levels of DDX52 protein.
Formulation	Liquid in PBS containing 50% glycerol, 0.5% BSA and 0.02% sodium azide.
Source	Polyclonal, Rabbit,IgG
Purification	The antibody was affinity-purified from rabbit antiserum by affinity-chromatography using epitope-specific immunogen.
Dilution	WB: 1/500 - 1/2000. IHC: 1/100 - 1/300. ELISA: 1/40000.. IF 1:50-200
Concentration	1 mg/ml
Purity	≥90%
Storage Stability	-20°C/1 year
Synonyms	DDX52; ROK1; HUSSY-19; Probable ATP-dependent RNA helicase DDX52; ATP-dependent RNA helicase ROK1-like; DEAD box protein 52
Observed Band	67kD
Cell Pathway	Nucleus, nucleolus .
Tissue Specificity	Brain,Liver,Prostate,Spleen,Teratocarcinoma,Thymus,
Function	caution:The sequence shown here is derived from an Ensembl automatic analysis pipeline and should be considered as preliminary data.,PTM:Phosphorylated upon DNA damage, probably by ATM or ATR.,sequence caution:Several sequencing problems.,similarity:Belongs to the DEAD box helicase family. DDX52/ROK1 subfamily.,similarity:Contains 1 helicase ATP-binding domain.,similarity:Contains 1 helicase C-terminal domain.,
Background	caution:The sequence shown here is derived from an Ensembl automatic analysis pipeline and should be considered as preliminary data.,PTM:Phosphorylated upon DNA damage, probably by ATM or ATR.,sequence caution:Several sequencing problems.,similarity:Belongs to the DEAD box helicase family. DDX52/ROK1

Nanjing BYabscience technology Co.,Ltd



subfamily.,similarity:Contains 1 helicase ATP-binding domain.,similarity:Contains 1 helicase C-terminal domain.,

matters needing attention

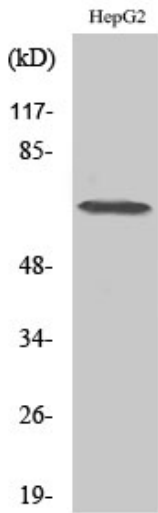
Avoid repeated freezing and thawing!

Usage suggestions

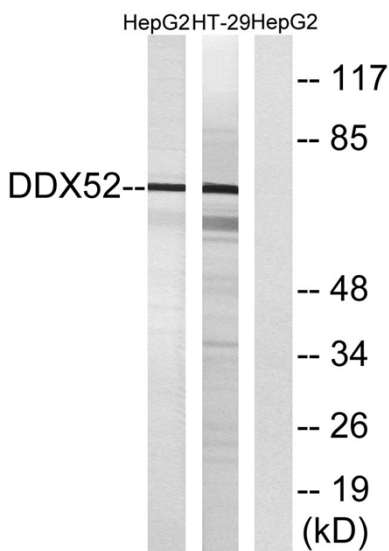
This product can be used in immunological reaction related experiments. For more information, please consult technical personnel.



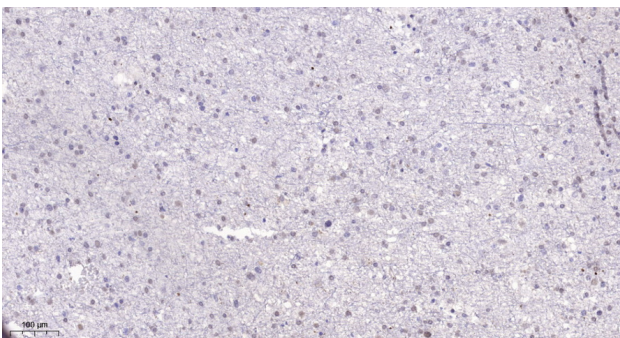
Products Images



Western Blot analysis of various cells using DDX52 Polyclonal Antibody diluted at 1:500 cells nucleus extracted by Minute TM Cytoplasmic and Nuclear Fractionation kit (SC-003, Inventbiotech, MN, USA).



Western blot analysis of lysates from HepG2 and HT-29 cells, using DDX52 Antibody. The lane on the right is blocked with the synthesized peptide.



Immunohistochemical analysis of paraffin-embedded human brain. 1, Tris-EDTA, pH9.0 was used for antigen retrieval. 2 Antibody was diluted at 1:200(4° overnight). 3, Secondary antibody was diluted at 1:200(room temperature, 45min).

Nanjing BYabscience technology Co.,Ltd