



DDX3 Polyclonal Antibody

Catalog No	BYab-01641
Isotype	IgG
Reactivity	Human;Mouse;Rat
Applications	WB;IHC;IF;ELISA
Gene Name	DDX3X
Protein Name	ATP-dependent RNA helicase DDX3X
Immunogen	The antiserum was produced against synthesized peptide derived from human DDX3/DEAD-box Protein 3. AA range:466-515
Specificity	DDX3 Polyclonal Antibody detects endogenous levels of DDX3 protein.
Formulation	Liquid in PBS containing 50% glycerol, 0.5% BSA and 0.02% sodium azide.
Source	Polyclonal, Rabbit,IgG
Purification	The antibody was affinity-purified from rabbit antiserum by affinity-chromatography using epitope-specific immunogen.
Dilution	WB: 1/500 - 1/2000. IHC: 1/100 - 1/300. ELISA: 1/10000.. IF 1:50-200
Concentration	1 mg/ml
Purity	≥90%
Storage Stability	-20°C/1 year
Synonyms	DDX3X; DBX; DDX3; ATP-dependent RNA helicase DDX3X; DEAD box protein 3; X-chromosomal; DEAD box, X isoform; Helicase-like protein 2; HLP2
Observed Band	73kD
Cell Pathway	Cell membrane . Nucleus . Cytoplasm . Cytoplasm, Stress granule . Inflammasome . Cell projection, lamellipodium . Cytoplasm, cytoskeleton, microtubule organizing center, centrosome . Shuttles between the nucleus and the cytosol (PubMed:15507209, PubMed:18636090, PubMed:29899501, PubMed:31575075, PubMed:30131165). Exported from the nucleus partly through the XPO1/CRM1 system and partly through NXF1/TAP (PubMed:15507209, PubMed:18636090, PubMed:18596238, PubMed:31575075, PubMed:30131165). Localizes to nuclear pores on the outer side of the nuclear membrane (PubMed:15507209). In the cytosol, partly localizes with mitochondria (PubMed:20127681). At G0, predominantly located in nucleus. In G1/S phase, predominantly cytoplasmic (PubMed:22034099). During prophase/prometaphase, localizes in clos
Tissue Specificity	Widely expressed (PubMed:15294876). In testis, expressed in spermatids (PubMed:15294876). Expressed in epidermis and liver (at protein level)

Nanjing BYabscience technology Co.,Ltd



(PubMed:16818630, PubMed:16301996).

Function

function:ATP-dependent RNA helicase. Acts as a cofactor for XPO1-mediated nuclear export of incompletely spliced HIV-1 Rev RNAs. Also involved in HIV-1 replication. Interacts specifically with hepatitis C virus core protein resulting in a change in intracellular location.,similarity:Belongs to the DEAD box helicase family.,similarity:Belongs to the DEAD box helicase family. DDX3/DED1 subfamily.,similarity:Contains 1 helicase ATP-binding domain.,similarity:Contains 1 helicase C-terminal domain.,subcellular location:Located predominantly in nuclear speckles and, at low levels, throughout the cytoplasm. Located to the outer side of nuclear pore complexes (NPC). Shuttles between the nucleus and the cytoplasm in a XPO1-dependent manner.,subunit:Found in a complex with Rev and XPO1. Interacts with XPO1 and TDRD3. Interacts with HCV core protein.,

Background

The protein encoded by this gene is a member of the large DEAD-box protein family, that is defined by the presence of the conserved Asp-Glu-Ala-Asp (DEAD) motif, and has ATP-dependent RNA helicase activity. This protein has been reported to display a high level of RNA-independent ATPase activity, and unlike most DEAD-box helicases, the ATPase activity is thought to be stimulated by both RNA and DNA. This protein has multiple conserved domains and is thought to play roles in both the nucleus and cytoplasm. Nuclear roles include transcriptional regulation, mRNP assembly, pre-mRNA splicing, and mRNA export. In the cytoplasm, this protein is thought to be involved in translation, cellular signaling, and viral replication. Misregulation of this gene has been implicated in tumorigenesis. This gene has a paralog located in the nonrecombining region of the Y chromosome. Pseudogenes sharing similarit

matters needing attention

Avoid repeated freezing and thawing!

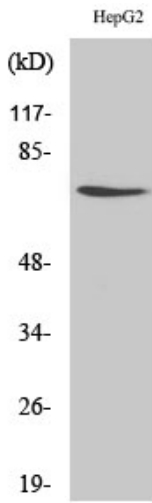
Usage suggestions

This product can be used in immunological reaction related experiments. For more information, please consult technical personnel.

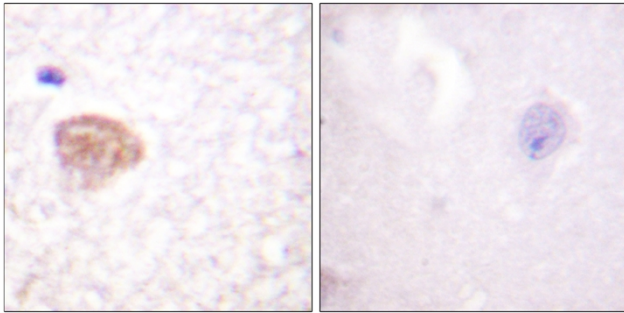
Nanjing BYabscience technology Co.,Ltd



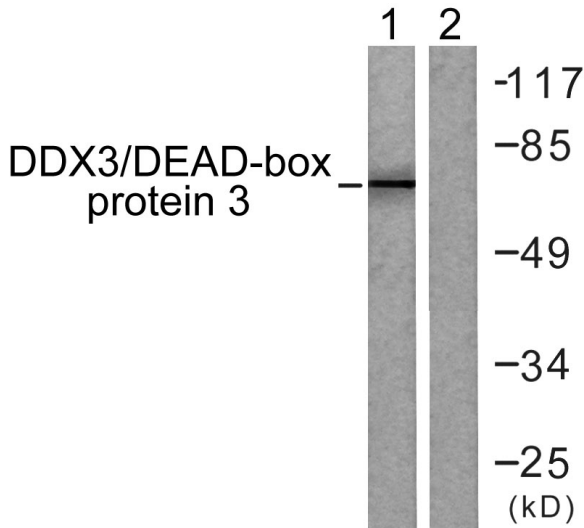
Products Images



Western Blot analysis of various cells using DDX3 Polyclonal Antibody



Immunohistochemistry analysis of paraffin-embedded human brain tissue, using DDX3/DEAD-box Protein 3 Antibody. The picture on the right is blocked with the synthesized peptide.



Western blot analysis of lysates from HepG2 cells, using DDX3/DEAD-box Protein 3 Antibody. The lane on the right is blocked with the synthesized peptide.