



CtBP1 Polyclonal Antibody

Catalog No	BYab-01633
Isotype	IgG
Reactivity	Human;Mouse;Rat
Applications	WB;IHC;IF;ELISA
Gene Name	CTBP1
Protein Name	C-terminal-binding protein 1
Immunogen	The antiserum was produced against synthesized peptide derived from human CtBP1. AA range:388-437
Specificity	CtBP1 Polyclonal Antibody detects endogenous levels of CtBP1 protein.
Formulation	Liquid in PBS containing 50% glycerol, 0.5% BSA and 0.02% sodium azide.
Source	Polyclonal, Rabbit,IgG
Purification	The antibody was affinity-purified from rabbit antiserum by affinity-chromatography using epitope-specific immunogen.
Dilution	WB: 1/500 - 1/2000. IHC: 1/100 - 1/300. ELISA: 1/20000.. IF 1:50-200
Concentration	1 mg/ml
Purity	≥90%
Storage Stability	-20°C/1 year
Synonyms	CTBP1; CTBP; C-terminal-binding protein 1; CtBP1
Observed Band	48kD
Cell Pathway	Cytoplasm . Nucleus .
Tissue Specificity	Expressed in germinal center B-cells.
Function	cofactor:NAD. Required for efficient interaction with E1A. Cofactor binding induces a conformation change.,function:Involved in controlling the equilibrium between tubular and stacked structures in the Golgi complex (By similarity). Co-repressor targeting diverse transcription regulators such as GLIS2. Has dehydrogenase activity.,PTM:ADP-ribosylated; when cells are exposed to brefeldin-A (BFA).,PTM:Sumoylation on Lys-428 is promoted by the E3 SUMO-protein ligase CBX4.,PTM:The level of phosphorylation appears to be regulated during the cell cycle. Phosphorylated upon DNA damage, probably by ATM or ATR. Phosphorylation by HIPK2 on Ser-422 induces proteasomal degradation.,similarity:Belongs to the D-isomer specific 2-hydroxyacid dehydrogenase family.,subunit:Interacts with the C-terminus of adenovirus E1A

Nanjing BYabscience technology Co.,Ltd



protein, ELK3 and CTIP via their consensus motif P-X-[DNS]-L-[STVA]. Can form homodimer

Background

This gene encodes a protein that binds to the C-terminus of adenovirus E1A proteins. This phosphoprotein is a transcriptional repressor and may play a role during cellular proliferation. This protein and the product of a second closely related gene, CTBP2, can dimerize. Both proteins can also interact with a polycomb group protein complex which participates in regulation of gene expression during development. Alternative splicing of transcripts from this gene results in multiple transcript variants. [provided by RefSeq, Jul 2008],

matters needing attention

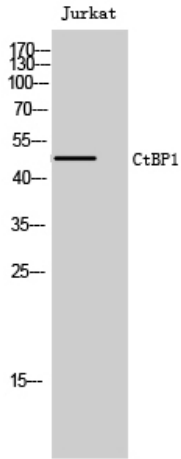
Avoid repeated freezing and thawing!

Usage suggestions

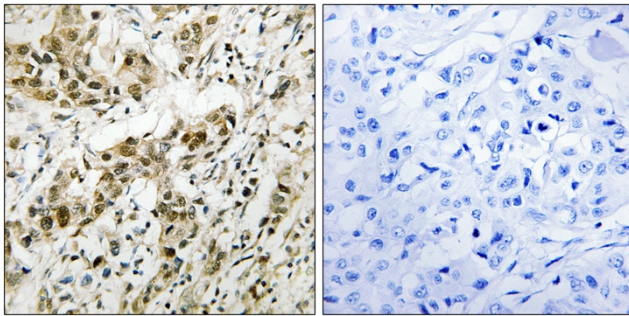
This product can be used in immunological reaction related experiments. For more information, please consult technical personnel.



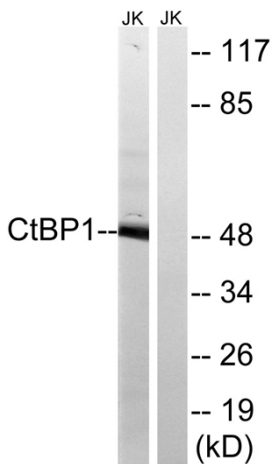
Products Images



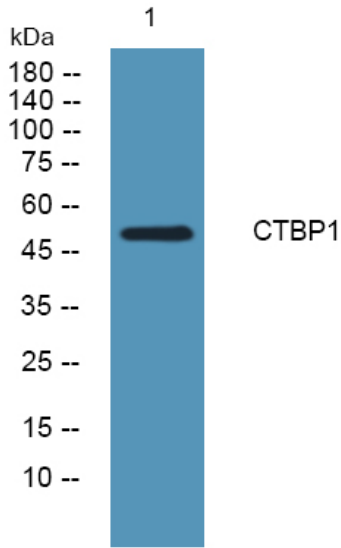
Western Blot analysis of Jurkat cells using CtBP1 Polyclonal Antibody



Immunohistochemistry analysis of paraffin-embedded human breast carcinoma tissue, using CtBP1 Antibody. The picture on the right is blocked with the synthesized peptide.



Western blot analysis of lysates from Jurkat cells, using CtBP1 Antibody. The lane on the right is blocked with the synthesized peptide.



Western blot analysis of lysates from SW480 cells,
primary antibody was diluted at 1:1000, 4° over night