



# CRP1 Polyclonal Antibody

<b>Catalog No</b>	BYab-01623
<b>Isotype</b>	IgG
<b>Reactivity</b>	Human;Mouse;Rat
<b>Applications</b>	WB;IHC;IF;ELISA
<b>Gene Name</b>	CSRP1
<b>Protein Name</b>	Cysteine and glycine-rich protein 1
<b>Immunogen</b>	The antiserum was produced against synthesized peptide derived from human CRP1. AA range:51-100
<b>Specificity</b>	CRP1 Polyclonal Antibody detects endogenous levels of CRP1 protein.
<b>Formulation</b>	Liquid in PBS containing 50% glycerol, 0.5% BSA and 0.02% sodium azide.
<b>Source</b>	Polyclonal, Rabbit,IgG
<b>Purification</b>	The antibody was affinity-purified from rabbit antiserum by affinity-chromatography using epitope-specific immunogen.
<b>Dilution</b>	WB: 1/500 - 1/2000. IHC: 1/100 - 1/300. ELISA: 1/20000.. IF 1:50-200
<b>Concentration</b>	1 mg/ml
<b>Purity</b>	≥90%
<b>Storage Stability</b>	-20°C/1 year
<b>Synonyms</b>	CSRP1; CSRP; CYRP; Cysteine and glycine-rich protein 1; Cysteine-rich protein 1; CRP; CRP1
<b>Observed Band</b>	22kD
<b>Cell Pathway</b>	Nucleus .
<b>Tissue Specificity</b>	Amygdala,Brain,Cervix,Epithelium,Pancreas,Term placenta,Trachea,Ute
<b>Function</b>	function:Could play a role in neuronal development.,similarity:Contains 1 LIM zinc-binding domain.,similarity:Contains 2 LIM zinc-binding domains.,subunit:Monomer.,
<b>Background</b>	This gene encodes a member of the cysteine-rich protein (CSRP) family. This gene family includes a group of LIM domain proteins, which may be involved in regulatory processes important for development and cellular differentiation. The LIM/double zinc-finger motif found in this gene product occurs in proteins with critical functions in gene regulation, cell growth, and somatic differentiation. Alternatively spliced transcript variants have been described. [provided by RefSeq, Aug 2010],

Nanjing BYabscience technology Co.,Ltd



**matters needing attention**

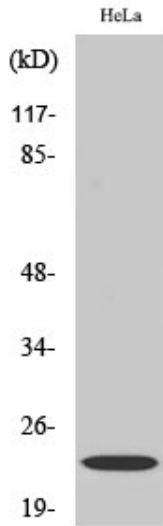
Avoid repeated freezing and thawing!

**Usage suggestions**

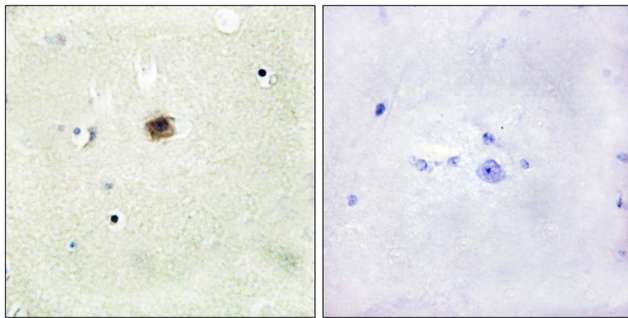
This product can be used in immunological reaction related experiments. For more information, please consult technical personnel.



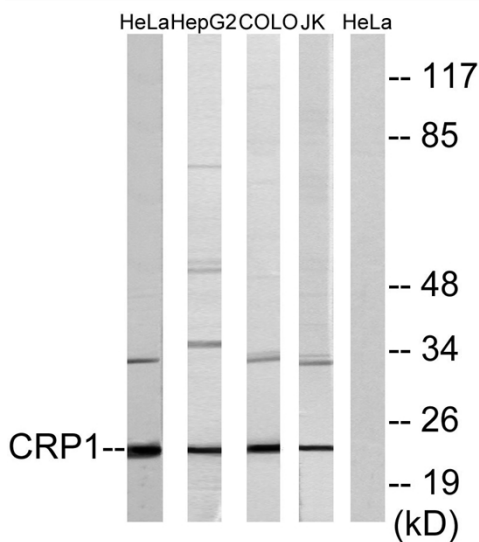
## Products Images



Western Blot analysis of various cells using CRP1 Polyclonal Antibody diluted at 1:1000 cells nucleus extracted by Minute TM Cytoplasmic and Nuclear Fractionation kit (SC-003, Inventbiotech, MN, USA).



Immunohistochemistry analysis of paraffin-embedded human brain tissue, using CRP1 Antibody. The picture on the right is blocked with the synthesized peptide.



Western blot analysis of lysates from HeLa, HepG2, COLO, and Jurkat cells, using CRP1 Antibody. The lane on the right is blocked with the synthesized peptide.

Nanjing BYabscience technology Co.,Ltd