



# CGGBP1 Polyclonal Antibody

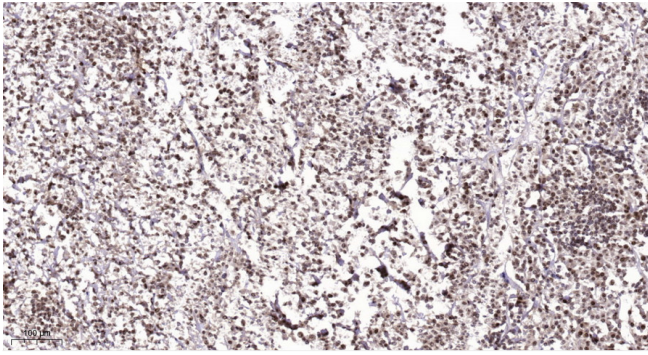
|                           |   |
|---------------------------|---|
| <b>Catalog No</b>         | BYab-01607  |
| <b>Isotype</b>            | IgG   |
| <b>Reactivity</b>         | Human;Mouse   |
| <b>Applications</b>       | IHC;IF;ELISA  |
| <b>Gene Name</b>          | CGGBP1  |
| <b>Protein Name</b>       | CGG triplet repeat-binding protein 1  |
| <b>Immunogen</b>          | The antiserum was produced against synthesized peptide derived from human CGGBP1. AA range:41-90  |
| <b>Specificity</b>        | CGGBP1 Polyclonal Antibody detects endogenous levels of CGGBP1 protein.   |
| <b>Formulation</b>        | Liquid in PBS containing 50% glycerol, 0.5% BSA and 0.02% sodium azide.   |
| <b>Source</b>             | Polyclonal, Rabbit,IgG  |
| <b>Purification</b>       | The antibody was affinity-purified from rabbit antiserum by affinity-chromatography using epitope-specific immunogen.   |
| <b>Dilution</b>           | IHC: 1/100 - 1/300. ELISA: 1/5000.. IF 1:50-200   |
| <b>Concentration</b>      | 1 mg/ml   |
| <b>Purity</b>             | ≥90%  |
| <b>Storage Stability</b>  | -20°C/1 year  |
| <b>Synonyms</b>           | CGGBP1; CGGBP; CGG triplet repeat-binding protein 1; CGG-binding protein 1; 20 kDa CGG-binding protein; p20-CGGBP DNA-binding protein   |
| <b>Observed Band</b>      |   |
| <b>Cell Pathway</b>       | Nucleus .   |
| <b>Tissue Specificity</b> | Ubiquitous. Highly expressed in placenta, thymus, lymph nodes, cerebellum and cerebral cortex. Low expression in other regions of the brain.  |
| <b>Function</b>           | developmental stage:Expressed in fetal brain and kidney. Lower expression in fetal liver and lung.,function:Binds to nonmethylated 5'-d(CGG)(n)-3' trinucleotide repeats in the FMR1 promoter. May play a role in regulating FMR1 promoter.,miscellaneous:Binding is severely inhibited by complete or partial cytosine-specific DNA methylation of the binding motif.,PTM:Phosphorylated upon DNA damage, probably by ATM or ATR.,tissue specificity:Ubiquitous. Highly expressed in placenta, thymus, lymph nodes, cerebellum and cerebral cortex. Low expression in other regions of the brain., |

Nanjing BYabscience technology Co.,Ltd



|                                  |  |
|----------------------------------|--|
| <b>Background</b>                | CGGBP1 influences expression of the FMR1 gene (MIM 309550), which is associated with the fragile X mental retardation syndrome (MIM 300624), by specifically interacting with the 5-prime (CGG) $n$ -3-prime repeat in its 5-prime UTR.[supplied by OMIM, Mar 2008], |
| <b>matters needing attention</b> | Avoid repeated freezing and thawing!   |
| <b>Usage suggestions</b>         | This product can be used in immunological reaction related experiments. For more information, please consult technical personnel.  |

## Products Images



Immunohistochemical analysis of paraffin-embedded human Colon cancer. 1, Antibody was diluted at 1:200(4° overnight). 2, Tris-EDTA,pH9.0 was used for antigen retrieval. 3,Secondary antibody was diluted at 1:200(room temperature, 45min).