



# CUX1 Polyclonal Antibody

<b>Catalog No</b>	BYab-01603
<b>Isotype</b>	IgG
<b>Reactivity</b>	Human;Mouse
<b>Applications</b>	WB;IHC;IF;ELISA
<b>Gene Name</b>	CUX1
<b>Protein Name</b>	Homeobox protein cut-like 1/Protein CASP
<b>Immunogen</b>	The antiserum was produced against synthesized peptide derived from human CUTL1. AA range:10-59
<b>Specificity</b>	CUX1 Polyclonal Antibody detects endogenous levels of CUX1 protein.
<b>Formulation</b>	Liquid in PBS containing 50% glycerol, 0.5% BSA and 0.02% sodium azide.
<b>Source</b>	Polyclonal, Rabbit,IgG
<b>Purification</b>	The antibody was affinity-purified from rabbit antiserum by affinity-chromatography using epitope-specific immunogen.
<b>Dilution</b>	Western Blot: 1/500 - 1/2000. Immunohistochemistry: 1/100 - 1/300. Immunofluorescence: 1/200 - 1/1000. ELISA: 1/40000. Not yet tested in other applications.
<b>Concentration</b>	1 mg/ml
<b>Purity</b>	≥90%
<b>Storage Stability</b>	-20°C/1 year
<b>Synonyms</b>	CUX1; CUTL1; Homeobox protein cut-like 1; CCAAT displacement protein; CDP; Homeobox protein cux-1; CUX1; CUTL1; Protein CASP
<b>Observed Band</b>	164kD
<b>Cell Pathway</b>	Nucleus .
<b>Tissue Specificity</b>	Colon,Duodenum,Liver,Umbilical vein,
<b>Function</b>	alternative products:Additional isoforms seem to exist,function:May be involved in intra-Golgi retrograde transport.,function:Probably has a broad role in mammalian development as a repressor of developmentally regulated gene expression. May act by preventing binding of positively-activating CCAAT factors to promoters. Component of nf-munr repressor; binds to the matrix attachment regions (MARs) (5' and 3') of the immunoglobulin heavy chain enhancer. Represses T-cell receptor (TCR) beta enhancer function by binding to MARbeta, an ATC-rich DNA sequence located upstream of the TCR beta enhancer.,miscellaneous:Asn-1290 may participate in regulating DNA-binding activity by promoting homo- and

**Nanjing BYabscience technology Co.,Ltd**



heterodimerization.,PTM:Phosphorylated upon DNA damage, probably by ATM or ATR.,similarity:Belongs to the CASP family.,similarity:Belongs to the CUT homeobox family.,similarity:Contains 1 homeobox DNA-bin

**Background**

The protein encoded by this gene is a member of the homeodomain family of DNA binding proteins. It may regulate gene expression, morphogenesis, and differentiation and it may also play a role in the cell cycle progression. Several alternatively spliced transcript variants encoding different isoforms have been identified.[provided by RefSeq, Feb 2011],

**matters needing attention**

Avoid repeated freezing and thawing!

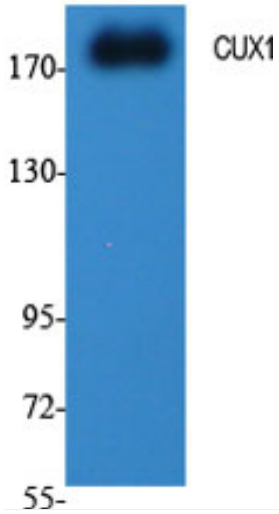
**Usage suggestions**

This product can be used in immunological reaction related experiments. For more information, please consult technical personnel.

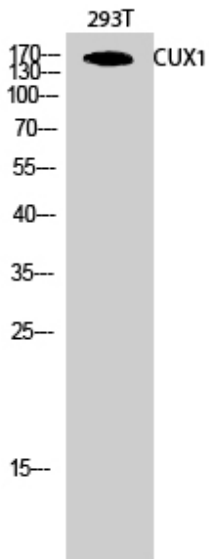


## Products Images

(kD)

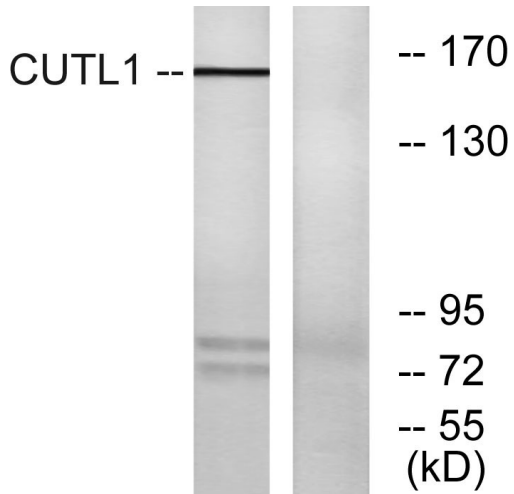


Western Blot analysis of various cells using CUX1 Polyclonal Antibody diluted at 1:1000

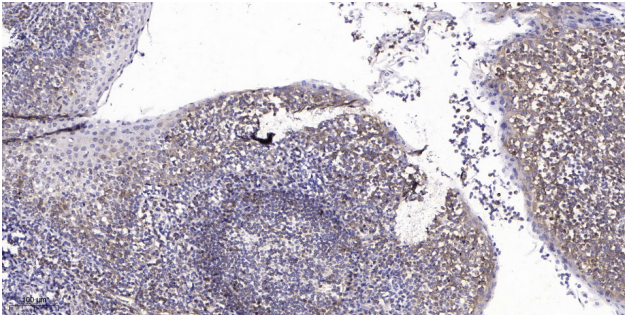


Western Blot analysis of 293T cells using CUX1 Polyclonal Antibody diluted at 1:1000

Nanjing BYabscience technology Co.,Ltd



Western blot analysis of lysates from K562 cells, using CUTL1 Antibody. The lane on the right is blocked with the synthesized peptide.



Immunohistochemical analysis of paraffin-embedded human tonsil. 1, Antibody was diluted at 1:200(4° overnight). 2, Tris-EDTA,pH9.0 was used for antigen retrieval. 3,Secondary antibody was diluted at 1:200(room temperature, 45min).