



CD3EAP Polyclonal Antibody

Catalog No	BYab-01600
Isotype	IgG
Reactivity	Human;Rat;Mouse;
Applications	WB;IHC;IF;ELISA
Gene Name	CD3EAP
Protein Name	DNA-directed RNA polymerase I subunit RPA34
Immunogen	The antiserum was produced against synthesized peptide derived from human CD3EAP. AA range:441-490
Specificity	CD3EAP Polyclonal Antibody detects endogenous levels of CD3EAP protein.
Formulation	Liquid in PBS containing 50% glycerol, 0.5% BSA and 0.02% sodium azide.
Source	Polyclonal, Rabbit,IgG
Purification	The antibody was affinity-purified from rabbit antiserum by affinity-chromatography using epitope-specific immunogen.
Dilution	WB: 1/500 - 1/2000. IHC: 1/100 - 1/300. ELISA: 1/40000.. IF 1:50-200
Concentration	1 mg/ml
Purity	≥90%
Storage Stability	-20°C/1 year
Synonyms	CD3EAP; ASE1; CAST; PAF49; DNA-directed RNA polymerase I subunit RPA34; A34.5; Antisense to ERCC-1 protein; ASE-1; CD3-epsilon-associated protein; CAST; CD3E-associated protein; RNA polymerase I-associated factor PAF49
Observed Band	55kD
Cell Pathway	Nucleus, nucleolus . Chromosome . Found at the fibrillar centers of the nucleolus in interphase and during cell division it is localized to the nucleolus organizer regions of the chromosomes.
Tissue Specificity	Eye,Serum,Skin,Testis,
Function	caution:It is not known whether the so-called human ASE1 and human CAST proteins represent two sides of a single gene product with sharply different functional characteristics. Experiments done with the mouse homolog protein are in favor of an implication of this gene in rRNA transcription instead of T-cell receptor signaling.,function:DNA-dependent RNA polymerase catalyzes the transcription of DNA into RNA using the four ribonucleoside triphosphates as substrates. Component of RNA polymerase I which synthesizes ribosomal RNA precursors. Isoform 1 is involved in UBTF-activated transcription, presumably at a

Nanjing BYabscience technology Co.,Ltd



step following PIC formation.,function:Isoform 2 has been described as a component of preformed T-cell receptor (TCR) complex.,miscellaneous:It is in an antisense orientation to and overlaps the gene of the DNA repair enzyme ERCC1. This gene overlap is conserved in mouse suggesting an

Background

caution:It is not known whether the so-called human ASE1 and human CAST proteins represent two sides of a single gene product with sharply different functional characteristics. Experiments done with the mouse homolog protein are in favor of an implication of this gene in rRNA transcription instead of T-cell receptor signaling.,function:DNA-dependent RNA polymerase catalyzes the transcription of DNA into RNA using the four ribonucleoside triphosphates as substrates. Component of RNA polymerase I which synthesizes ribosomal RNA precursors. Isoform 1 is involved in UBTF-activated transcription, presumably at a step following PIC formation.,function:Isoform 2 has been described as a component of preformed T-cell receptor (TCR) complex.,miscellaneous:It is in an antisense orientation to and overlaps the gene of the DNA repair enzyme ERCC1. This gene overlap is conserved in mouse suggesting an important biologic function.,PTM:Isoform 1 is phosphorylated on tyrosine residues in initiation-competent Pol I-beta complexes but not in Pol I-alpha complexes.,PTM:Isoform 2 undergoes tyrosine phosphorylation upon T-cell receptor (TCR) stimulation. This phosphorylation has not been confirmed by other group.,PTM:Phosphorylated upon DNA damage, probably by ATM or ATR.,similarity:Belongs to the eukaryotic RPA34 RNA polymerase subunit family.,subcellular location:Found at the fibrillar centers of the nucleolus in interphase and during cell division it is localized to the nucleolus organizer regions of the chromosomes.,subunit:Component of the RNA polymerase I (Pol I) complex consisting of at least 13 subunits. Interacts with TAF1A thereby associates with the SL1 complex. Interacts with UBTF. Interacts with POLR1E/PRAF1 through its N-terminal region (By similarity). Isoform 2 interacts with CD3E.,

matters needing attention

Avoid repeated freezing and thawing!

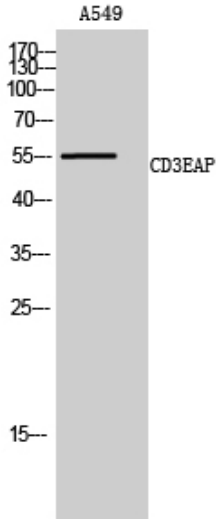
Usage suggestions

This product can be used in immunological reaction related experiments. For more information, please consult technical personnel.

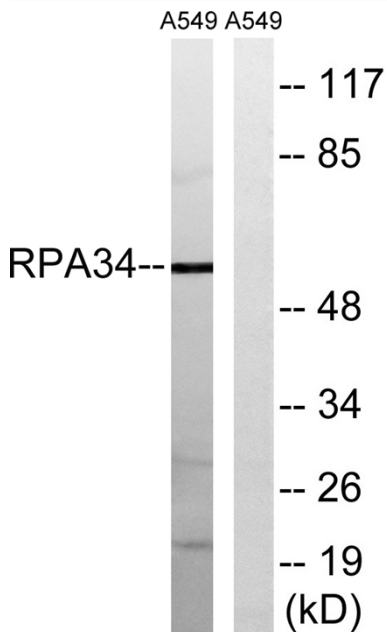
Nanjing BYabscience technology Co.,Ltd



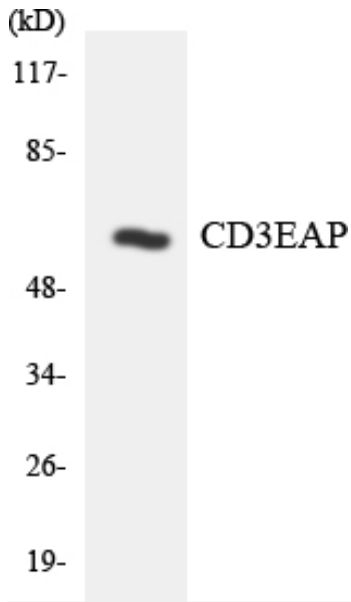
Products Images



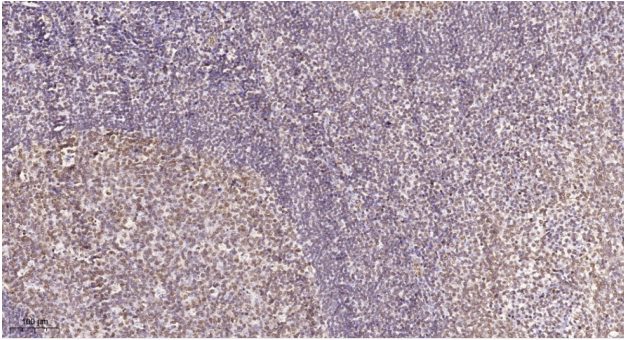
Western Blot analysis of A549 cells using CD3EAP Polyclonal Antibody cells nucleus extracted by Minute TM Cytoplasmic and Nuclear Fractionation kit (SC-003, Inventbiotech, MN, USA).



Western blot analysis of lysates from A549 cells, using CD3EAP Antibody. The lane on the right is blocked with the synthesized peptide.



Western blot analysis of the lysates from HUVEC cells using CD3EAP antibody.



Immunohistochemical analysis of paraffin-embedded human tonsil. 1, Tris-EDTA, pH 9.0 was used for antigen retrieval. 2 Antibody was diluted at 1:200 (4° overnight). 3, Secondary antibody was diluted at 1:200 (room temperature, 45 min).