



CBX6 Polyclonal Antibody

Catalog No	BYab-01593
Isotype	IgG
Reactivity	Human;Mouse;Rat
Applications	WB;IHC;IF;ELISA
Gene Name	CBX6
Protein Name	Chromobox protein homolog 6
Immunogen	The antiserum was produced against synthesized peptide derived from human CBX6. AA range:10-59
Specificity	CBX6 Polyclonal Antibody detects endogenous levels of CBX6 protein.
Formulation	Liquid in PBS containing 50% glycerol, 0.5% BSA and 0.02% sodium azide.
Source	Polyclonal, Rabbit,IgG
Purification	The antibody was affinity-purified from rabbit antiserum by affinity-chromatography using epitope-specific immunogen.
Dilution	WB: 1/500 - 1/2000. IHC: 1/100 - 1/300. ELISA: 1/20000.. IF 1:50-200
Concentration	1 mg/ml
Purity	≥90%
Storage Stability	-20°C/1 year
Synonyms	CBX6; Chromobox protein homolog 6
Observed Band	44kD
Cell Pathway	Nucleus . Chromosome . Uniformly distributed in the nucleoplasm (PubMed:18927235). Localizes to the inactivated X chromosome in females (By similarity). .
Tissue Specificity	Lung,Uterus,
Function	function:Involved in maintaining the transcriptionally repressive state of genes. Modifies chromatin, rendering it heritably changed in its expressibility.,similarity:Contains 1 chromo domain.,subunit:Component of the chromatin-associated polycomb complex (PcG).,
Background	function:Involved in maintaining the transcriptionally repressive state of genes. Modifies chromatin, rendering it heritably changed in its expressibility.,similarity:Contains 1 chromo domain.,subunit:Component of the chromatin-associated polycomb complex (PcG).,

Nanjing BYabscience technology Co.,Ltd



matters needing attention

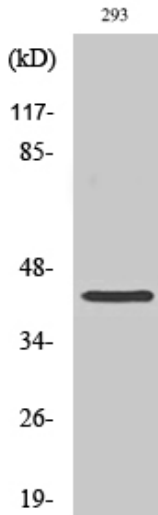
Avoid repeated freezing and thawing!

Usage suggestions

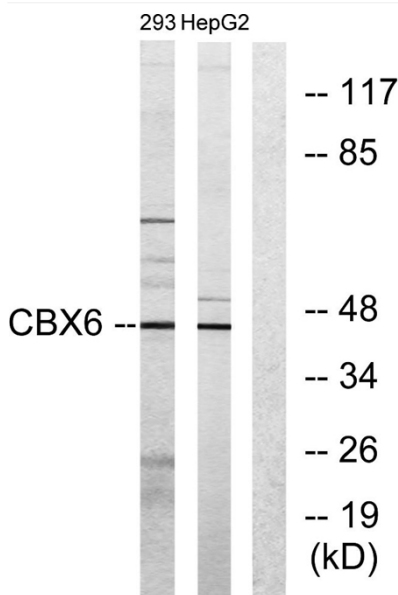
This product can be used in immunological reaction related experiments. For more information, please consult technical personnel.



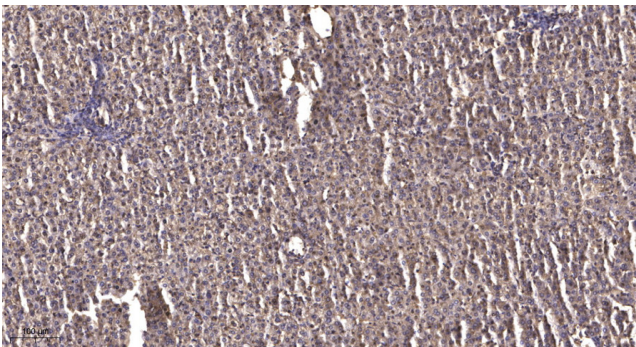
Products Images



Western Blot analysis of various cells using CBX6 Polyclonal Antibody cells nucleus extracted by Minute TM Cytoplasmic and Nuclear Fractionation kit (SC-003, Inventbiotech, MN, USA).



Western blot analysis of lysates from 293 and HepG2 cells, using CBX6 Antibody. The lane on the right is blocked with the synthesized peptide.



Immunohistochemical analysis of paraffin-embedded human liver cancer. 1, Antibody was diluted at 1:200(4° overnight). 2, Tris-EDTA, pH9.0 was used for antigen retrieval. 3, Secondary antibody was diluted at 1:200(room temperature, 45min).