



CBP80 Polyclonal Antibody

Catalog No	BYab-01591
Isotype	IgG
Reactivity	Human;Mouse;Rat
Applications	WB;IHC;IF;ELISA
Gene Name	NCBP1
Protein Name	Nuclear cap-binding protein subunit 1
Immunogen	The antiserum was produced against synthesized peptide derived from human NCBP1. AA range:1-50
Specificity	CBP80 Polyclonal Antibody detects endogenous levels of CBP80 protein.
Formulation	Liquid in PBS containing 50% glycerol, 0.5% BSA and 0.02% sodium azide.
Source	Polyclonal, Rabbit,IgG
Purification	The antibody was affinity-purified from rabbit antiserum by affinity-chromatography using epitope-specific immunogen.
Dilution	WB: 1/500 - 1/2000. IHC: 1/100 - 1/300. ELISA: 1/20000.. IF 1:50-200
Concentration	1 mg/ml
Purity	≥90%
Storage Stability	-20°C/1 year
Synonyms	NCBP1; CBP80; NCBP; Nuclear cap-binding protein subunit 1; 80 kDa nuclear cap-binding protein; CBP80; NCBP 80 kDa subunit
Observed Band	80kD
Cell Pathway	Nucleus . Cytoplasm . Localized in cytoplasmic mRNP granules containing untranslated mRNAs. .
Tissue Specificity	Brain,Epithelium,Placenta,
Function	function:Involved in mediating U snRNA export from the nucleus. Binds to 5' capped mRNA.,similarity:Belongs to the NCBP1 family.,similarity:Contains 1 MIF4G domain.,subunit:Found in a U snRNA export complex with RNUXA/PHAX, CBP20, CBP80, RAN, XPO1 and m7G-capped RNA. Interaction with RNUXA/PHAX (By similarity). Heterodimer with NCBP2. Is part of the exon junction complex (EJC) containing NCBP1, NCBP2, RNPS1, RBM8A, SRRM1, NXF1, UPF3B, UPF2, THOC4 and/or REFBP2.,
Background	The product of this gene is a component of the nuclear cap-binding protein complex (CBC), which binds to the monomethylated 5' cap of nascent

Nanjing BYabscience technology Co.,Ltd



pre-mRNA in the nucleoplasm. The encoded protein promotes high-affinity mRNA-cap binding and associates with the CTD of RNA polymerase II. The CBC promotes pre-mRNA splicing, 3'-end processing, RNA nuclear export, and nonsense-mediated mRNA decay. [provided by RefSeq, Jul 2008],

matters needing attention

Avoid repeated freezing and thawing!

Usage suggestions

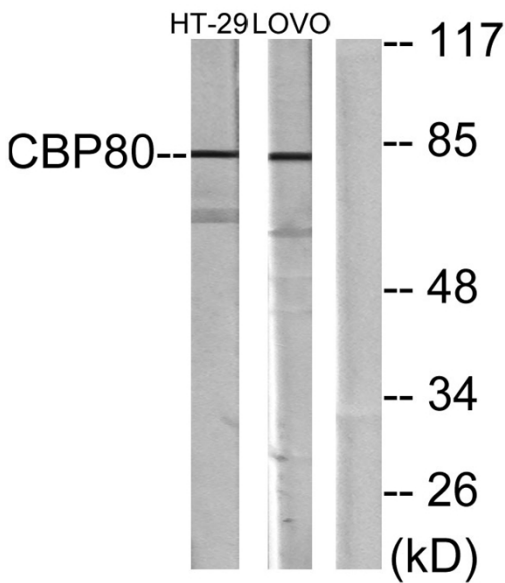
This product can be used in immunological reaction related experiments. For more information, please consult technical personnel.



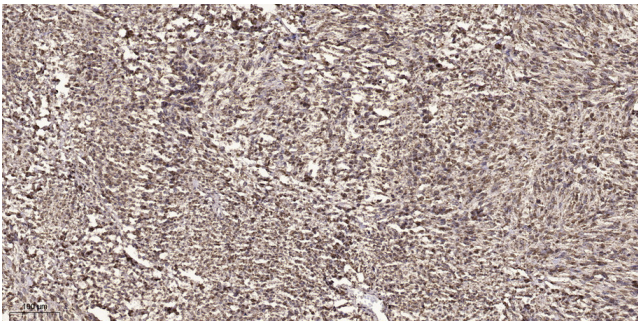
Products Images



Western Blot analysis of various cells using CBP80 Polyclonal Antibody diluted at 1:500



Western blot analysis of lysates from HT-29 and LOVO cells, using NCBP1 Antibody. The lane on the right is blocked with the synthesized peptide.



Immunohistochemical analysis of paraffin-embedded human small intestinal carcinoma tissue. 1, primary Antibody was diluted at 1:200 (4° overnight). 2, Sodium citrate pH 6.0 was used for antigen retrieval (>98° C, 20min). 3, Secondary antibody was diluted at 1:200

Nanjing BYabscience technology Co.,Ltd