



CBP20 Polyclonal Antibody

Catalog No	BYab-01590
Isotype	IgG
Reactivity	Human;Mouse
Applications	WB;IHC;IF;ELISA
Gene Name	NCBP2
Protein Name	Nuclear cap-binding protein subunit 2
Immunogen	The antiserum was produced against synthesized peptide derived from human NCBP2. AA range:10-59
Specificity	CBP20 Polyclonal Antibody detects endogenous levels of CBP20 protein.
Formulation	Liquid in PBS containing 50% glycerol, 0.5% BSA and 0.02% sodium azide.
Source	Polyclonal, Rabbit,IgG
Purification	The antibody was affinity-purified from rabbit antiserum by affinity-chromatography using epitope-specific immunogen.
Dilution	Western Blot: 1/500 - 1/2000. Immunohistochemistry: 1/100 - 1/300. Immunofluorescence: 1/200 - 1/1000. ELISA: 1/5000. Not yet tested in other applications.
Concentration	1 mg/ml
Purity	≥90%
Storage Stability	-20°C/1 year
Synonyms	NCBP2; CBP20; PIG55; Nuclear cap-binding protein subunit 2; 20 kDa nuclear cap-binding protein; Cell proliferation-inducing gene 55 protein; NCBP 20 kDa subunit; CBP20; NCBP-interacting protein 1; NIP1
Observed Band	18kD
Cell Pathway	Nucleus . Cytoplasm .
Tissue Specificity	Cervix,Cervix carcinoma,Human small intestine,
Function	function:Involved in mediating U snRNA export from the nucleus. Binds to 5' capped mRNA.,PTM:Phosphorylated upon DNA damage, probably by ATM or ATR.,similarity:Belongs to the RRM NCBP2 family.,similarity:Contains 1 RRM (RNA recognition motif) domain.,subunit:Found in a U snRNA export complex with RNUXA/PHAX, NCBP1, NCBP2, RAN, XPO1 and m7G-capped RNA (By similarity). Heterodimer with NCBP1. Is part of the exon junction complex (EJC) containing NCBP1, NCBP2, RNPS1, RBM8A, SRRM1, NXF1, UPF3B, UPF2, THOC4 and/or REFBP2.,

Nanjing BYabscience technology Co.,Ltd



Background

The product of this gene is a component of the nuclear cap-binding protein complex (CBC), which binds to the monomethylated 5' cap of nascent pre-mRNA in the nucleoplasm. The encoded protein has an RNP domain commonly found in RNA binding proteins, and contains the cap-binding activity. The CBC promotes pre-mRNA splicing, 3'-end processing, RNA nuclear export, and nonsense-mediated mRNA decay. Multiple transcript variants encoding different isoforms have been found for this gene. [provided by RefSeq, Jul 2008],

matters needing attention

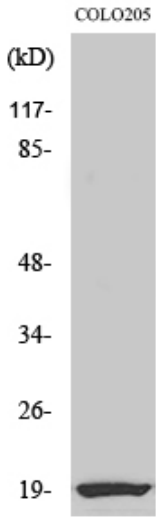
Avoid repeated freezing and thawing!

Usage suggestions

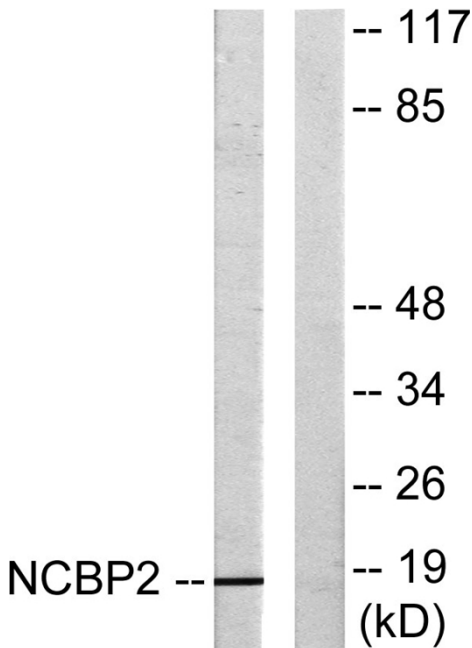
This product can be used in immunological reaction related experiments. For more information, please consult technical personnel.



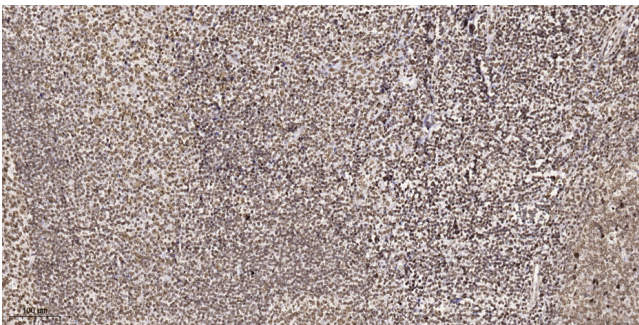
Products Images



Western Blot analysis of various cells using CBP20 Polyclonal Antibody



Western blot analysis of lysates from COLO205 cells, using NCBP2 Antibody. The lane on the right is blocked with the synthesized peptide.



Immunohistochemical analysis of paraffin-embedded human tonsil. 1, Tris-EDTA, pH9.0 was used for antigen retrieval. 2 Antibody was diluted at 1:200(4° overnight). 3, Secondary antibody was diluted at 1:200(room temperature, 45min).