



# C/EBP $\zeta$ Polyclonal Antibody

<b>Catalog No</b>	BYab-01584
<b>Isotype</b>	IgG
<b>Reactivity</b>	Human;Rat;Mouse;
<b>Applications</b>	WB;IHC;IF;ELISA
<b>Gene Name</b>	CEBPZ
<b>Protein Name</b>	CCAAT/enhancer-binding protein zeta
<b>Immunogen</b>	The antiserum was produced against synthesized peptide derived from human CEBPZ. AA range:1-50
<b>Specificity</b>	C/EBP $\zeta$ Polyclonal Antibody detects endogenous levels of C/EBP $\zeta$ protein.
<b>Formulation</b>	Liquid in PBS containing 50% glycerol, 0.5% BSA and 0.02% sodium azide.
<b>Source</b>	Polyclonal, Rabbit,IgG
<b>Purification</b>	The antibody was affinity-purified from rabbit antiserum by affinity-chromatography using epitope-specific immunogen.
<b>Dilution</b>	Western Blot: 1/500 - 1/2000. Immunohistochemistry: 1/100 - 1/300. Immunofluorescence: 1/200 - 1/1000. ELISA: 1/20000. Not yet tested in other applications.
<b>Concentration</b>	1 mg/ml
<b>Purity</b>	$\geq 90\%$
<b>Storage Stability</b>	-20°C/1 year
<b>Synonyms</b>	CEBPZ; CBF2; CCAAT/enhancer-binding protein zeta; CCAAT-box-binding transcription factor; CBF; CCAAT-binding factor
<b>Observed Band</b>	120kD
<b>Cell Pathway</b>	Nucleus.
<b>Tissue Specificity</b>	Epithelium,Testis,
<b>Function</b>	function:Stimulates transcription from the HSP70 promoter.,similarity:Belongs to the CBF/MAK21 family.,
<b>Background</b>	This gene belongs to the CEBP family. The encoded protein plays a role in cellular response to environmental stimuli through a transcriptional process that involves heat shock factors, conserved DNA elements (heat shock elements or HSEs) and CCAAT boxes. The protein acts as a DNA-binding transcriptional activator and regulates the heat-shock protein 70 (HSP70) promoter in a CCAAT-dependent manner. The protein is also involved in cell growth and

Nanjing BYabscience technology Co.,Ltd



differentiation, particularly, hematopoietic differentiation. Methylation of the promoter of this gene or mutations within the gene may be correlated with occurrence of acute myeloid leukemia (AML). [provided by RefSeq, Jun 2016],

**matters needing attention**

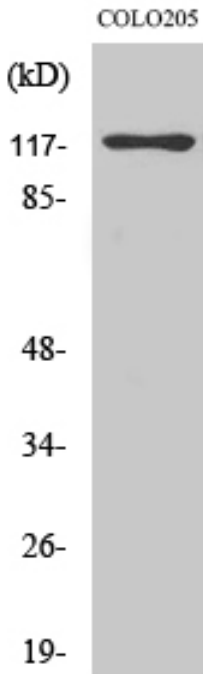
Avoid repeated freezing and thawing!

**Usage suggestions**

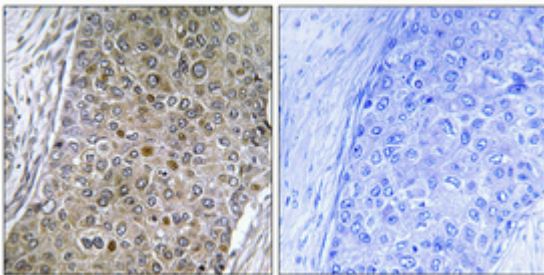
This product can be used in immunological reaction related experiments. For more information, please consult technical personnel.



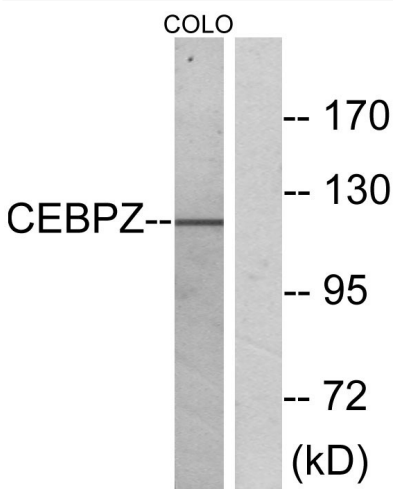
## Products Images



Western Blot analysis of various cells using C/EBP  $\zeta$  Polyclonal Antibody cells nucleus extracted by Minute TM Cytoplasmic and Nuclear Fractionation kit (SC-003, Inventbiotech, MN, USA).



Immunohistochemical analysis of paraffin-embedded Human breast cancer. Antibody was diluted at 1:100(4° overnight). High-pressure and temperature Tris-EDTA, pH8.0 was used for antigen retrieval. Negative contrl (right) obtained from antibody was pre-absorbed by immunogen peptide.



Western blot analysis of lysates from COLO cells, using CEBPZ Antibody. The lane on the right is blocked with the synthesized peptide.

Nanjing BYabscience technology Co.,Ltd