



C/EBP γ Polyclonal Antibody

| | |
|---------------------------|---|
| Catalog No | BYab-01581 |
| Isotype | IgG |
| Reactivity | Human;Mouse;Rat |
| Applications | WB;IHC;IF;ELISA |
| Gene Name | CEBPG |
| Protein Name | CCAAT/enhancer-binding protein gamma |
| Immunogen | The antiserum was produced against synthesized peptide derived from human CEBPG. AA range:31-80 |
| Specificity | C/EBP γ Polyclonal Antibody detects endogenous levels of C/EBP γ protein. |
| Formulation | Liquid in PBS containing 50% glycerol, 0.5% BSA and 0.02% sodium azide. |
| Source | Polyclonal, Rabbit,IgG |
| Purification | The antibody was affinity-purified from rabbit antiserum by affinity-chromatography using epitope-specific immunogen. |
| Dilution | Western Blot: 1/500 - 1/2000. Immunohistochemistry: 1/100 - 1/300. Immunofluorescence: 1/200 - 1/1000. ELISA: 1/20000. Not yet tested in other applications. |
| Concentration | 1 mg/ml |
| Purity | $\geq 90\%$ |
| Storage Stability | -20°C/1 year |
| Synonyms | CEBPG; CCAAT/enhancer-binding protein gamma; C/EBP gamma |
| Observed Band | 22kD |
| Cell Pathway | Nucleus . |
| Tissue Specificity | Placenta,T-cell,Trachea, |
| Function | function:Transcription factor that binds to the enhancer element PRE-I (positive regulatory element-I) of the IL-4 gene. Might change the DNA-binding specificity of other transcription factors and recruit them to unusual DNA sites.,similarity:Belongs to the bZIP family. C/EBP subfamily.,similarity:Contains 1 bZIP domain.,subunit:Binds DNA as a dimer and can form stable heterodimers with C/EBP alpha and beta and with Fos protein., |
| Background | The C/EBP family of transcription factors regulates viral and cellular CCAAT/enhancer element-mediated transcription. C/EBP proteins contain the bZIP region, which is characterized by two motifs in the C-terminal half of the |

Nanjing BYabscience technology Co.,Ltd



protein: a basic region involved in DNA binding and a leucine zipper motif involved in dimerization. The C/EBP family consist of several related proteins, C/EBP alpha, C/EBP beta, C/EBP gamma, and C/EBP delta, that form homodimers and that form heterodimers with each other. CCAAT/enhancer binding protein gamma may cooperate with Fos to bind PRE-I enhancer elements. Two transcript variants encoding the same protein have been found for this gene. [provided by RefSeq, Nov 2011],

matters needing attention

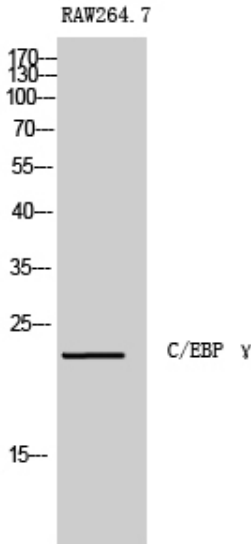
Avoid repeated freezing and thawing!

Usage suggestions

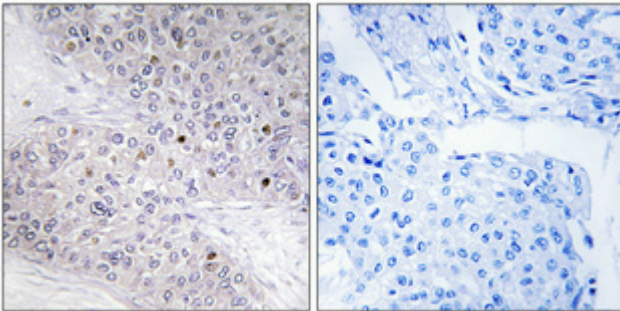
This product can be used in immunological reaction related experiments. For more information, please consult technical personnel.



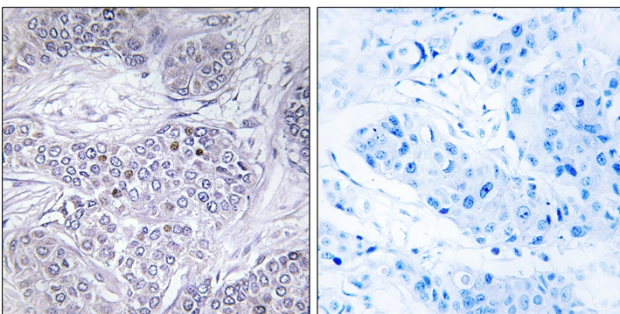
Products Images



Western Blot analysis of RAW264.7 cells using C/EBP γ Polyclonal Antibody cells nucleus extracted by Minute TM Cytoplasmic and Nuclear Fractionation kit (SC-003, Inventibiotech, MN, USA).



Immunohistochemical analysis of paraffin-embedded Human breast cancer. Antibody was diluted at 1:100(4° overnight). High-pressure and temperature Tris-EDTA, pH8.0 was used for antigen retrieval. Negative control (right) obtained from antibody was pre-absorbed by immunogen peptide.



Immunohistochemistry analysis of paraffin-embedded human breast carcinoma tissue, using CEBPG Antibody. The picture on the right is blocked with the synthesized peptide.

