



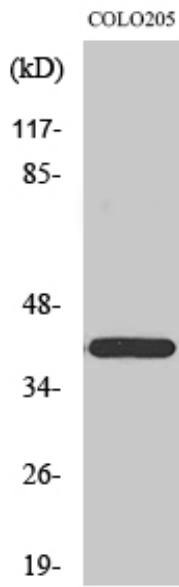
Brp16 Polyclonal Antibody

Catalog No	BYab-01572
Isotype	IgG
Reactivity	Human;Mouse;Rat
Applications	WB;IHC;IF;ELISA
Gene Name	FAM203A
Protein Name	Protein FAM203A
Immunogen	The antiserum was produced against synthesized peptide derived from human BRP16. AA range:251-300
Specificity	Brp16 Polyclonal Antibody detects endogenous levels of Brp16 protein.
Formulation	Liquid in PBS containing 50% glycerol, 0.5% BSA and 0.02% sodium azide.
Source	Polyclonal, Rabbit,IgG
Purification	The antibody was affinity-purified from rabbit antiserum by affinity-chromatography using epitope-specific immunogen.
Dilution	WB: 1/500 - 1/2000. IHC: 1/100 - 1/300. ELISA: 1/40000.. IF 1:50-200
Concentration	1 mg/ml
Purity	≥90%
Storage Stability	-20°C/1 year
Synonyms	FAM203A; BRP16; C8orf30A; Protein FAM203A; Brain protein 16
Observed Band	40kD
Cell Pathway	
Tissue Specificity	Colon,Lung,Umbilical cord blood,
Function	similarity:Belongs to the UPF0570 (BRP16/HGH1) family.,
Background	similarity:Belongs to the UPF0570 (BRP16/HGH1) family.,
matters needing attention	Avoid repeated freezing and thawing!
Usage suggestions	This product can be used in immunological reaction related experiments. For more information, please consult technical personnel.

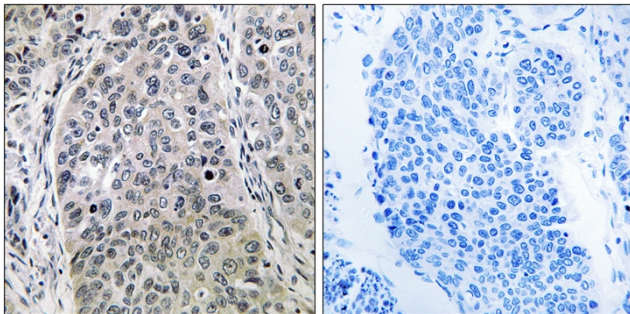
Nanjing BYabscience technology Co.,Ltd



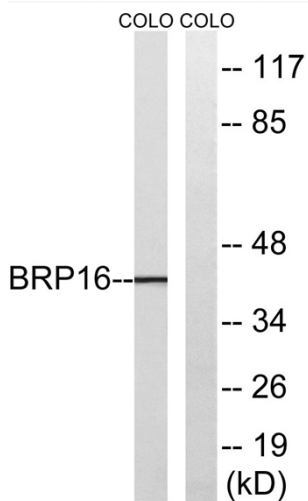
Products Images



Western Blot analysis of various cells using Brp16 Polyclonal Antibody



Immunohistochemistry analysis of paraffin-embedded human lung carcinoma tissue, using BRP16 Antibody. The picture on the right is blocked with the synthesized peptide.



Western blot analysis of lysates from COLO cells, using BRP16 Antibody. The lane on the right is blocked with the synthesized peptide.

Nanjing BYabscience technology Co.,Ltd



Nanjing BYabscience technology Co.,Ltd

网址: www.njbybio.com

官方热线: 025-5229-8998

监督电话: 15950492658