



BCoR Polyclonal Antibody

Catalog No	BYab-01567
Isotype	IgG
Reactivity	Human;Mouse
Applications	WB;IHC;IF;ELISA
Gene Name	BCOR
Protein Name	BCL-6 corepressor
Immunogen	The antiserum was produced against synthesized peptide derived from human BCOR. AA range:1231-1280
Specificity	BCoR Polyclonal Antibody detects endogenous levels of BCoR protein.
Formulation	Liquid in PBS containing 50% glycerol, 0.5% BSA and 0.02% sodium azide.
Source	Polyclonal, Rabbit,IgG
Purification	The antibody was affinity-purified from rabbit antiserum by affinity-chromatography using epitope-specific immunogen.
Dilution	WB: 1/500 - 1/2000. IHC: 1/100 - 1/300. ELISA: 1/20000.. IF 1:50-200
Concentration	1 mg/ml
Purity	≥90%
Storage Stability	-20°C/1 year
Synonyms	BCOR; KIAA1575; BCL-6 corepressor; BCoR
Observed Band	192kD
Cell Pathway	Nucleus .
Tissue Specificity	Ubiquitously expressed.
Function	disease:Defects in BCOR are the cause of microphthalmia syndromic type 2 (MCOPS2) [MIM:300166]. Microphthalmia is a clinically heterogeneous disorder of eye formation, ranging from small size of a single eye to complete bilateral absence of ocular tissues (anophthalmia). In many cases, microphthalmia/anophthalmia occurs in association with syndromes that include non-ocular abnormalities. MCOPS2 is a very rare multiple congenital anomaly syndrome characterized by eye anomalies (congenital cataract, microphthalmia, or secondary glaucoma), facial abnormalities (long narrow face, high nasal bridge, pointed nose with cartilages separated at the tip, cleft palate, or submucous cleft palate), cardiac anomalies (atrial septal defect, ventricular septal defect, or floppy mitral valve) and dental abnormalities (canine radiculomegaly, delayed dentition,

Nanjing BYabscience technology Co.,Ltd



oligodontia, persistent primary teeth, or var

Background

The protein encoded by this gene was identified as an interacting corepressor of BCL6, a POZ/zinc finger transcription repressor that is required for germinal center formation and may influence apoptosis. This protein selectively interacts with the POZ domain of BCL6, but not with eight other POZ proteins. Specific class I and II histone deacetylases (HDACs) have been shown to interact with this protein, which suggests a possible link between the two classes of HDACs. Several transcript variants encoding different isoforms have been found for this gene. A pseudogene of this gene is found on chromosome Y.[provided by RefSeq, Jun 2010],

matters needing attention

Avoid repeated freezing and thawing!

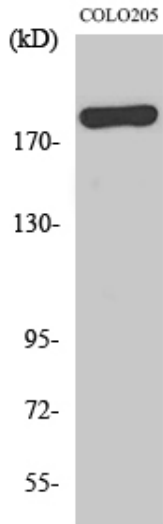
Usage suggestions

This product can be used in immunological reaction related experiments. For more information, please consult technical personnel.

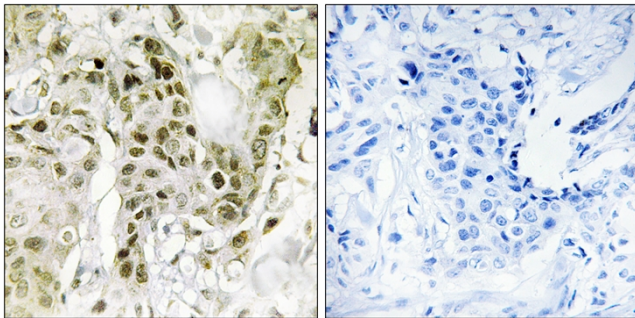
Nanjing BYabscience technology Co.,Ltd



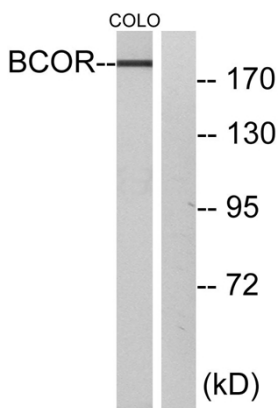
Products Images



Western Blot analysis of various cells using BCoR Polyclonal Antibody diluted at 1:500 cells nucleus extracted by Minute TM Cytoplasmic and Nuclear Fractionation kit (SC-003, Inventbiotech, MN, USA).



Immunohistochemistry analysis of paraffin-embedded human breast carcinoma tissue, using BCOR Antibody. The picture on the right is blocked with the synthesized peptide.



Western blot analysis of lysates from COLO cells, using BCOR Antibody. The lane on the right is blocked with the synthesized peptide.