



# BAF170 Polyclonal Antibody

<b>Catalog No</b>	BYab-01561
<b>Isotype</b>	IgG
<b>Reactivity</b>	Human;Mouse
<b>Applications</b>	WB;IF;ELISA
<b>Gene Name</b>	SMARCC2
<b>Protein Name</b>	SWI/SNF complex subunit SMARCC2
<b>Immunogen</b>	The antiserum was produced against synthesized peptide derived from human SMRC2. AA range:361-410
<b>Specificity</b>	BAF170 Polyclonal Antibody detects endogenous levels of BAF170 protein.
<b>Formulation</b>	Liquid in PBS containing 50% glycerol, 0.5% BSA and 0.02% sodium azide.
<b>Source</b>	Polyclonal, Rabbit,IgG
<b>Purification</b>	The antibody was affinity-purified from rabbit antiserum by affinity-chromatography using epitope-specific immunogen.
<b>Dilution</b>	Western Blot: 1/500 - 1/2000. Immunofluorescence: 1/200 - 1/1000. ELISA: 1/10000. Not yet tested in other applications.
<b>Concentration</b>	1 mg/ml
<b>Purity</b>	≥90%
<b>Storage Stability</b>	-20°C/1 year
<b>Synonyms</b>	SMARCC2; BAF170; SWI/SNF complex subunit SMARCC2; BRG1-associated factor 170; BAF170; SWI/SNF complex 170 kDa subunit; SWI/SNF-related matrix-associated actin-dependent regulator of chromatin subfamily C member 2
<b>Observed Band</b>	160kD
<b>Cell Pathway</b>	Nucleus.
<b>Tissue Specificity</b>	Ubiquitously expressed.
<b>Function</b>	function:Involved in transcriptional activation and repression of select genes by chromatin remodeling (alteration of DNA-nucleosome topology). Can stimulate the ATPase activity of the catalytic subunit of these complexes. May be required for CoREST dependent repression of neuronal specific gene promoters in non-neuronal cells. Also involved in vitamin D-coupled transcription regulation via its association with the WINAC complex, a chromatin-remodeling complex recruited by vitamin D receptor (VDR), which is required for the ligand-bound VDR-mediated transrepression of the CYP27B1 gene.,similarity:Belongs to the SMARCC family.,similarity:Contains 1 SANT domain.,similarity:Contains 1

**Nanjing BYabscience technology Co.,Ltd**



SWIRM domain.,subunit:Component of 6 multiprotein chromatin-remodeling complexes: Swi/Snf-A (BAF), Swi/Snf-B (PBAF), Brm, Brg1(I), WINAC and Brg1(II). Each of the five complexes contains a catalytic subunit (e

### Background

The protein encoded by this gene is a member of the SWI/SNF family of proteins, whose members display helicase and ATPase activities and which are thought to regulate transcription of certain genes by altering the chromatin structure around those genes. The encoded protein is part of the large ATP-dependent chromatin remodeling complex SNF/SWI and contains a predicted leucine zipper motif typical of many transcription factors. Alternatively spliced transcript variants encoding different isoforms have been found for this gene. [provided by RefSeq, Jul 2008],

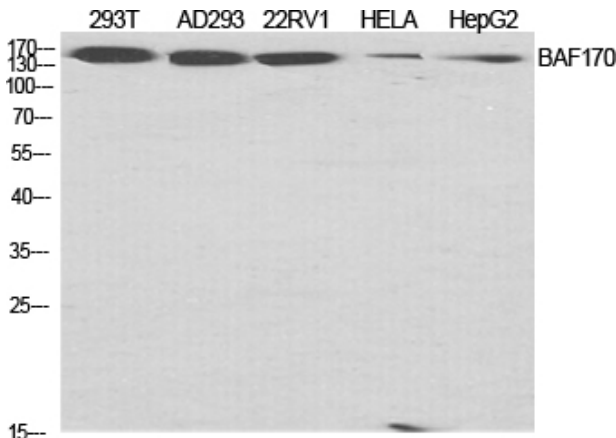
### matters needing attention

Avoid repeated freezing and thawing!

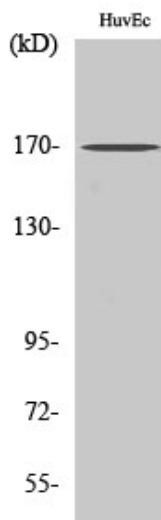
### Usage suggestions

This product can be used in immunological reaction related experiments. For more information, please consult technical personnel.

## Products Images

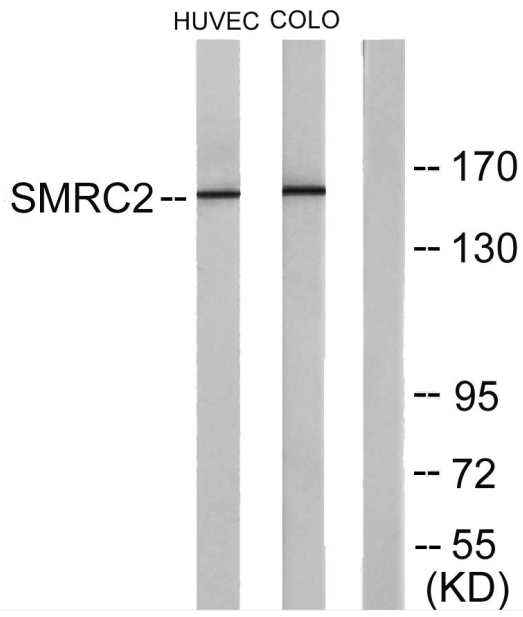


Western Blot analysis of various cells using BAF170 Polyclonal Antibody diluted at 1:2000 cells nucleus extracted by Minute TM Cytoplasmic and Nuclear Fractionation kit (SC-003, Inventbiotech, MN, USA).



Western Blot analysis of COLO205 cells using BAF170 Polyclonal Antibody diluted at 1:2000 cells nucleus extracted by Minute TM Cytoplasmic and Nuclear Fractionation kit (SC-003, Inventbiotech, MN, USA).

Nanjing BYabscience technology Co.,Ltd



Western blot analysis of lysates from HUVEC and COLO205 cells, using SMRC2 Antibody. The lane on the right is blocked with the synthesized peptide.