



# APOBEC4 Polyclonal Antibody

<b>Catalog No</b>	BYab-01536
<b>Isotype</b>	IgG
<b>Reactivity</b>	Human;Rat;Mouse;
<b>Applications</b>	WB;ELISA
<b>Gene Name</b>	APOBEC4
<b>Protein Name</b>	Putative C->U-editing enzyme APOBEC-4
<b>Immunogen</b>	The antiserum was produced against synthesized peptide derived from human APOBEC4. AA range:309-358
<b>Specificity</b>	APOBEC4 Polyclonal Antibody detects endogenous levels of APOBEC4 protein.
<b>Formulation</b>	Liquid in PBS containing 50% glycerol, 0.5% BSA and 0.02% sodium azide.
<b>Source</b>	Polyclonal, Rabbit,IgG
<b>Purification</b>	The antibody was affinity-purified from rabbit antiserum by affinity-chromatography using epitope-specific immunogen.
<b>Dilution</b>	Western Blot: 1/500 - 1/2000. ELISA: 1/10000. Not yet tested in other applications.
<b>Concentration</b>	1 mg/ml
<b>Purity</b>	≥90%
<b>Storage Stability</b>	-20°C/1 year
<b>Synonyms</b>	APOBEC4; C1orf169; Putative C->U-editing enzyme APOBEC-4; Apolipoprotein B mRNA-editing enzyme catalytic polypeptide-like 4
<b>Observed Band</b>	40kD
<b>Cell Pathway</b>	
<b>Tissue Specificity</b>	Predominantly expressed in testis.
<b>Function</b>	cofactor:Zinc.,function:Putative C to U editing enzyme whose physiological substrate is not yet known.,similarity:Belongs to the cytidine and deoxycytidylate deaminase family.,tissue specificity:Predominantly expressed in testis.,
<b>Background</b>	This gene encodes a member of the AID/APOBEC family of polynucleotide (deoxy)cytidine deaminases, which convert cytidine to uridine. Other AID/APOBEC family members are involved in mRNA editing, somatic hypermutation and recombination of immunoglobulin genes, and innate immunity to retroviral infection. [provided by RefSeq, Jul 2008],

Nanjing BYabscience technology Co.,Ltd



**matters needing attention**

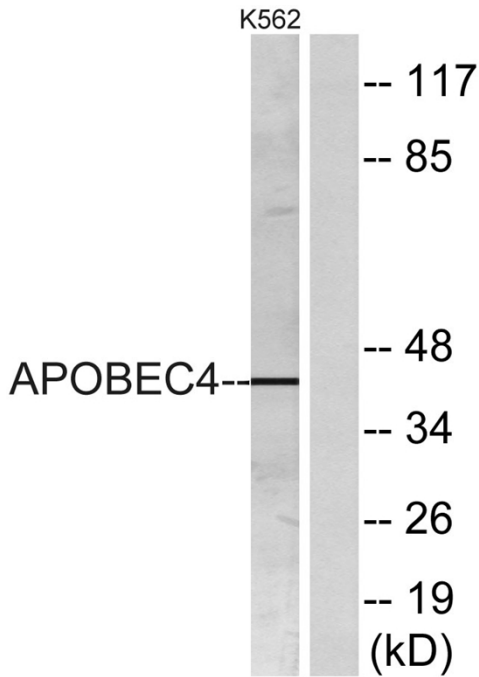
Avoid repeated freezing and thawing!

**Usage suggestions**

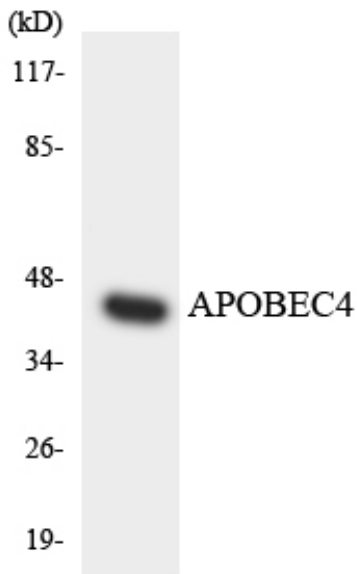
This product can be used in immunological reaction related experiments. For more information, please consult technical personnel.



## Products Images



Western blot analysis of lysates from K562 cells, using APOBEC4 Antibody. The lane on the right is blocked with the synthesized peptide.



Western blot analysis of the lysates from HT-29 cells using APOBEC4 antibody.