



APLF Polyclonal Antibody

Catalog No	BYab-01533
Isotype	IgG
Reactivity	Human;Mouse
Applications	WB;IHC;IF;ELISA
Gene Name	APLF
Protein Name	Aprataxin and PNK-like factor
Immunogen	The antiserum was produced against synthesized peptide derived from human APLF. AA range:82-131
Specificity	APLF Polyclonal Antibody detects endogenous levels of APLF protein.
Formulation	Liquid in PBS containing 50% glycerol, 0.5% BSA and 0.02% sodium azide.
Source	Polyclonal, Rabbit,IgG
Purification	The antibody was affinity-purified from rabbit antiserum by affinity-chromatography using epitope-specific immunogen.
Dilution	WB: 1/500 - 1/2000. IHC: 1/100 - 1/300. ELISA: 1/40000.. IF 1:50-200
Concentration	1 mg/ml
Purity	≥90%
Storage Stability	-20°C/1 year
Synonyms	APLF; C2orf13; PALF; XIP1; Aprataxin and PNK-like factor; Apurinic-apyrimidinic endonuclease APLF; PNK and APTX-like FHA domain-containing protein; XRCC1-interacting protein 1
Observed Band	57kD
Cell Pathway	Nucleus . Chromosome . Cytoplasm, cytosol . Localizes to DNA damage sites (PubMed:18474613, PubMed:18172500, PubMed:21211721, PubMed:23689425). Accumulates at single-strand breaks and double-strand breaks via the PBZ-type zinc fingers (PubMed:18172500). .
Tissue Specificity	Testis,
Function	domain:The FHA-like domain mediates interaction with XRCC1 and XRCC4.,function:Involved in single-strand and double-strand DNA break repair.,PTM:Phosphorylated in an ATM-dependent manner upon double-strand DNA break.,similarity:Contains 1 FHA-like domain.,similarity:Contains 2 C2H2-type zinc fingers.,subcellular location:Colocalizes with XRCC1 at sites of DNA damage.,subunit:Interacts with XRCC1. May also interact with XRCC4 and XRCC5.,

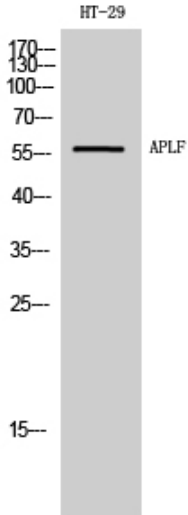
Nanjing BYabscience technology Co.,Ltd



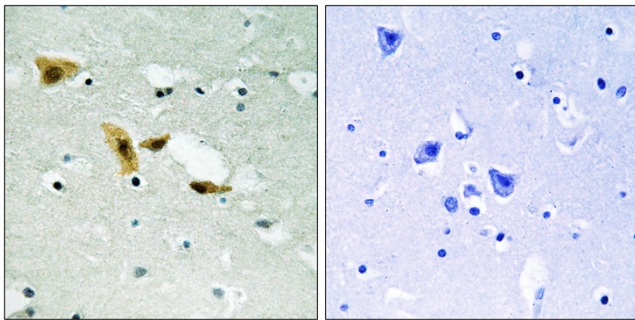
Background	C2ORF13 is a component of the cellular response to chromosomal DNA single- and double-strand breaks (Iles et al., 2007 [PubMed 17353262]).[supplied by OMIM, Mar 2008],
matters needing attention	Avoid repeated freezing and thawing!
Usage suggestions	This product can be used in immunological reaction related experiments. For more information, please consult technical personnel.



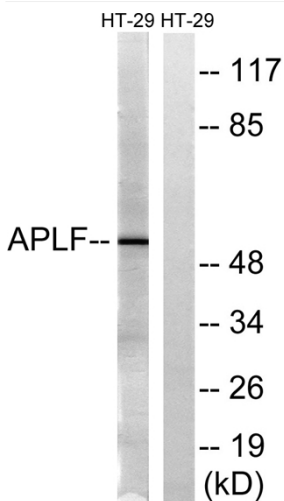
Products Images



Western Blot analysis of HT-29 cells using APLF Polyclonal Antibody



Immunohistochemistry analysis of paraffin-embedded human brain tissue, using APLF Antibody. The picture on the right is blocked with the synthesized peptide.



Western blot analysis of lysates from HT-29 cells, using APLF Antibody. The lane on the right is blocked with the synthesized peptide.