



AMY-1 Polyclonal Antibody

Catalog No	BYab-01527
Isotype	IgG
Reactivity	Human;Mouse
Applications	IHC;IF;ELISA
Gene Name	MYCBP
Protein Name	C-Myc-binding protein
Immunogen	Synthesized peptide derived from AMY-1 . at AA range: 30-110
Specificity	AMY-1 Polyclonal Antibody detects endogenous levels of AMY-1 protein.
Formulation	Liquid in PBS containing 50% glycerol, 0.5% BSA and 0.02% sodium azide.
Source	Polyclonal, Rabbit,IgG
Purification	The antibody was affinity-purified from rabbit antiserum by affinity-chromatography using epitope-specific immunogen.
Dilution	IHC: 1/100 - 1/300. ELISA: 1/10000.. IF 1:50-200
Concentration	1 mg/ml
Purity	≥90%
Storage Stability	-20°C/1 year
Synonyms	MYCBP; AMY1; C-Myc-binding protein; Associate of Myc 1; AMY-1
Observed Band	
Cell Pathway	Cytoplasm. Nucleus. Mitochondrion. Translocates into the nucleus in the S phase of the cell cycle upon an increase of MYC expression. Found in the mitochondria when associated with AKAP1.
Tissue Specificity	Highly expressed in heart, placenta, pancreas, skeletal muscle and kidney. Also present at low levels in lung.
Function	function:May control the transcriptional activity of MYC. Stimulates the activation of E box-dependent transcription by MYC.,similarity:Belongs to the AMY1 family.,subcellular location:Translocates into the nucleus in the S phase of the cell cycle upon an increase of c-Myc expression. Found in the mitochondria when associated with AKAP1.,subunit:Binds via its C-terminal region to the N-terminal region of MYC. Associates with AKAP1/S-AKAP84. Interacts with MYCBPAP.,tissue specificity:Highly expressed in heart, placenta, pancreas, skeletal muscle and kidney. Also present at low levels in lung.,
Background	The protein encoded by this gene binds to the N-terminus of the oncogenic protein C-MYC, enhancing the ability of C-MYC to activate E box-dependent

Nanjing BYabscience technology Co.,Ltd



transcription. The encoded protein is normally found in the cytoplasm, but it translocates to the nucleus during S phase of the cell cycle and associates with C-MYC. This protein may be involved in spermatogenesis. This gene can be silenced by microRNA-22. Two transcript variants, one protein-coding and the other probably not protein-coding, have been found for this gene. [provided by RefSeq, Nov 2011],

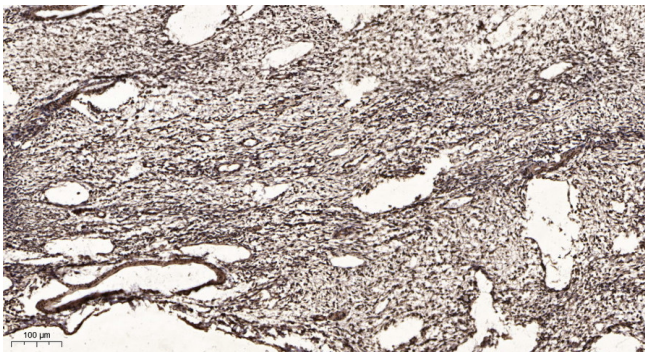
matters needing attention

Avoid repeated freezing and thawing!

Usage suggestions

This product can be used in immunological reaction related experiments. For more information, please consult technical personnel.

Products Images



Immunohistochemical analysis of paraffin-embedded human oophoroma. 1, Antibody was diluted at 1:200(4° overnight). 2, Tris-EDTA,pH9.0 was used for antigen retrieval. 3,Secondary antibody was diluted at 1:200(room temperature, 45min).