



# AF-10 Polyclonal Antibody

|                           |                                                                                                                                                                                                                                                                                                                                                                                                                                                                                            |
|---------------------------|--------------------------------------------------------------------------------------------------------------------------------------------------------------------------------------------------------------------------------------------------------------------------------------------------------------------------------------------------------------------------------------------------------------------------------------------------------------------------------------------|
| <b>Catalog No</b>         | BYab-01521                                                                                                                                                                                                                                                                                                                                                                                                                                                                                 |
| <b>Isotype</b>            | IgG                                                                                                                                                                                                                                                                                                                                                                                                                                                                                        |
| <b>Reactivity</b>         | Human;Mouse                                                                                                                                                                                                                                                                                                                                                                                                                                                                                |
| <b>Applications</b>       | WB;IHC;IF;ELISA                                                                                                                                                                                                                                                                                                                                                                                                                                                                            |
| <b>Gene Name</b>          | MLLT10                                                                                                                                                                                                                                                                                                                                                                                                                                                                                     |
| <b>Protein Name</b>       | Protein AF-10                                                                                                                                                                                                                                                                                                                                                                                                                                                                              |
| <b>Immunogen</b>          | The antiserum was produced against synthesized peptide derived from human AF10. AA range:211-260                                                                                                                                                                                                                                                                                                                                                                                           |
| <b>Specificity</b>        | AF-10 Polyclonal Antibody detects endogenous levels of AF-10 protein.                                                                                                                                                                                                                                                                                                                                                                                                                      |
| <b>Formulation</b>        | Liquid in PBS containing 50% glycerol, 0.5% BSA and 0.02% sodium azide.                                                                                                                                                                                                                                                                                                                                                                                                                    |
| <b>Source</b>             | Polyclonal, Rabbit,IgG                                                                                                                                                                                                                                                                                                                                                                                                                                                                     |
| <b>Purification</b>       | The antibody was affinity-purified from rabbit antiserum by affinity-chromatography using epitope-specific immunogen.                                                                                                                                                                                                                                                                                                                                                                      |
| <b>Dilution</b>           | Western Blot: 1/500 - 1/2000. Immunohistochemistry: 1/100 - 1/300. Immunofluorescence: 1/200 - 1/1000. ELISA: 1/10000. Not yet tested in other applications.                                                                                                                                                                                                                                                                                                                               |
| <b>Concentration</b>      | 1 mg/ml                                                                                                                                                                                                                                                                                                                                                                                                                                                                                    |
| <b>Purity</b>             | ≥90%                                                                                                                                                                                                                                                                                                                                                                                                                                                                                       |
| <b>Storage Stability</b>  | -20°C/1 year                                                                                                                                                                                                                                                                                                                                                                                                                                                                               |
| <b>Synonyms</b>           | MLLT10; AF10; Protein AF-10; ALL1-fused gene from chromosome 10 protein                                                                                                                                                                                                                                                                                                                                                                                                                    |
| <b>Observed Band</b>      | 109kD                                                                                                                                                                                                                                                                                                                                                                                                                                                                                      |
| <b>Cell Pathway</b>       | Nucleus .                                                                                                                                                                                                                                                                                                                                                                                                                                                                                  |
| <b>Tissue Specificity</b> | Expressed abundantly in testis.                                                                                                                                                                                                                                                                                                                                                                                                                                                            |
| <b>Function</b>           | disease:A chromosomal aberration involving MLLT10 is associated with acute leukemias. Translocation t(10;11)(p12;q23) with MLL/HRX. The result is a rogue activator protein.,disease:A chromosomal aberration involving MLLT10 is associated with diffuse histiocytic lymphomas. Translocation t(10;11)(p13;q14) with PICALM.,PTM:Phosphorylated upon DNA damage, probably by ATM or ATR.,similarity:Contains 2 PHD-type zinc fingers.,tissue specificity:Expressed abundantly in testis., |
| <b>Background</b>         | myeloid/lymphoid or mixed-lineage leukemia; translocated to, 10(MLLT10) Homo sapiens This gene encodes a transcription factor and has been identified as a                                                                                                                                                                                                                                                                                                                                 |

Nanjing BYabscience technology Co.,Ltd



partner gene involved in several chromosomal rearrangements resulting in various leukemias. Multiple transcript variants encoding different isoforms have been found for this gene. [provided by RefSeq, Sep 2010],

**matters needing attention**

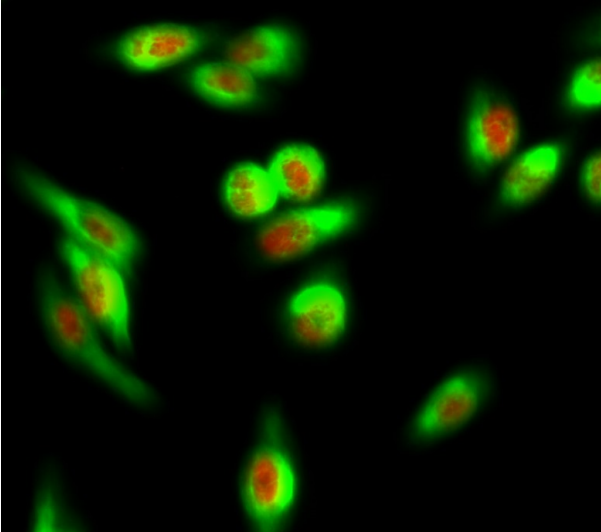
Avoid repeated freezing and thawing!

**Usage suggestions**

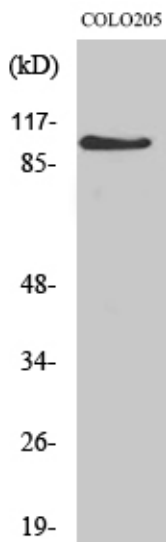
This product can be used in immunological reaction related experiments. For more information, please consult technical personnel.



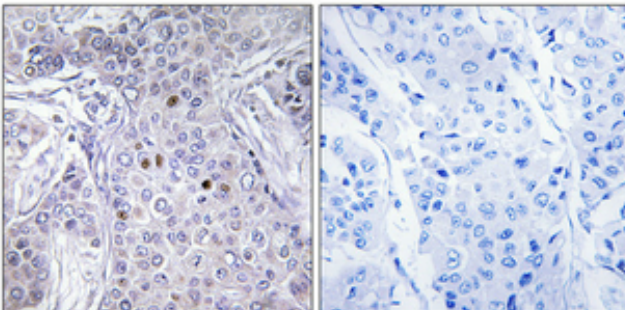
## Products Images



Immunofluorescence analysis of HeLa cell. 1, AF-10 Polyclonal Antibody (red) was diluted at 1:200 (4° overnight). COX IV Monoclonal Antibody (6C8) (green) was diluted at 1:200 (4° overnight). 2, Goat Anti Rabbit Alexa Fluor 594 Catalog: RS3611 was diluted at 1:1000 (room temperature, 50min). Goat Anti Mouse Alexa Fluor 488 Catalog: RS3208 was diluted at 1:1000 (room temperature, 50min).

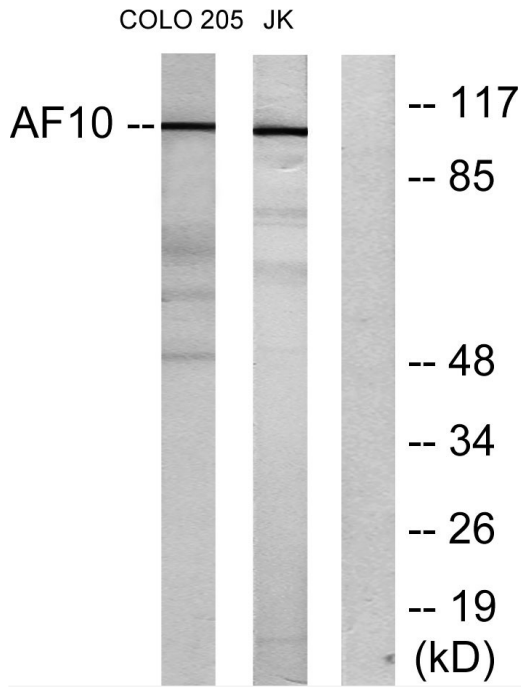


Western Blot analysis of various cells using AF-10 Polyclonal Antibody diluted at 1:1000



Immunohistochemical analysis of paraffin-embedded Human breast cancer. Antibody was diluted at 1:100 (4° overnight). High-pressure and temperature Tris-EDTA, pH 8.0 was used for antigen retrieval. Negative control (right) obtained from antibody was pre-absorbed by immunogen peptide.

Nanjing BYabscience technology Co., Ltd



Western blot analysis of lysates from COLO205 and Jurkat cells, using AF10 Antibody. The lane on the right is blocked with the synthesized peptide.