



# GATA-3 (phospho Ser308) Polyclonal Antibody

<b>Catalog No</b>	BYab-01434
<b>Isotype</b>	IgG
<b>Reactivity</b>	Human;Mouse
<b>Applications</b>	WB;IF;ELISA
<b>Gene Name</b>	GATA3
<b>Protein Name</b>	Trans-acting T-cell-specific transcription factor GATA-3
<b>Immunogen</b>	The antiserum was produced against synthesized peptide derived from human GATA3 around the phosphorylation site of Ser308. AA range:274-323
<b>Specificity</b>	Phospho-GATA-3 (S308) Polyclonal Antibody detects endogenous levels of GATA-3 protein only when phosphorylated at S308.
<b>Formulation</b>	Liquid in PBS containing 50% glycerol, 0.5% BSA and 0.02% sodium azide.
<b>Source</b>	Polyclonal, Rabbit,IgG
<b>Purification</b>	The antibody was affinity-purified from rabbit antiserum by affinity-chromatography using epitope-specific immunogen.
<b>Dilution</b>	Immunofluorescence: 1/200 - 1/1000. ELISA: 1/10000. Not yet tested in other applications.
<b>Concentration</b>	1 mg/ml
<b>Purity</b>	≥90%
<b>Storage Stability</b>	-20°C/1 year
<b>Synonyms</b>	GATA3; Trans-acting T-cell-specific transcription factor GATA-3; GATA-binding factor 3
<b>Observed Band</b>	
<b>Cell Pathway</b>	Nucleus.
<b>Tissue Specificity</b>	T-cells and endothelial cells.
<b>Function</b>	disease:Defects in GATA3 are the cause of hypoparathyroidism with sensorineural deafness and renal dysplasia (HDR) [MIM:146255]; also known as Barakat syndrome.,function:Transcriptional activator which binds to the enhancer of the T-cell receptor alpha and delta genes. Binds to the consensus sequence 5'-AGATAG-3'.,similarity:Contains 2 GATA-type zinc fingers.,tissue specificity:T-cells and endothelial cells.,
<b>Background</b>	This gene encodes a protein which belongs to the GATA family of transcription factors. The protein contains two GATA-type zinc fingers and is an important regulator of T-cell development and plays an important role in endothelial cell

Nanjing BYabscience technology Co.,Ltd



biology. Defects in this gene are the cause of hypoparathyroidism with sensorineural deafness and renal dysplasia. [provided by RefSeq, Nov 2009],

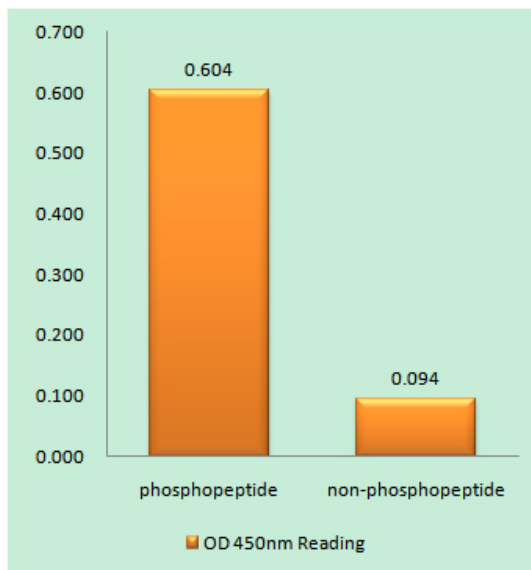
**matters needing attention**

Avoid repeated freezing and thawing!

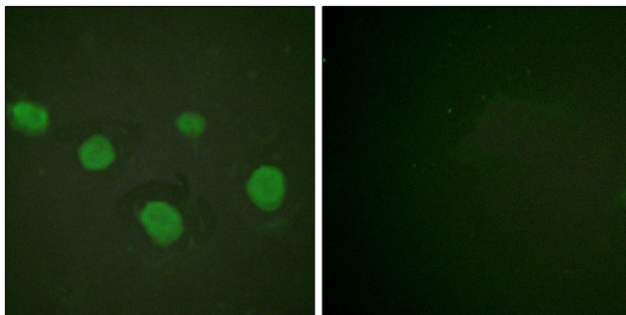
**Usage suggestions**

This product can be used in immunological reaction related experiments. For more information, please consult technical personnel.

## Products Images



Enzyme-Linked Immunosorbent Assay (Phospho-ELISA) for Immunogen Phosphopeptide (Phospho-left) and Non-Phosphopeptide (Phospho-right), using GATA3 (Phospho-Ser308) Antibody



Immunofluorescence analysis of HUVEC cells, using GATA3 (Phospho-Ser308) Antibody. The picture on the right is blocked with the phospho peptide.