



p68 RNA Helicase (phospho Tyr593) Polyclonal Antibody

Catalog No	BYab-01429
Isotype	IgG
Reactivity	Human;Mouse;Rat
Applications	WB;IHC;IF;ELISA
Gene Name	DDX5
Protein Name	Probable ATP-dependent RNA helicase DDX5
Immunogen	The antiserum was produced against synthesized peptide derived from human DDX5/DEAD-box Protein 5 around the phosphorylation site of Tyr593. AA range:565-614
Specificity	Phospho-p68 RNA Helicase (Y593) Polyclonal Antibody detects endogenous levels of p68 RNA Helicase protein only when phosphorylated at Y593.
Formulation	Liquid in PBS containing 50% glycerol, 0.5% BSA and 0.02% sodium azide.
Source	Polyclonal, Rabbit,IgG
Purification	The antibody was affinity-purified from rabbit antiserum by affinity-chromatography using epitope-specific immunogen.
Dilution	Western Blot: 1/500 - 1/2000.Immunohistochemistry: 1/100 - 1/300. Immunofluorescence: 1/200 - 1/1000. ELISA: 1/10000. Not yet tested in other applications.
Concentration	1 mg/ml
Purity	≥90%
Storage Stability	-20°C/1 year
Synonyms	DDX5; G17P1; HELR; HLR1; Probable ATP-dependent RNA helicase DDX5; DEAD box protein 5; RNA helicase p68
Observed Band	
Cell Pathway	Nucleus . Nucleus, nucleolus . Cytoplasm . During the G0 phase, predominantly located in the nucleus. Cytoplasmic levels increase during the G1/S phase. During the M phase, located at the vicinity of the condensed chromosomes. At G1, localizes in the cytoplasm. .
Tissue Specificity	Aorta endothelial cell,Epithelium,Human esophagus tumor,Muscle,
Function	function:RNA-dependent ATPase activity. The rate of ATP hydrolysis is highly stimulated by single-stranded RNA. May be involved in pre-mRNA splicing.,PTM:Arg-502 is dimethylated, probably to asymmetric

Nanjing BYabscience technology Co.,Ltd



dimethylarginine.,similarity:Belongs to the DEAD box helicase family.,similarity:Belongs to the DEAD box helicase family. DDX5/DBP2 subfamily.,similarity:Contains 1 helicase ATP-binding domain.,similarity:Contains 1 helicase C-terminal domain.,subunit:Identified in the spliceosome C complex, at least composed of AQR, C19orf29, CDC40, CDC5L, CRNKL1, DDX23, DDX41, DDX48, DDX5, DGCR14, DHX35, DHX38, DHX8, EFTUD2, FRG1, GPATC1, HNRPA1, HNRPA2B1, HNRPA3, HNRPC, HNRPF, HNRPH1, HNRPK, HNRPM, HNRPR, HNRPU, KIAA1160, KIAA1604, LSM2, LSM3, MAGOH, MORG1, PABPC1, PLRG1, PNN, PPIE, PPIL1, PPIL3, PPWD1, PRPF19, PRPF4B, PRPF6, PRPF8, RALY, RBM22, RBM8A, RBMX, SART1, SF3A1, SF3A2, SF3A3, SF3B1, SF3B2, SF3

Background

DEAD box proteins, characterized by the conserved motif Asp-Glu-Ala-Asp (DEAD), are putative RNA helicases. They are implicated in a number of cellular processes involving alteration of RNA secondary structure, such as translation initiation, nuclear and mitochondrial splicing, and ribosome and spliceosome assembly. Based on their distribution patterns, some members of this family are believed to be involved in embryogenesis, spermatogenesis, and cellular growth and division. This gene encodes a DEAD box protein, which is a RNA-dependent ATPase, and also a proliferation-associated nuclear antigen, specifically reacting with the simian virus 40 tumor antigen. Alternative splicing results in multiple transcript variants. [provided by RefSeq, Feb 2016],

matters needing attention

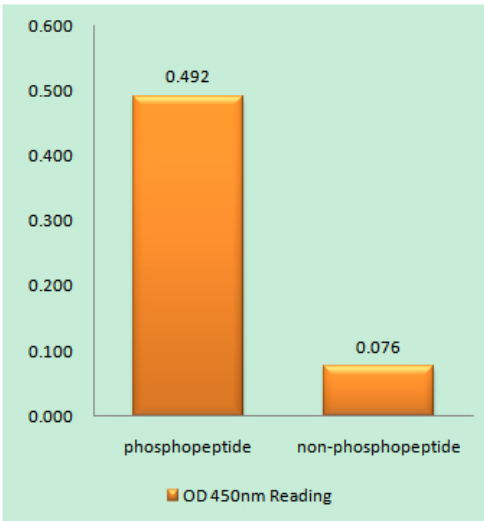
Avoid repeated freezing and thawing!

Usage suggestions

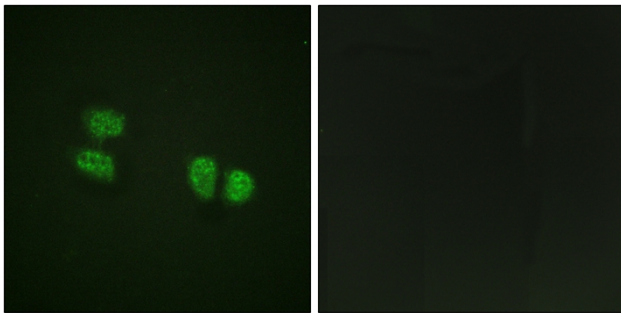
This product can be used in immunological reaction related experiments. For more information, please consult technical personnel.



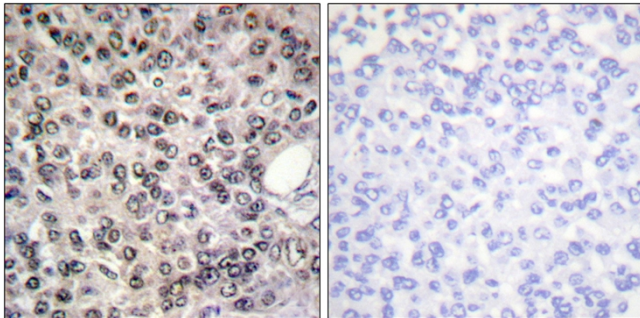
Products Images



Enzyme-Linked Immunosorbent Assay (Phospho-ELISA) for Immunogen Phosphopeptide (Phospho-left) and Non-Phosphopeptide (Phospho-right), using DDX5/DEAD-box Protein 5 (Phospho-Tyr593) Antibody



Immunofluorescence analysis of HeLa cells, using DDX5/DEAD-box Protein 5 (Phospho-Tyr593) Antibody. The picture on the right is blocked with the phospho peptide.



Immunohistochemistry analysis of paraffin-embedded human breast carcinoma, using DDX5/DEAD-box Protein 5 (Phospho-Tyr593) Antibody. The picture on the right is blocked with the phospho peptide.