



# MEF-2C (phospho Ser387) Polyclonal Antibody

<b>Catalog No</b>	BYab-01402
<b>Isotype</b>	IgG
<b>Reactivity</b>	Human;Mouse
<b>Applications</b>	IHC;IF;ELISA
<b>Gene Name</b>	MEF2C
<b>Protein Name</b>	Myocyte-specific enhancer factor 2C
<b>Immunogen</b>	The antiserum was produced against synthesized peptide derived from human MEF2C around the phosphorylation site of Ser387. AA range:353-402
<b>Specificity</b>	Phospho-MEF-2C (S387) Polyclonal Antibody detects endogenous levels of MEF-2C protein only when phosphorylated at S387.
<b>Formulation</b>	Liquid in PBS containing 50% glycerol, 0.5% BSA and 0.02% sodium azide.
<b>Source</b>	Polyclonal, Rabbit,IgG
<b>Purification</b>	The antibody was affinity-purified from rabbit antiserum by affinity-chromatography using epitope-specific immunogen.
<b>Dilution</b>	IHC: 1/100 - 1/300. ELISA: 1/10000.. IF 1:50-200
<b>Concentration</b>	1 mg/ml
<b>Purity</b>	≥90%
<b>Storage Stability</b>	-20°C/1 year
<b>Synonyms</b>	MEF2C; Myocyte-specific enhancer factor 2C
<b>Observed Band</b>	
<b>Cell Pathway</b>	Nucleus . Cytoplasm, sarcoplasm .
<b>Tissue Specificity</b>	Expressed in brain and skeletal muscle.
<b>Function</b>	alternative products:Additional isoforms seem to exist,developmental stage:Expression is highest during the early stages of postnatal development, at later stages levels greatly decrease.,domain:The beta domain, missing in a number of isoforms, is required for enhancement of transcriptional activity.,function:Transcription activator which binds specifically to the MEF2 element present in the regulatory regions of many muscle-specific genes. Controls cardiac morphogenesis and myogenesis, and is also involved in vascular development. May also be involved in neurogenesis and in the development of cortical architecture (By similarity). Isoform 3 and isoform 4, which lack the repressor domain, are more active than isoform 1 and isoform 2.,PTM:Acetylated by p300 on several sites in differentiating myocytes. Acetylation on Lys-4 increases

Nanjing BYabscience technology Co.,Ltd



## DNA binding and transactivation.,PTM:Phosphorylation on Se

### Background

This locus encodes a member of the MADS box transcription enhancer factor 2 (MEF2) family of proteins, which play a role in myogenesis. The encoded protein, MEF2 polypeptide C, has both trans-activating and DNA binding activities. This protein may play a role in maintaining the differentiated state of muscle cells. Mutations and deletions at this locus have been associated with severe mental retardation, stereotypic movements, epilepsy, and cerebral malformation. Alternatively spliced transcript variants have been described. [provided by RefSeq, Jul 2010],

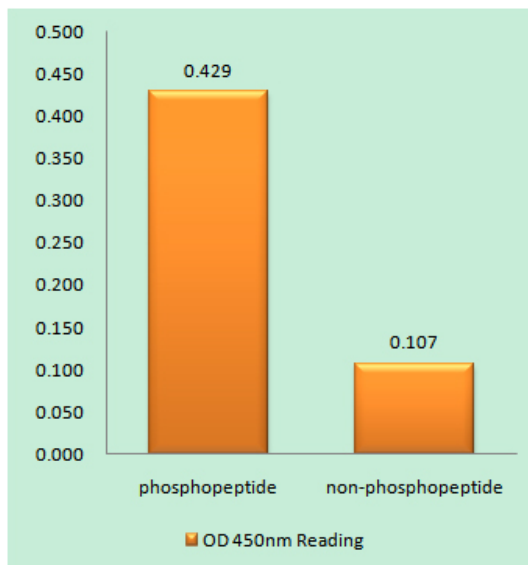
### matters needing attention

Avoid repeated freezing and thawing!

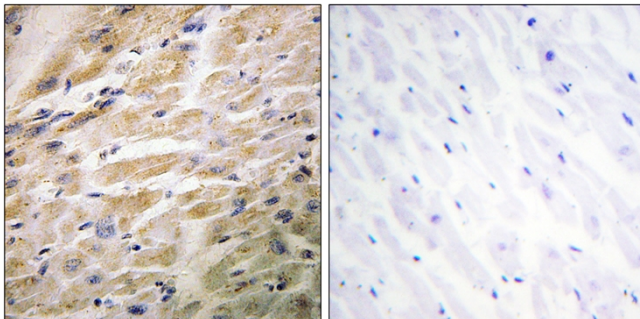
### Usage suggestions

This product can be used in immunological reaction related experiments. For more information, please consult technical personnel.

## Products Images



Enzyme-Linked Immunosorbent Assay (Phospho-ELISA) for Immunogen Phosphopeptide (Phospho-left) and Non-Phosphopeptide (Phospho-right), using MEF2C (Phospho-Ser387) Antibody



Immunohistochemistry analysis of paraffin-embedded human heart, using MEF2C (Phospho-Ser387) Antibody. The picture on the right is blocked with the phospho peptide.

Nanjing BYabscience technology Co.,Ltd