



GATA-1 (phospho Ser142) Polyclonal Antibody

Catalog No	BYab-01401
Isotype	IgG
Reactivity	Human;Mouse;Rat
Applications	WB;IHC;IF;IP;ELISA
Gene Name	GATA1
Protein Name	Erythroid transcription factor
Immunogen	The antiserum was produced against synthesized peptide derived from human GATA1 around the phosphorylation site of Ser142. AA range:109-158
Specificity	Phospho-GATA-1 (S142) Polyclonal Antibody detects endogenous levels of GATA-1 protein only when phosphorylated at S142.
Formulation	Liquid in PBS containing 50% glycerol, 0.5% BSA and 0.02% sodium azide.
Source	Polyclonal, Rabbit,IgG
Purification	The antibody was affinity-purified from rabbit antiserum by affinity-chromatography using epitope-specific immunogen.
Dilution	WB: 1/500 - 1/2000. IHC: 1/100 - 1/300. Immunoprecipitation: 2-5 ug/mg lysate. ELISA: 1/5000.. IF 1:50-200
Concentration	1 mg/ml
Purity	≥90%
Storage Stability	-20°C/1 year
Synonyms	GATA1; ERYF1; GF1; Erythroid transcription factor; Eryf1; GATA-binding factor 1; GATA-1; GF-1; NF-E1 DNA-binding protein
Observed Band	40kD
Cell Pathway	Nucleus.
Tissue Specificity	Erythrocytes.
Function	disease:Defects in GATA1 are the cause of X-linked dyserythropoietic anemia and thrombocytopenia (XDAT) [MIM:300367]. XDAT is a disorder characterized by erythrocytes with abnormal size and shape, and paucity of platelets in peripheral blood. The bone marrow contains abundant and abnormally small megakaryocytes.,disease:Defects in GATA1 are the cause of X-linked thrombocytopenia with beta-thalassemia (XLTT) [MIM:314050]; also called thrombocytopenia, platelet dysfunction, hemolysis, and imbalanced globin synthesis. The disease consists of an unusual form of thrombocytopenia with beta-thalassemia. Patients have splenomegaly and petechiae, moderate thrombocytopenia, prolonged bleeding time due to platelet dysfunction,

Nanjing BYabscience technology Co.,Ltd



reticulocytosis and unbalanced (hemo)globin chain synthesis resembling that of beta-thalassemia minor.,domain:The two fingers are functionally distinct and cooperate to achie

Background

This gene encodes a protein which belongs to the GATA family of transcription factors. The protein plays an important role in erythroid development by regulating the switch of fetal hemoglobin to adult hemoglobin. Mutations in this gene have been associated with X-linked dyserythropoietic anemia and thrombocytopenia. [provided by RefSeq, Jul 2008],

matters needing attention

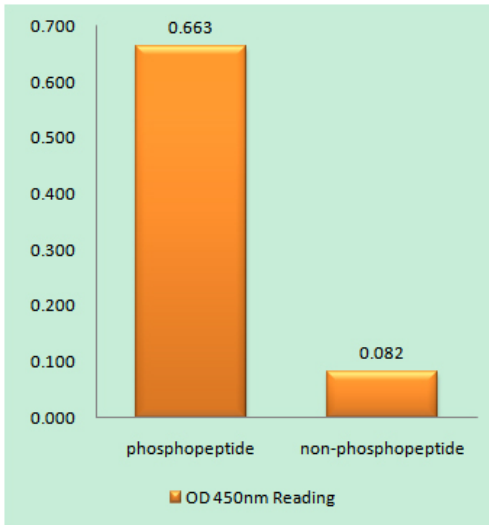
Avoid repeated freezing and thawing!

Usage suggestions

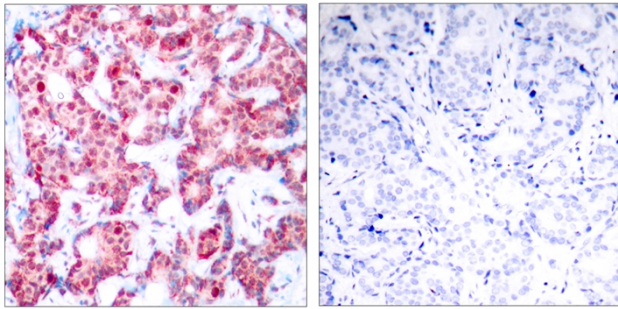
This product can be used in immunological reaction related experiments. For more information, please consult technical personnel.



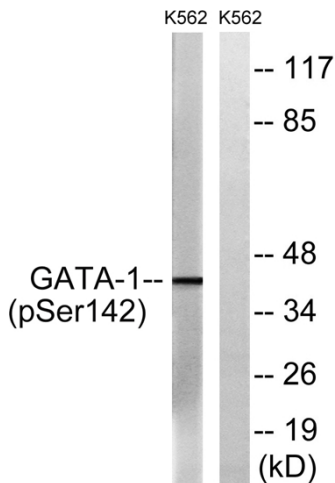
Products Images



Enzyme-Linked Immunosorbent Assay (Phospho-ELISA) for Immunogen Phosphopeptide (Phospho-left) and Non-Phosphopeptide (Phospho-right), using GATA1 (Phospho-Ser142) Antibody



Immunohistochemistry analysis of paraffin-embedded human breast carcinoma, using GATA1 (Phospho-Ser142) Antibody. The picture on the right is blocked with the phospho peptide.



Western blot analysis of lysates from K562 cells, using GATA1 (Phospho-Ser142) Antibody. The lane on the right is blocked with the phospho peptide.

Nanjing BYabscience technology Co.,Ltd