



# Net (phospho Ser357) Polyclonal Antibody

<b>Catalog No</b>	BYab-01394
<b>Isotype</b>	IgG
<b>Reactivity</b>	Human;Mouse;Monkey
<b>Applications</b>	WB;IHC;IF;ELISA
<b>Gene Name</b>	ELK3
<b>Protein Name</b>	ETS domain-containing protein Elk-3
<b>Immunogen</b>	The antiserum was produced against synthesized peptide derived from human Elk3 around the phosphorylation site of Ser357. AA range:323-372
<b>Specificity</b>	Phospho-Net (S357) Polyclonal Antibody detects endogenous levels of Net protein only when phosphorylated at S357.
<b>Formulation</b>	Liquid in PBS containing 50% glycerol, 0.5% BSA and 0.02% sodium azide.
<b>Source</b>	Polyclonal, Rabbit,IgG
<b>Purification</b>	The antibody was affinity-purified from rabbit antiserum by affinity-chromatography using epitope-specific immunogen.
<b>Dilution</b>	Western Blot: 1/500 - 1/2000. Immunohistochemistry: 1/100 - 1/300. Immunofluorescence: 1/200 - 1/1000. ELISA: 1/20000. Not yet tested in other applications.
<b>Concentration</b>	1 mg/ml
<b>Purity</b>	≥90%
<b>Storage Stability</b>	-20°C/1 year
<b>Synonyms</b>	ELK3; NET; SAP2; ETS domain-containing protein Elk-3; ETS-related protein ERP; ETS-related protein NET; Serum response factor accessory protein 2; SAP-2; SRF accessory protein 2
<b>Observed Band</b>	38kD
<b>Cell Pathway</b>	Nucleus.
<b>Tissue Specificity</b>	Brain,Epithelium,Placenta,
<b>Function</b>	function:May be a negative regulator of transcription, but can activate transcription when coexpressed with Ras, Src or Mos. Forms a ternary complex with the serum response factor and the ETS and SRF motifs of the Fos serum response element.,similarity:Belongs to the ETS family.,similarity:Contains 1 ETS DNA-binding domain.,subunit:Interacts with CTBP1.,
<b>Background</b>	This gene encodes a member of the ETS-domain transcription factor family and the ternary complex factor (TCF) subfamily. Proteins in this subfamily regulate

**Nanjing BYabscience technology Co.,Ltd**



transcription when recruited by serum response factor to bind to serum response elements. This protein is activated by signal-induced phosphorylation; studies in rodents suggest that it is a transcriptional inhibitor in the absence of Ras, but activates transcription when Ras is present. Alternate splicing results in multiple transcript variants. [provided by RefSeq, Jan 2015],

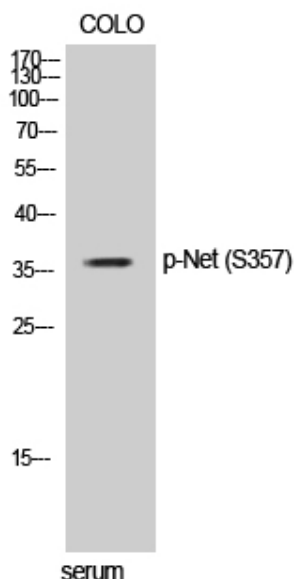
**matters needing attention**

Avoid repeated freezing and thawing!

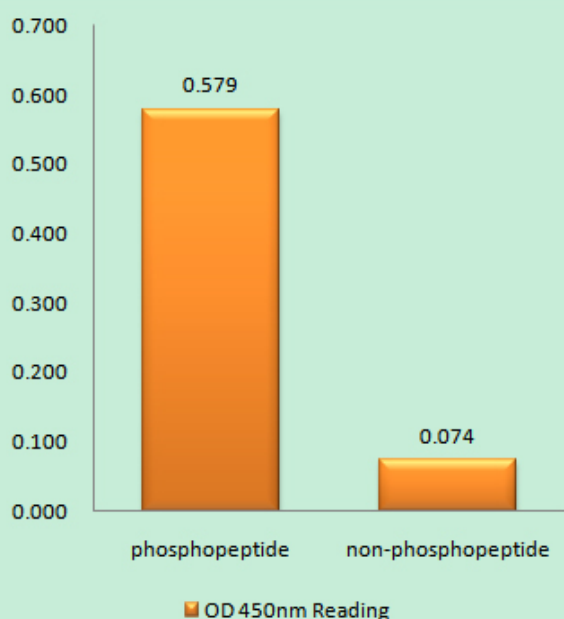
**Usage suggestions**

This product can be used in immunological reaction related experiments. For more information, please consult technical personnel.

**Products Images**

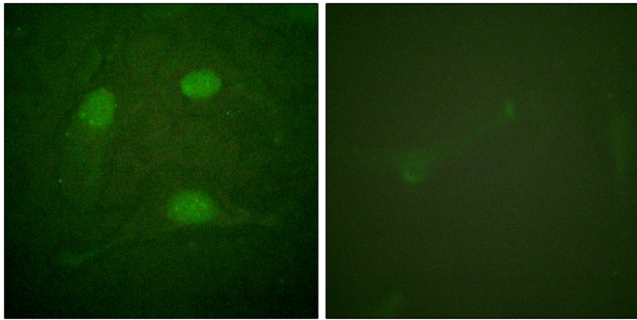


Western Blot analysis of COLO cells using Phospho-Net (S357) Polyclonal Antibody

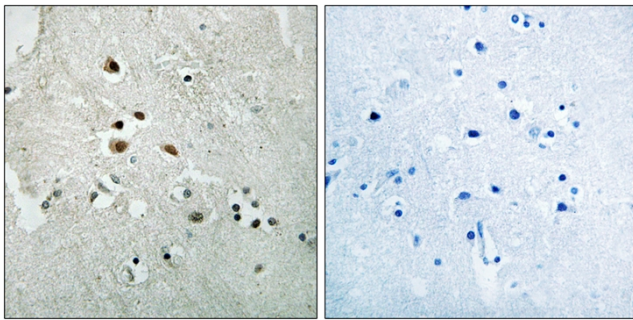


Enzyme-Linked Immunosorbent Assay (Phospho-ELISA) for Immunogen Phosphopeptide (Phospho-left) and Non-Phosphopeptide (Phospho-right), using Elk3 (Phospho-Ser357) Antibody

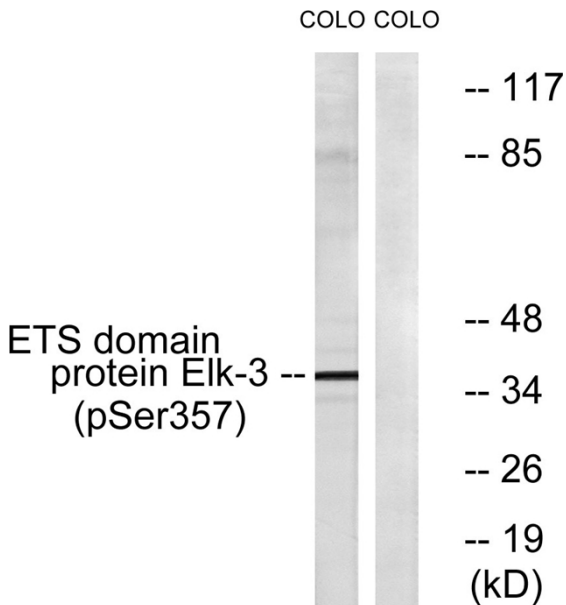
**Nanjing BYabscience technology Co.,Ltd**



Immunofluorescence analysis of HeLa cells, using Elk3 (Phospho-Ser357) Antibody. The picture on the right is blocked with the phospho peptide.



Immunohistochemistry analysis of paraffin-embedded human brain, using Elk3 (Phospho-Ser357) Antibody. The picture on the right is blocked with the phospho peptide.



Western blot analysis of lysates from COLO205 cells treated with serum 20% 15', using Elk3 (Phospho-Ser357) Antibody. The lane on the right is blocked with the phospho peptide.