



Topo II α (phospho Thr1343) Polyclonal Antibody

Catalog No	BYab-01322
Isotype	IgG
Reactivity	Human;Rat;Mouse;
Applications	WB;ELISA
Gene Name	TOP2A
Protein Name	DNA topoisomerase 2-alpha
Immunogen	The antiserum was produced against synthesized peptide derived from human TOP2A around the phosphorylation site of Thr1343. AA range:1311-1360
Specificity	Phospho-Topo II α (T1343) Polyclonal Antibody detects endogenous levels of Topo II α protein only when phosphorylated at T1343.
Formulation	Liquid in PBS containing 50% glycerol, 0.5% BSA and 0.02% sodium azide.
Source	Polyclonal, Rabbit,IgG
Purification	The antibody was affinity-purified from rabbit antiserum by affinity-chromatography using epitope-specific immunogen.
Dilution	Western Blot: 1/500 - 1/2000. ELISA: 1/5000. Not yet tested in other applications.
Concentration	1 mg/ml
Purity	$\geq 90\%$
Storage Stability	-20°C/1 year
Synonyms	TOP2A; TOP2; DNA topoisomerase 2-alpha; DNA topoisomerase II; α isozyme
Observed Band	190kD
Cell Pathway	Cytoplasm . Nucleus, nucleoplasm . Nucleus . Nucleus, nucleolus .
Tissue Specificity	Expressed in the tonsil, spleen, lymph node, thymus, skin, pancreas, testis, colon, kidney, liver, brain and lung (PubMed:9155056). Also found in high-grade lymphomas, squamous cell lung tumors and seminomas (PubMed:9155056).
Function	catalytic activity:ATP-dependent breakage, passage and rejoining of double-stranded DNA.,enzyme regulation:Specifically inhibited by the intercalating agent amsacrine.,function:Control of topological states of DNA by transient breakage and subsequent rejoining of DNA strands. Topoisomerase II makes double-strand breaks.,miscellaneous:Eukaryotic topoisomerase I and II can relax both negative and positive supercoils, whereas prokaryotic enzymes relax only negative supercoils.,PTM:Phosphorylation has no effect on catalytic activity.,similarity:Belongs to the type II topoisomerase family.,subcellular location:Generally located in the nucleoplasm.,subunit:Homodimer. Interacts with

Nanjing BYabscience technology Co.,Ltd



COPS5.,

Background

This gene encodes a DNA topoisomerase, an enzyme that controls and alters the topologic states of DNA during transcription. This nuclear enzyme is involved in processes such as chromosome condensation, chromatid separation, and the relief of torsional stress that occurs during DNA transcription and replication. It catalyzes the transient breaking and rejoining of two strands of duplex DNA which allows the strands to pass through one another, thus altering the topology of DNA. Two forms of this enzyme exist as likely products of a gene duplication event. The gene encoding this form, alpha, is localized to chromosome 17 and the beta gene is localized to chromosome 3. The gene encoding this enzyme functions as the target for several anticancer agents and a variety of mutations in this gene have been associated with the development of drug resistance. Reduced activity of this enzyme may also pla

matters needing attention

Avoid repeated freezing and thawing!

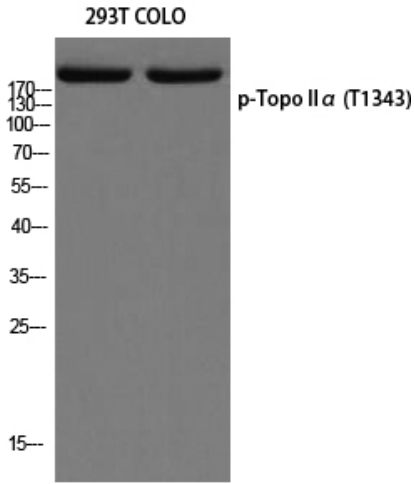
Usage suggestions

This product can be used in immunological reaction related experiments. For more information, please consult technical personnel.

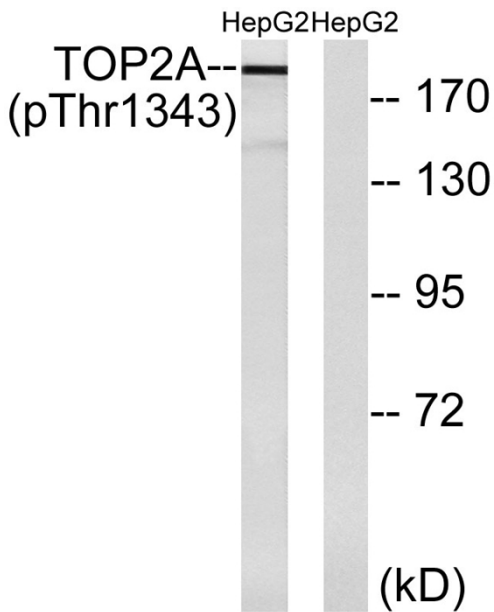
Nanjing BYabscience technology Co.,Ltd



Products Images



Western blot analysis of 293T COLO using p-Topo II α (T1343) antibody. Antibody was diluted at 1:2000



Western blot analysis of lysates from HepG2 cells treated with Ca²⁺ 40nM 30', using TOP2A (Phospho-Thr1343) Antibody. The lane on the right is blocked with the phospho peptide.