



# MITF (phospho Ser180) Polyclonal Antibody

<b>Catalog No</b>	BYab-01295
<b>Isotype</b>	IgG
<b>Reactivity</b>	Human;Mouse;Monkey
<b>Applications</b>	WB;IHC;IF;ELISA
<b>Gene Name</b>	MITF
<b>Protein Name</b>	Microphthalmia-associated transcription factor
<b>Immunogen</b>	The antiserum was produced against synthesized peptide derived from human MITF around the phosphorylation site of Ser180/73. AA range:151-200
<b>Specificity</b>	Phospho-MITF (S180) Polyclonal Antibody detects endogenous levels of MITF protein only when phosphorylated at S180.
<b>Formulation</b>	Liquid in PBS containing 50% glycerol, 0.5% BSA and 0.02% sodium azide.
<b>Source</b>	Polyclonal, Rabbit,IgG
<b>Purification</b>	The antibody was affinity-purified from rabbit antiserum by affinity-chromatography using epitope-specific immunogen.
<b>Dilution</b>	WB: 1/500 - 1/2000. IHC: 1/100 - 1/300. ELISA: 1/10000.. IF 1:50-200
<b>Concentration</b>	1 mg/ml
<b>Purity</b>	≥90%
<b>Storage Stability</b>	-20°C/1 year
<b>Synonyms</b>	MITF; BHLHE32; Microphthalmia-associated transcription factor; Class E basic helix-loop-helix protein 32; bHLHe32
<b>Observed Band</b>	52kD
<b>Cell Pathway</b>	Nucleus . Cytoplasm . Found exclusively in the nucleus upon phosphorylation. .
<b>Tissue Specificity</b>	Expressed in melanocytes (at protein level). ; [Isoform A2]: Expressed in the retinal pigment epithelium, brain, and placenta (PubMed:9647758). Expressed in the kidney (PubMed:9647758, PubMed:10578055). ; [Isoform C2]: Expressed in the kidney and retinal pigment epithelium. ; [Isoform H1]: Expressed in the kidney. ; [Isoform H2]: Expressed in the kidney. ; [Isoform M1]: Expressed in melanocytes. ; [Isoform Mdel]: Expressed in melanocytes.
<b>Function</b>	alternative products:The X2-type isoforms differ from the X1-type isoforms by the absence of a 6 residue insert,disease:Defects in MITF are a cause of Waardenburg syndrome type 2 with ocular albinism (WS2-OA) [MIM:103470]. It is an ocular albinism with sensorineural deafness.,disease:Defects in MITF are the cause of Tietz syndrome [MIM:103500]. It is an autosomal dominant disorder characterized by generalized hypopigmentation and profound, congenital,

Nanjing BYabscience technology Co.,Ltd



bilateral deafness. Penetrance is complete.,disease:Defects in MITF are the cause of Waardenburg syndrome type 2A (WS2A) [MIM:193510]. It is a dominant inherited disorder characterized by sensorineural hearing loss and patches of depigmentation. The features show variable expression and penetrance.,function:Transcription factor for tyrosinase and tyrosinase-related protein 1. Binds to a symmetrical DNA sequence (E-boxes) (5'-CACGTG-3') four

**Background**

This gene encodes a transcription factor that contains both basic helix-loop-helix and leucine zipper structural features. It regulates the differentiation and development of melanocytes retinal pigment epithelium and is also responsible for pigment cell-specific transcription of the melanogenesis enzyme genes. Heterozygous mutations in the this gene cause auditory-pigmentary syndromes, such as Waardenburg syndrome type 2 and Tietz syndrome. Alternatively spliced transcript variants encoding different isoforms have been identified. [provided by RefSeq, Jul 2008],

**matters needing attention**

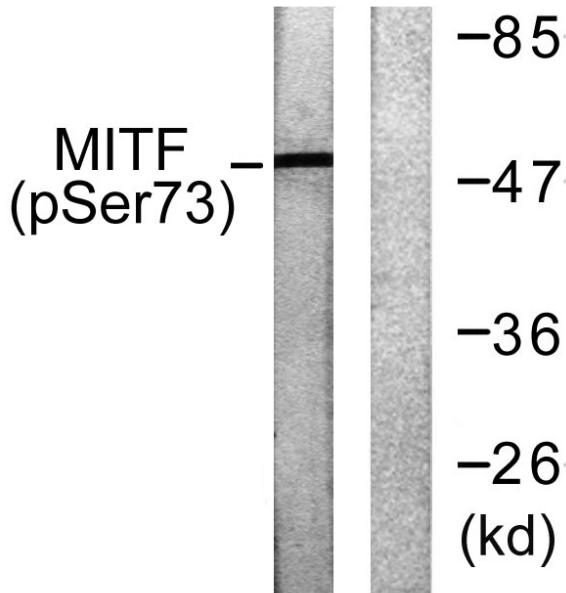
Avoid repeated freezing and thawing!

**Usage suggestions**

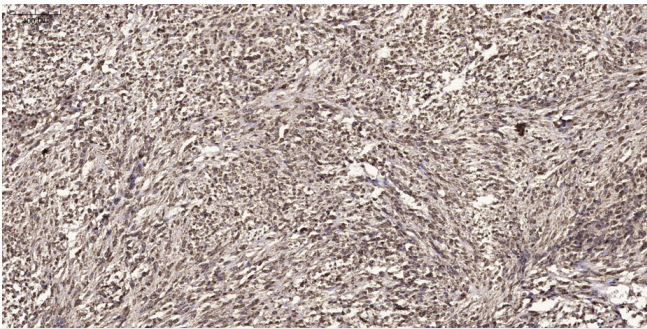
This product can be used in immunological reaction related experiments. For more information, please consult technical personnel.



## Products Images



Western blot analysis of lysates from COS7 cells, using MITF (Phospho-Ser180/73) Antibody. The lane on the right is blocked with the phospho peptide.



Immunohistochemical analysis of paraffin-embedded human small intestinal carcinoma tissue. 1, primary Antibody was diluted at 1:200 (4° overnight). 2, Sodium citrate pH 6.0 was used for antigen retrieval (>98° C, 20min). 3, Secondary antibody was diluted at 1:200