



Stat5a (phospho Ser780) Polyclonal Antibody

Catalog No	BYab-01282
Isotype	IgG
Reactivity	Human;Mouse;Rat
Applications	WB;IHC;IF;IP;ELISA
Gene Name	STAT5A
Protein Name	Signal transducer and activator of transcription 5A
Immunogen	The antiserum was produced against synthesized peptide derived from human STAT5A around the phosphorylation site of Ser780. AA range:745-794
Specificity	Phospho-Stat5a (S780) Polyclonal Antibody detects endogenous levels of Stat5a protein only when phosphorylated at S780.
Formulation	Liquid in PBS containing 50% glycerol, 0.5% BSA and 0.02% sodium azide.
Source	Polyclonal, Rabbit,IgG
Purification	The antibody was affinity-purified from rabbit antiserum by affinity-chromatography using epitope-specific immunogen.
Dilution	WB: 1/500 - 1/2000. IHC: 1/100 - 1/300. Immunoprecipitation: 2-5 ug/mg lysate. ELISA: 1/10000.. IF 1:50-200
Concentration	1 mg/ml
Purity	≥90%
Storage Stability	-20°C/1 year
Synonyms	STAT5A; STAT5; Signal transducer and activator of transcription 5A
Observed Band	91kD
Cell Pathway	Cytoplasm . Nucleus . Translocated into the nucleus in response to phosphorylation.
Tissue Specificity	Brain,Cervix,Epithelium,Lung,Placenta,Synovial memb
Function	function:Carries out a dual function: signal transduction and activation of transcription. Binds to the GAS element and activates PRL-induced transcription.,online information:STAT5 entry,PTM:Tyrosine phosphorylated in response to IL-2, IL-3, IL-7, IL-15, GM-CSF, growth hormone, prolactin, erythropoietin and thrombopoietin. Tyrosine phosphorylation is required for DNA-binding activity and dimerization. Serine phosphorylation is also required for maximal transcriptional activity.,similarity:Belongs to the transcription factor STAT family.,similarity:Contains 1 SH2 domain.,subcellular location:Translocated into the nucleus in response to phosphorylation.,subunit:Forms a homodimer or a heterodimer with a related family member. Binds NR3C1 (By similarity). Interacts

Nanjing BYabscience technology Co.,Ltd



with NCOA1 and SOCS7.,

Background

The protein encoded by this gene is a member of the STAT family of transcription factors. In response to cytokines and growth factors, STAT family members are phosphorylated by the receptor associated kinases, and then form homo- or heterodimers that translocate to the cell nucleus where they act as transcription activators. This protein is activated by, and mediates the responses of many cell ligands, such as IL2, IL3, IL7 GM-CSF, erythropoietin, thrombopoietin, and different growth hormones. Activation of this protein in myeloma and lymphoma associated with a TEL/JAK2 gene fusion is independent of cell stimulus and has been shown to be essential for tumorigenesis. The mouse counterpart of this gene is found to induce the expression of BCL2L1/BCL-X(L), which suggests the antiapoptotic function of this gene in cells. Alternatively spliced transcript variants have been

matters needing attention

Avoid repeated freezing and thawing!

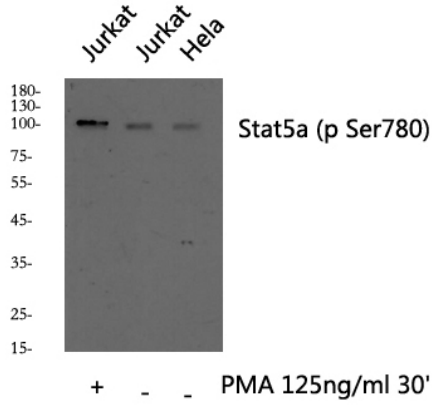
Usage suggestions

This product can be used in immunological reaction related experiments. For more information, please consult technical personnel.

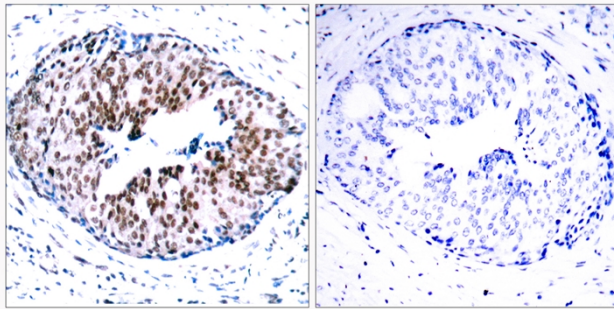
Nanjing BYabscience technology Co.,Ltd



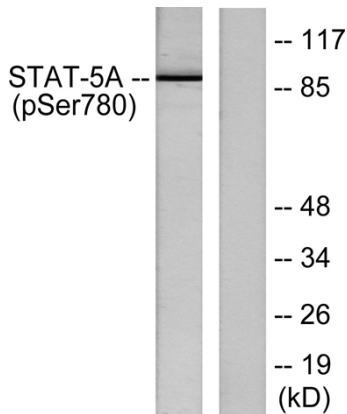
Products Images



Western blot analysis of Stat5a (phospho Ser780) Polyclonal Antibody, using HeLa, Jurkat cell treated or untreated with PMA 125ng/ml 30', 4° overnight, secondary antibody (cat: RS0002 was diluted at 1:10000, 37° 1hour).



Immunohistochemistry analysis of paraffin-embedded human breast carcinoma, using STAT5A (Phospho-Ser780) Antibody. The picture on the right is blocked with the phospho peptide.



Western blot analysis of lysates from HeLa cells, using STAT5A (Phospho-Ser780) Antibody. The lane on the right is blocked with the phospho peptide.

Nanjing BYabscience technology Co.,Ltd