



MEF-2D (phospho Ser444) Polyclonal Antibody

Catalog No	BYab-01261
Isotype	IgG
Reactivity	Human;Mouse;Rat
Applications	WB;IHC;IF;ELISA
Gene Name	MEF2D
Protein Name	Myocyte-specific enhancer factor 2D
Immunogen	The antiserum was produced against synthesized peptide derived from human MEF2D around the phosphorylation site of Ser444. AA range:410-459
Specificity	Phospho-MEF-2D (S444) Polyclonal Antibody detects endogenous levels of MEF-2D protein only when phosphorylated at S444.
Formulation	Liquid in PBS containing 50% glycerol, 0.5% BSA and 0.02% sodium azide.
Source	Polyclonal, Rabbit,IgG
Purification	The antibody was affinity-purified from rabbit antiserum by affinity-chromatography using epitope-specific immunogen.
Dilution	WB: 1/500 - 1/2000. IHC: 1/100 - 1/300. ELISA: 1/10000.. IF 1:50-200
Concentration	1 mg/ml
Purity	≥90%
Storage Stability	-20°C/1 year
Synonyms	MEF2D; Myocyte-specific enhancer factor 2D
Observed Band	55kD
Cell Pathway	Nucleus . Translocated by HDAC4 to nuclear dots.
Tissue Specificity	Blood,Brain,Epithelium,Eye,Myocardium,Testis,
Function	developmental stage:Present in myotubes and also in undifferentiated myoblasts.,domain:The beta domain, missing in a number of isoforms, is required for enhancement of transcriptional activity.,function:Transcriptional activator which binds specifically to the MEF2 element, 5'-YTA[AT](4)TAR-3', found in numerous muscle-specific, growth factor- and stress-induced genes. Mediates cellular functions not only in skeletal and cardiac muscle development, but also in neuronal differentiation and survival. Plays diverse roles in the control of cell growth, survival and apoptosis via p38 MAPK signaling in muscle-specific and/or growth factor-related transcription. Plays a critical role in the regulation of neuronal apoptosis.,PTM:Acetylated on Lys-439 by CREBBP. Deacetylated by SIRT1.,PTM:Phosphorylated on Ser-444 by CDK5 is required for Lys-439

Nanjing BYabscience technology Co.,Ltd



sumoylation and inhibits transcriptional activity.

Background

This gene is a member of the myocyte-specific enhancer factor 2 (MEF2) family of transcription factors. Members of this family are involved in control of muscle and neuronal cell differentiation and development, and are regulated by class II histone deacetylases. Fusions of the encoded protein with Deleted in Azoospermia-Associated Protein 1 (DAZAP1) due to a translocation have been found in an acute lymphoblastic leukemia cell line, suggesting a role in leukemogenesis. The encoded protein may also be involved in Parkinson disease and myotonic dystrophy. Alternative splicing results in multiple transcript variants. [provided by RefSeq, Oct 2012],

matters needing attention

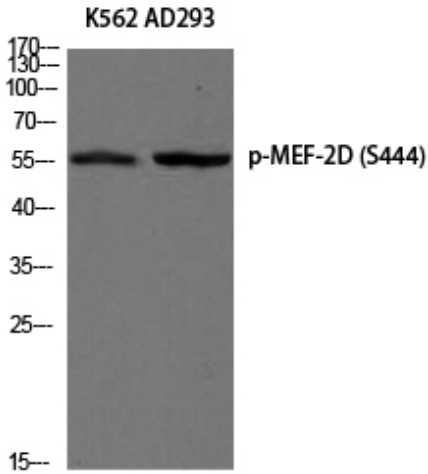
Avoid repeated freezing and thawing!

Usage suggestions

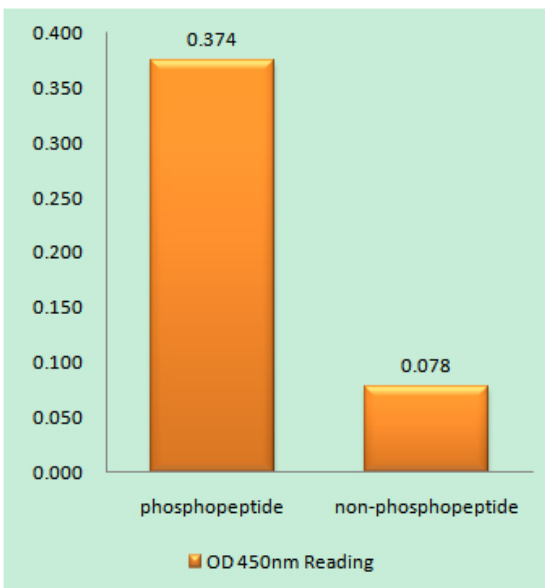
This product can be used in immunological reaction related experiments. For more information, please consult technical personnel.



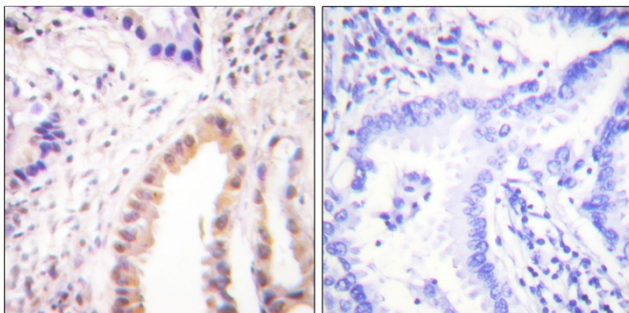
Products Images



Western blot analysis of K562 AD293 using Phospho-MEF-2D (S444) antibody. Antibody was diluted at 1:500

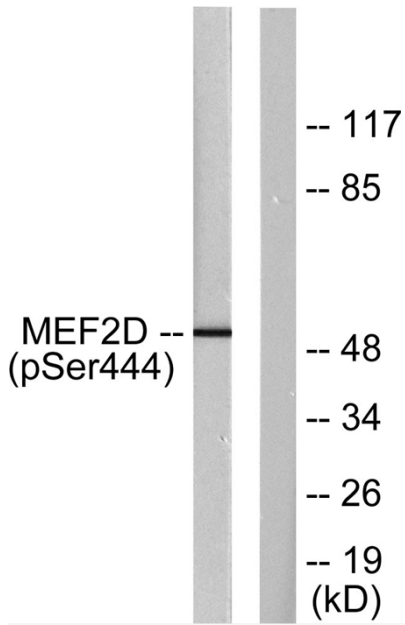


Enzyme-Linked Immunosorbent Assay (Phospho-ELISA) for Immunogen Phosphopeptide (Phospho-left) and Non-Phosphopeptide (Phospho-right), using MEF2D (Phospho-Ser444) Antibody



Immunohistochemistry analysis of paraffin-embedded human lung carcinoma, using MEF2D (Phospho-Ser444) Antibody. The picture on the right is blocked with the phospho peptide.

Nanjing BYabscience technology Co.,Ltd



Western blot analysis of lysates from HepG2 cells treated with forskolin 40nM 30', using MEF2D (Phospho-Ser444) Antibody. The lane on the right is blocked with the phospho peptide.