



IκB-α (phospho Ser32/S36) Polyclonal Antibody

Catalog No	BYab-01253
Isotype	IgG
Reactivity	Human;Mouse;Rat;Monkey
Applications	WB;IHC;IF;ELISA
Gene Name	NFKBIA IKBA MAD3 NFKBI
Protein Name	NF-kappa-B inhibitor alpha
Immunogen	The antiserum was produced against synthesized peptide derived from human IκappaB-alpha around the phosphorylation site of Ser32/Ser36. AA range:15-64
Specificity	Phospho-IκB-α (S32/S36) Polyclonal Antibody detects endogenous levels of IκB-α protein only when phosphorylated at S32/S36.
Formulation	Liquid in PBS containing 50% glycerol, 0.5% BSA and 0.02% sodium azide.
Source	Polyclonal, Rabbit,IgG
Purification	The antibody was affinity-purified from rabbit antiserum by affinity-chromatography using epitope-specific immunogen.
Dilution	Western Blot: 1/500 - 1/2000. Immunohistochemistry: 1/100 - 1/300. Immunofluorescence: 1/200 - 1/1000. ELISA: 1/10000. Not yet tested in other applications.
Concentration	1 mg/ml
Purity	≥90%
Storage Stability	-20°C/1 year
Synonyms	NFKBIA; IKBA; MAD3; NFKBI; NF-kappa-B inhibitor alpha; I-kappa-B-alpha; IκB-alpha; IκappaBalpha; Major histocompatibility complex enhancer-binding protein MAD3
Observed Band	about 40kd
Cell Pathway	Cytoplasm. Nucleus. Shuttles between the nucleus and the cytoplasm by a nuclear localization signal (NLS) and a CRM1-dependent nuclear export. .
Tissue Specificity	Brain,Kidney,Lymph node,Monocyte,
Function	disease:Defects in NFKBIA are the cause of ectodermal dysplasia anhidrotic with T-cell immunodeficiency autosomal dominant (AEDAID) [MIM:612132]. Ectodermal dysplasia defines a heterogeneous group of disorders due to abnormal development of two or more ectodermal structures. AEDAID is an ectodermal dysplasia associated with decreased production of pro-inflammatory cytokines and certain interferons, rendering patients susceptible to infection.,function:Inhibits the activity of dimeric NF-kappa-B/REL complexes by

Nanjing BYabscience technology Co.,Ltd



trapping REL dimers in the cytoplasm through masking of their nuclear localization signals. On cellular stimulation by immune and proinflammatory responses, becomes phosphorylated promoting ubiquitination and degradation, enabling the dimeric RELA to translocate to the nucleus and activate transcription., induction: Induced in adherent monocytes., online information: NFKBIA mutation

Background

This gene encodes a member of the NF-kappa-B inhibitor family, which contain multiple ankrin repeat domains. The encoded protein interacts with REL dimers to inhibit NF-kappa-B/REL complexes which are involved in inflammatory responses. The encoded protein moves between the cytoplasm and the nucleus via a nuclear localization signal and CRM1-mediated nuclear export. Mutations in this gene have been found in ectodermal dysplasia anhidrotic with T-cell immunodeficiency autosomal dominant disease. [provided by RefSeq, Aug 2011],

matters needing attention

Avoid repeated freezing and thawing!

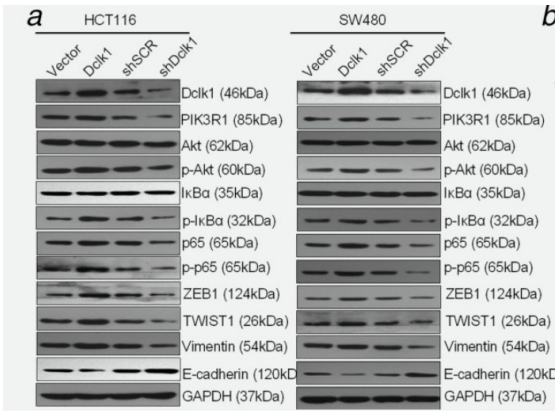
Usage suggestions

This product can be used in immunological reaction related experiments. For more information, please consult technical personnel.

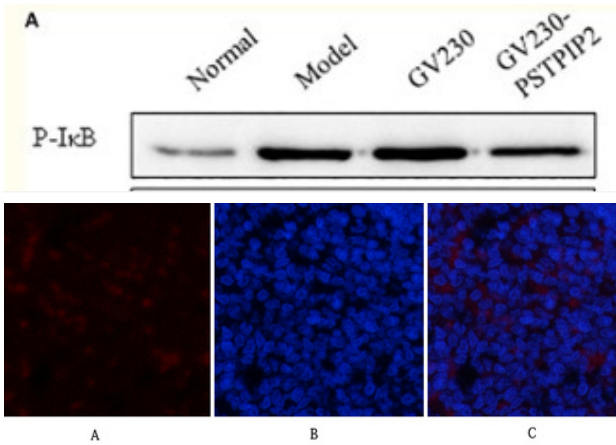
Nanjing BYabscience technology Co.,Ltd



Products Images

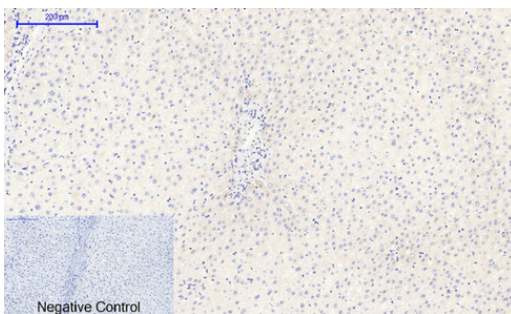


Liu, Weiyang, et al. "DCLK1 promotes epithelial-mesenchymal transition via the PI3K/Akt/NF- κ B pathway in colorectal cancer." *International journal of cancer* 142.10 (2018): 2068-2079.

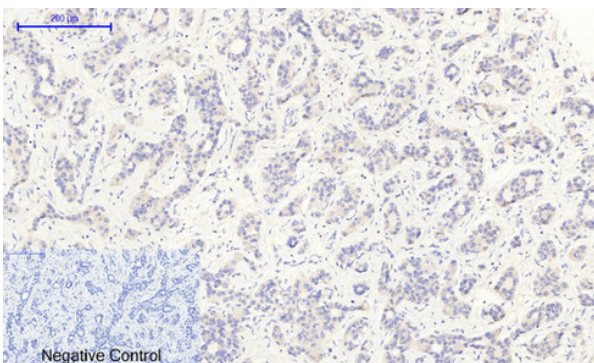


Yao, Yao, et al. "PSTPIP2 inhibits the inflammatory response and proliferation of fibroblast-like synoviocytes in vitro." *Frontiers in pharmacology* 9 (2018): 1432.

Immunofluorescence analysis of rat-spleen tissue. 1, I κ B- α (phospho Ser32/S36) Polyclonal Antibody (red) was diluted at 1:200 (4°C, overnight). 2, Cy3 labeled Secondary antibody was diluted at 1:300 (room temperature, 50min). 3, Picture B: DAPI (blue) 10min. Picture A: Target. Picture B: DAPI. Picture C: merge of A+B



Immunohistochemical analysis of paraffin-embedded Human-liver tissue. 1, I κ B- α (phospho Ser32/S36) Polyclonal Antibody was diluted at 1:200 (4°C, overnight). 2, Sodium citrate pH 6.0 was used for antibody retrieval (>98°C, 20min). 3, Secondary antibody was diluted at 1:200 (room temperature, 30min). Negative control was used by secondary antibody only.



Immunohistochemical analysis of paraffin-embedded Human-liver-cancer tissue. 1, I κ B- α (phospho Ser32/S36) Polyclonal Antibody was diluted at 1:200 (4°C, overnight). 2, Sodium citrate pH 6.0 was used for antibody retrieval (>98°C, 20min). 3, Secondary antibody was diluted at 1:200 (room temperature, 30min). Negative control was used by secondary antibody only.

Nanjing BYabscience technology Co.,Ltd