



AP-1/Jun D (phospho Ser73/100) Polyclonal Antibody

Catalog No	BYab-01221
Isotype	IgG
Reactivity	Human;Mouse;Rat
Applications	WB;IHC;IF;ELISA
Gene Name	JUN/JUND
Protein Name	Transcription factor AP-1;jun;c-jun; AP-1; Transcription factor jun-D
Immunogen	The antiserum was produced against synthesized peptide derived from human c-Jun around the phosphorylation site of Ser73. AA range:40-89
Specificity	Phospho-AP-1 (S73) Polyclonal Antibody detects endogenous levels of AP-1 protein only when phosphorylated at S73.
Formulation	Liquid in PBS containing 50% glycerol, 0.5% BSA and 0.02% sodium azide.
Source	Polyclonal, Rabbit,IgG
Purification	The antibody was affinity-purified from rabbit antiserum by affinity-chromatography using epitope-specific immunogen.
Dilution	WB: 1/500 - 1/2000. IHC: 1/100 - 1/300. ELISA: 1/10000.. IF 1:50-200
Concentration	1 mg/ml
Purity	≥90%
Storage Stability	-20°C/1 year
Synonyms	JUN; Transcription factor AP-1; Activator protein 1; AP1; Proto-oncogene c-Jun; V-jun avian sarcoma virus 17 oncogene homolog; p39; JUND; Transcription factor jun-D
Observed Band	39-42kD
Cell Pathway	Nucleus.
Tissue Specificity	Expressed in the developing and adult prostate and prostate cancer cells.
Function	function:Transcription factor that recognizes and binds to the enhancer heptamer motif 5'-TGA[CG]TCA-3'.,PTM:Phosphorylation enhances the transcriptional activity. Phosphorylated by PRKDC.,similarity:Belongs to the bZIP family.,similarity:Belongs to the bZIP family. Jun subfamily.,similarity:Contains 1 bZIP domain.,subunit:Heterodimer with either FOS or BATF3. Interacts with HIVEP3 (By similarity). Interacts with SMAD3/SMAD4 heterodimers. Interacts with MYBBP1A, SPIB and TCF20. Interacts with COPS5; indirectly leading to its phosphorylation. Interacts with DSIPI; this interaction inhibits the binding of active AP1 to its target DNA.,

Nanjing BYabscience technology Co.,Ltd



Background

This gene is the putative transforming gene of avian sarcoma virus 17. It encodes a protein which is highly similar to the viral protein, and which interacts directly with specific target DNA sequences to regulate gene expression. This gene is intronless and is mapped to 1p32-p31, a chromosomal region involved in both translocations and deletions in human malignancies. [provided by RefSeq, Jul 2008],

matters needing attention

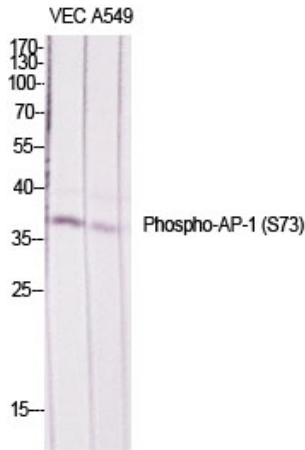
Avoid repeated freezing and thawing!

Usage suggestions

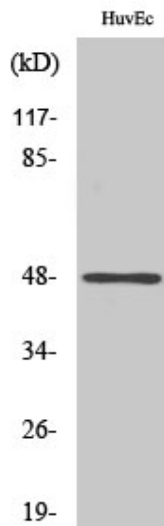
This product can be used in immunological reaction related experiments. For more information, please consult technical personnel.



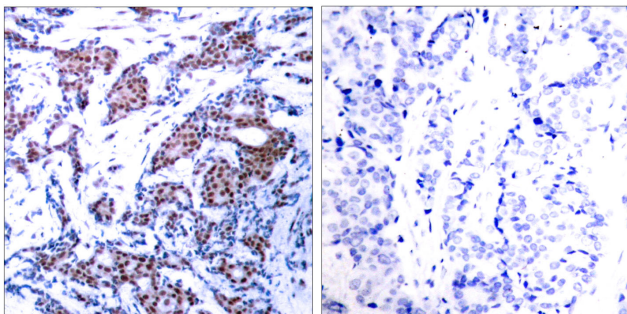
Products Images



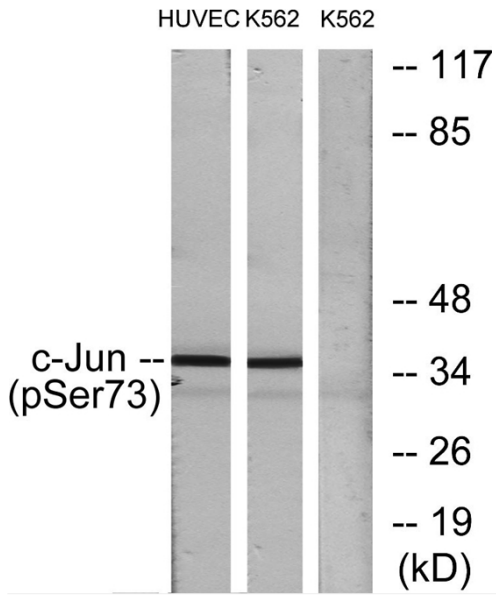
Western Blot analysis of various cells using Phospho-AP-1/Jun D (S73/100) Polyclonal Antibody diluted at 1:1000



Western Blot analysis of HuvEc cells using Phospho-AP-1/Jun D (S73/100) Polyclonal Antibody diluted at 1:1000



Immunohistochemistry analysis of paraffin-embedded human breast carcinoma, using c-Jun (Phospho-Ser73) Antibody. The picture on the right is blocked with the phospho peptide.



Western blot analysis of lysates from HUVEC cells treated with TNF 20ng/ml 5' and K562 cells treated with TNF 20ng/ml 5', using c-Jun (Phospho-Ser73) Antibody. The lane on the right is blocked with the phospho peptide.