



CACNG3 Polyclonal Antibody

| | |
|---------------------------|---|
| Catalog No | BYab-01216 |
| Isotype | IgG |
| Reactivity | Human;Mouse;Rat |
| Applications | WB;IHC;IF |
| Gene Name | CACNG3 |
| Protein Name | Voltage-dependent calcium channel gamma-3 subunit |
| Immunogen | Synthetic Peptide of CACNG3 AA range: 84-134 |
| Specificity | The antibody detects endogenous CACNG3 protein. |
| Formulation | PBS, pH 7.4, containing 0.5%BSA, 0.02% sodium azide as Preservative and 50% Glycerol. |
| Source | Polyclonal, Rabbit,IgG |
| Purification | The antibody was affinity-purified from rabbit antiserum by affinity-chromatography using epitope-specific immunogen. |
| Dilution | WB: 1:1000-2000 IHC: 1:200-500. IF 1:50-200 |
| Concentration | 1 mg/ml |
| Purity | ≥90% |
| Storage Stability | -20°C/1 year |
| Synonyms | Voltage-dependent calcium channel gamma-3 subunit; Neuronal voltage-gated calcium channel gamma-3 subunit; Transmembrane AMPAR regulatory protein gamma-3; TARP gamma-3 |
| Observed Band | 30kD |
| Cell Pathway | Membrane ; Multi-pass membrane protein . Displays a somatodendritic localization and is excluded from axons in neurons. . |
| Tissue Specificity | Brain,Brain cortex,Cerebellum, |
| Function | disease:Candidate gene for a familial infantile convulsive disorder with paroxysmal choreoathetosis.,function:Thought to stabilize the calcium channel in an inactivated (closed) state.,similarity:Belongs to the PMP-22/EMP/MP20 family. CACNG subfamily.,subunit:The L-type calcium channel is composed of five subunits: alpha-1, alpha-2/delta, beta and gamma., |
| Background | calcium voltage-gated channel auxiliary subunit gamma 3(CACNG3) Homo sapiens The protein encoded by this gene is a type I transmembrane AMPA receptor regulatory protein (TARP). TARPs regulate both trafficking and channel |

Nanjing BYabscience technology Co.,Ltd



gating of the AMPA receptors. This gene is part of a functionally diverse eight-member protein subfamily of the PMP-22/EMP/MP20 family. This gene is a susceptibility locus for childhood absence epilepsy. [provided by RefSeq, Dec 2010],

matters needing attention

Avoid repeated freezing and thawing!

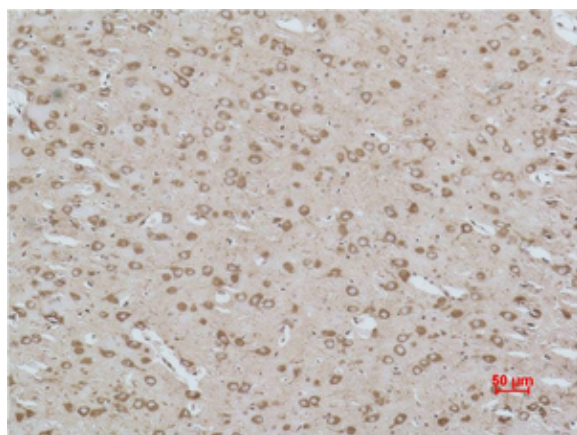
Usage suggestions

This product can be used in immunological reaction related experiments. For more information, please consult technical personnel.

Products Images



Western blot analysis of 1) Human Brain Tissue, 2) Mouse Brain Tissue, 3) Rat Brain Tissue using CACNG3 Polyclonal Antibody. Secondary antibody(catalog#:RS0002) was diluted at 1:20000



Immunohistochemical analysis of paraffin-embedded Rat Brain Tissue using CACNG3 Polyclonal Antibody.