



# CALHM1 Polyclonal Antibody

<b>Catalog No</b>	BYab-01215
<b>Isotype</b>	IgG
<b>Reactivity</b>	Human;Rat
<b>Applications</b>	WB;IHC;IF
<b>Gene Name</b>	CALHM1
<b>Protein Name</b>	Calcium homeostasis modulator protein 1
<b>Immunogen</b>	Synthetic Peptide of CALHM1 AA range: 204-254
<b>Specificity</b>	The antibody detects endogenous CALHM1 protein.
<b>Formulation</b>	PBS, pH 7.4, containing 0.5%BSA, 0.02% sodium azide as Preservative and 50% Glycerol.
<b>Source</b>	Polyclonal, Rabbit,IgG
<b>Purification</b>	The antibody was affinity-purified from rabbit antiserum by affinity-chromatography using epitope-specific immunogen.
<b>Dilution</b>	WB: 1:500-1000 IHC: 1:200-500. IF 1:50-200
<b>Concentration</b>	1 mg/ml
<b>Purity</b>	≥90%
<b>Storage Stability</b>	-20°C/1 year
<b>Synonyms</b>	Calcium homeostasis modulator protein 1; Protein FAM26C
<b>Observed Band</b>	40kD
<b>Cell Pathway</b>	Cell membrane; Multi-pass membrane protein . Endoplasmic reticulum membrane ; Multi-pass membrane protein. Basolateral cell membrane; Multi-pass membrane protein . Colocalizes with HSPA5 at the endoplasmic reticulum (PubMed:18585350). Localizes to the basolateral membrane of epithelial cells including taste cells (By similarity). .
<b>Tissue Specificity</b>	Predominantly expressed in adult brain. Detected also in retinoic acid-differentiated SH-SY5Y cells. Specifically expressed in circumvallate taste bud cells.
<b>Function</b>	function:May be a pore-forming ion channel. Controls cytosolic Ca(2+) permeability and cytosolic Ca(2+) concentration. Controls amyloid precursor protein (APP) proteolysis and aggregated amyloid-beta (Abeta) peptides levels in a Ca(2+) dependent manner.,polymorphism:Leu-86 causes a dysregulation of Ca(2+) homeostasis and amyloid precursor protein (APP) metabolism, and may be a risk factor for the development of Alzheimer's disease.,similarity:Belongs to the FAM26 family.,subcellular location:Colocalizes with HSPA5 at the

Nanjing BYabscience technology Co.,Ltd



endoplasmic reticulum.,subunit:Homooligomer; homomultimerized to form dimeric and possibly tetrameric structures.,tissue specificity:Predominantly expressed in adult brain. Detected also in retinoic acid-differentiated SH-SY5Y cells.,

**Background**

calcium homeostasis modulator 1(CALHM1) Homo sapiens This gene encodes a calcium channel that plays a role in processing of amyloid-beta precursor protein. A polymorphism at this locus has been reported to be associated with susceptibility to late-onset Alzheimer's disease in some populations, but the pathogenicity of this polymorphism is unclear.[provided by RefSeq, Mar 2010],

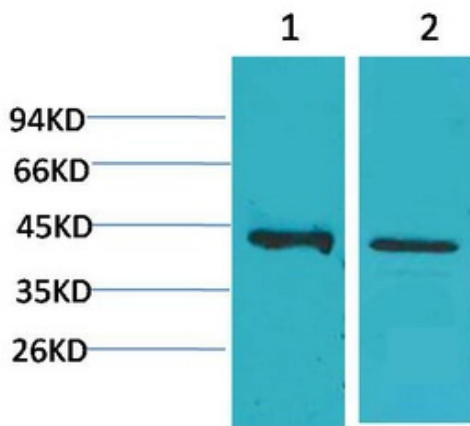
**matters needing attention**

Avoid repeated freezing and thawing!

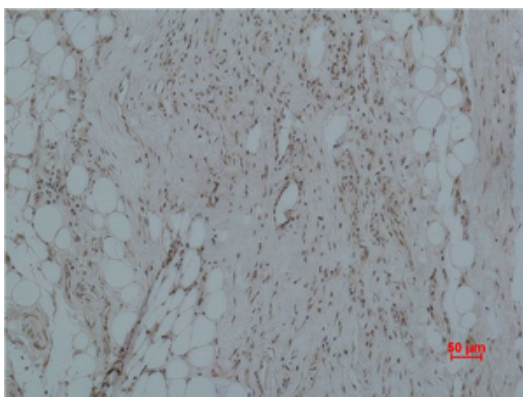
**Usage suggestions**

This product can be used in immunological reaction related experiments. For more information, please consult technical personnel.

**Products Images**



Western blot analysis of 1) Human Brain Tissue, 2) Rat Brain Tissue using CALHM1 Polyclonal Antibody. Secondary antibody(catalog#:RS0002) was diluted at 1:20000



Immunohistochemical analysis of paraffin-embedded Human Hepatocarcinoma using CALHM1 Polyclonal Antibody.

**Nanjing BYabscience technology Co.,Ltd**