



eEF1A2 binding protein Polyclonal Antibody

Catalog No	BYab-01212
Isotype	IgG
Reactivity	Human;Rat;Mouse;Pig
Applications	WB;IHC;IF
Gene Name	IGFN1
Protein Name	Immunoglobulin-like and fibronectin type III domain-containing protein 1 (EEF1A2-binding protein 1) (KY-interacting protein 1)
Immunogen	Recombinant Protein of eEF1A2 binding protein
Specificity	The antibody detects endogenous eEF1A2 binding protein protein
Formulation	Liquid in PBS containing 50% glycerol, 0.5% BSA and 0.02% sodium azide.
Source	Polyclonal, Rabbit,IgG
Purification	The antibody was affinity-purified from rabbit antiserum by affinity-chromatography using epitope-specific immunogen.
Dilution	WB: 1:500-1:2000 IHC: 1:50-1:200. IF 1:50-200
Concentration	1 mg/ml
Purity	≥90%
Storage Stability	-20°C/1 year
Synonyms	Immunoglobulin-like and fibronectin type III domain-containing protein 1 (EEF1A2-binding protein 1;KY-interacting protein 1)
Observed Band	115kD
Cell Pathway	Nucleus . Cytoplasm, myofibril, sarcomere, Z line .
Tissue Specificity	Expressed in skeletal muscle.
Function	similarity:Contains 4 fibronectin type-III domains.,similarity:Contains 5 Ig-like (immunoglobulin-like) domains.,subunit:Interacts with KY.,tissue specificity:Expressed in skeletal muscle.,
Background	similarity:Contains 4 fibronectin type-III domains.,similarity:Contains 5 Ig-like (immunoglobulin-like) domains.,subunit:Interacts with KY.,tissue specificity:Expressed in skeletal muscle.,
matters needing attention	Avoid repeated freezing and thawing!

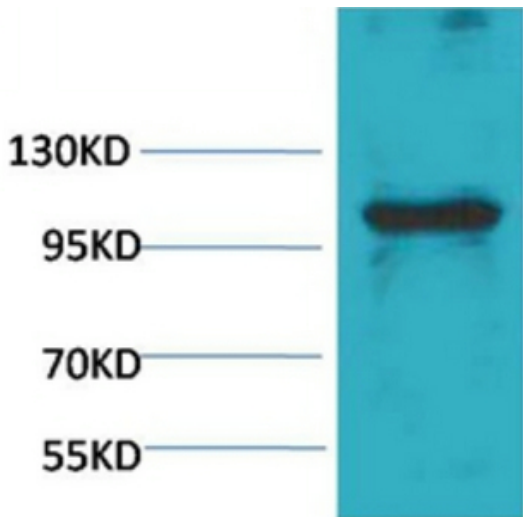
Nanjing BYabscience technology Co.,Ltd



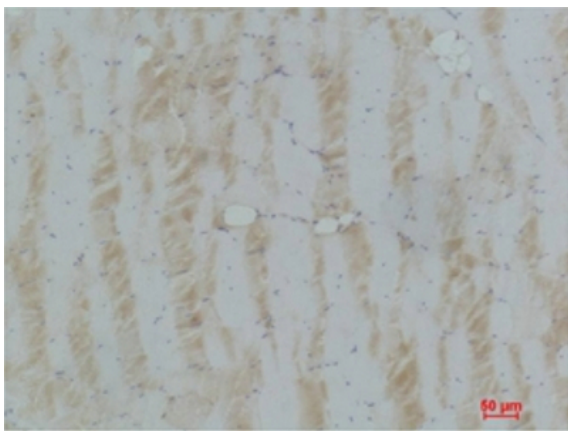
Usage suggestions

This product can be used in immunological reaction related experiments. For more information, please consult technical personnel.

Products Images



Western blot analysis of Pig Skeletal Muscle with eEF1A2 Rabbit pAb diluted at 1:1,000



Immunohistochemical analysis of paraffin-embedded Pig Skeletal Muscle using eEF1A2 Rabbit pAb diluted at 1:100