



# IGFN1 Polyclonal Antibody

<b>Catalog No</b>	BYab-01204
<b>Isotype</b>	IgG
<b>Reactivity</b>	Human;Mouse;Rat
<b>Applications</b>	WB;IHC;IF
<b>Gene Name</b>	IGFN1
<b>Protein Name</b>	Immunoglobulin-like and fibronectin type III domain-containing protein 1
<b>Immunogen</b>	Recombinant Protein of IGFN1
<b>Specificity</b>	The antibody detects endogenous IGFN1 protein.
<b>Formulation</b>	PBS, pH 7.4, containing 0.5%BSA, 0.02% sodium azide as Preservative and 50% Glycerol.
<b>Source</b>	Polyclonal, Rabbit,IgG
<b>Purification</b>	The antibody was affinity-purified from rabbit antiserum by affinity-chromatography using epitope-specific immunogen.
<b>Dilution</b>	WB: 1:2000-5000 IHC: 1:200-500. IF 1:50-200
<b>Concentration</b>	1 mg/ml
<b>Purity</b>	≥90%
<b>Storage Stability</b>	-20°C/1 year
<b>Synonyms</b>	Immunoglobulin-like and fibronectin type III domain-containing protein 1; EEF1A2-binding protein 1; KY-interacting protein 1
<b>Observed Band</b>	115kD
<b>Cell Pathway</b>	Nucleus . Cytoplasm, myofibril, sarcomere, Z line .
<b>Tissue Specificity</b>	Expressed in skeletal muscle.
<b>Function</b>	similarity:Contains 4 fibronectin type-III domains.,similarity:Contains 5 Ig-like (immunoglobulin-like) domains.,subunit:Interacts with KY.,tissue specificity:Expressed in skeletal muscle.,
<b>Background</b>	similarity:Contains 4 fibronectin type-III domains.,similarity:Contains 5 Ig-like (immunoglobulin-like) domains.,subunit:Interacts with KY.,tissue specificity:Expressed in skeletal muscle.,
<b>matters needing attention</b>	Avoid repeated freezing and thawing!

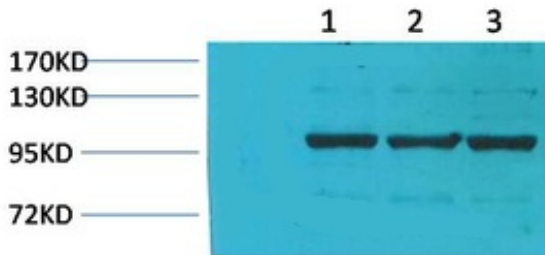
Nanjing BYabscience technology Co.,Ltd



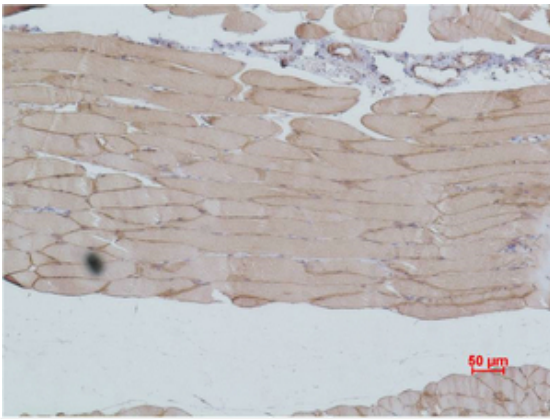
### Usage suggestions

This product can be used in immunological reaction related experiments. For more information, please consult technical personnel.

## Products Images



Western blot analysis of 1) Pig Skeletal Muscle Tissue, 2) Rat Skeletal Muscle Tissue, 3) Rat Skeletal Muscle Tissue using IGFN1 Polyclonal Antibody. Secondary antibody (catalog#:RS0002) was diluted at 1:20000



Immunohistochemical analysis of paraffin-embedded Mouse Skeletal Muscle Tissue using IGFN1 Polyclonal Antibody.