



SLC12A4 Polyclonal Antibody

Catalog No	BYab-01193
Isotype	IgG
Reactivity	Human;Rat;Mouse
Applications	WB;IHC;IF
Gene Name	SLC12A4
Protein Name	Solute carrier family 12 member 4 (Electroneutral potassium-chloride cotransporter 1) (Erythroid K-Cl cotransporter 1) (hKCC1)
Immunogen	Synthetic Peptide of SLC12A4 AA range: 658-708
Specificity	SLC12A4 protein(A248) detects endogenous levels of SLC12A4
Formulation	Liquid in PBS containing 50% glycerol, 0.5% BSA and 0.02% sodium azide.
Source	Polyclonal, Rabbit,IgG
Purification	The antibody was affinity-purified from rabbit antiserum by affinity-chromatography using specific immunogen.
Dilution	WB 1:1000-2000, IHC 1:100-200. IF 1:50-200
Concentration	1 mg/ml
Purity	≥90%
Storage Stability	-20°C/1 year
Synonyms	Solute carrier family 12 member 4 (Electroneutral potassium-chloride cotransporter 1;Erythroid K-Cl cotransporter 1;hKCC1)
Observed Band	150kD
Cell Pathway	Membrane; Multi-pass membrane protein.
Tissue Specificity	Ubiquitous. Levels are much higher in erythrocytes from patients with Hb SC and Hb SS compared to normal AA erythrocytes. This may contribute to red blood cell dehydration and to the manifestation of sickle cell disease by increasing the intracellular concentration of HbS. Isoform 1 was not detected in circulating reticulocytes.
Function	alternative products:Experimental confirmation may be lacking for some isoforms,function:Mediates electroneutral potassium-chloride cotransport when activated by cell swelling. May contribute to cell volume homeostasis in single cells. May be involved in the regulation of basolateral Cl(-) exit in NaCl absorbing epithelia (By similarity). Isoform 4 has no transport activity.,PTM:N-glycosylated.,similarity:Belongs to the SLC12A transporter family.,subunit:Homomultimer and heteromultimer with other K-Cl cotransporters.,tissue specificity:Ubiquitous. Levels are much higher in

Nanjing BYabscience technology Co.,Ltd



erythrocytes from patients with Hb SC and Hb SS compared to normal AA erythrocytes. This may contribute to red blood cell dehydration and to the manifestation of sickle cell disease by increasing the intracellular concentration of HbS. Isoform 1 was not detected in circulating reticulocytes.,

Background

This gene encodes a member of the SLC12A transporter family. The encoded protein mediates the coupled movement of potassium and chloride ions across the plasma membrane. This gene is expressed ubiquitously. Multiple alternatively spliced transcript variants encoding distinct isoforms have been found for this gene. [provided by RefSeq, Jan 2013],

matters needing attention

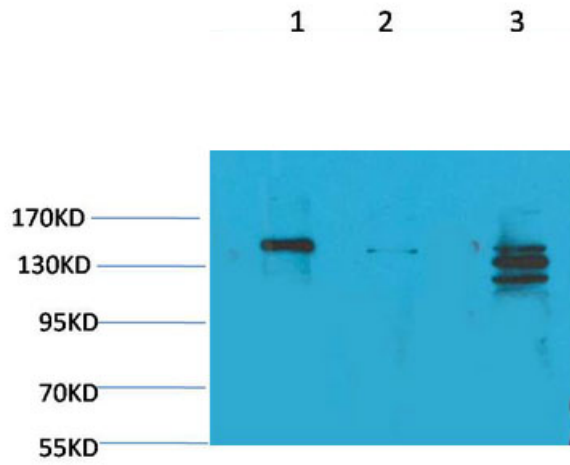
Avoid repeated freezing and thawing!

Usage suggestions

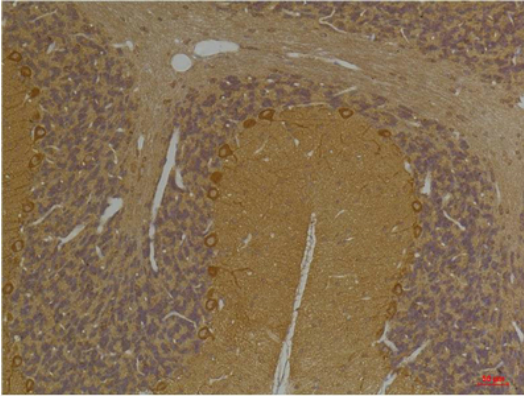
This product can be used in immunological reaction related experiments. For more information, please consult technical personnel.



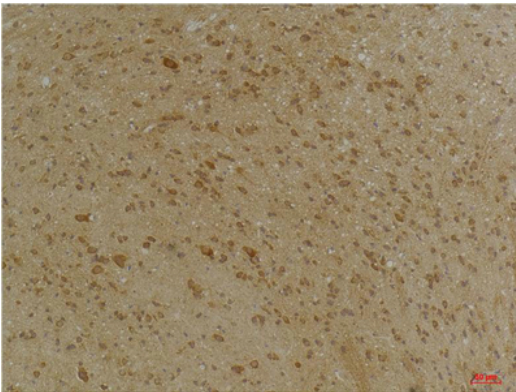
Products Images



Western blot analysis of 1) Rat Brain Tissue, 2) Mouse Brain Tissue, 3) HeLa with SLC12A4 Rabbit pAb diluted at 1:2,000.



Immunohistochemical analysis of paraffin-embedded Rat Brain Tissue using SLC12A4 Rabbit pAb diluted at 1:200.



Immunohistochemical analysis of paraffin-embedded Mouse Brain Tissue using SLC12A4 Rabbit pAb diluted at 1:200.