



LRRFIP1 Monoclonal Antibody

Catalog No	BYab-01045
Isotype	IgG
Reactivity	Human
Applications	WB
Gene Name	LRRFIP1
Protein Name	Leucine-rich repeat flightless-interacting protein 1
Immunogen	Purified recombinant human LRRFIP1 protein fragments expressed in E.coli.
Specificity	LRRFIP1 Monoclonal Antibody detects endogenous levels of LRRFIP1 protein.
Formulation	Purified mouse monoclonal in buffer containing 0.1M Tris-Glycine (pH 7.4, 150 mM NaCl) with 0.2% sodium azide, 50% glycerol.
Source	Monoclonal, Mouse
Purification	Affinity purification
Dilution	Western Blot: 1/1000 - 1/2000. Not yet tested in other applications.
Concentration	1 mg/ml
Purity	≥90%
Storage Stability	-20°C/1 year
Synonyms	LRRFIP1; GCF2; TRIP; Leucine-rich repeat flightless-interacting protein 1; LRR FLII-interacting protein 1; GC-binding factor 2; TAR RNA-interacting protein
Observed Band	
Cell Pathway	Nucleus. Cytoplasm.
Tissue Specificity	Ubiquitously expressed.
Function	developmental stage:Widely expressed in fetal tissues.,function:Transcriptional repressor which preferentially binds to the GC-rich consensus sequence (5'-AGCCCCCGGCG-3') and may regulate expression of TNF, EGFR and PDGFA. May control smooth muscle cells proliferation following artery injury through PDGFA repression. May also bind double-stranded RNA.,sequence caution:Contaminating sequence. Potential poly-A sequence.,similarity:Belongs to the LRRFIP family.,subunit:Interacts with FLII.,tissue specificity:Ubiquitously expressed.,
Background	developmental stage:Widely expressed in fetal tissues.,function:Transcriptional repressor which preferentially binds to the GC-rich consensus sequence (5'-AGCCCCCGGCG-3') and may regulate expression of TNF, EGFR and

Nanjing BYabscience technology Co.,Ltd



PDGFA. May control smooth muscle cells proliferation following artery injury through PDGFA repression. May also bind double-stranded RNA.,sequence caution:Contaminating sequence. Potential poly-A sequence.,similarity:Belongs to the LRRFIP family.,subunit:Interacts with FLII.,tissue specificity:Ubiquitously expressed.,

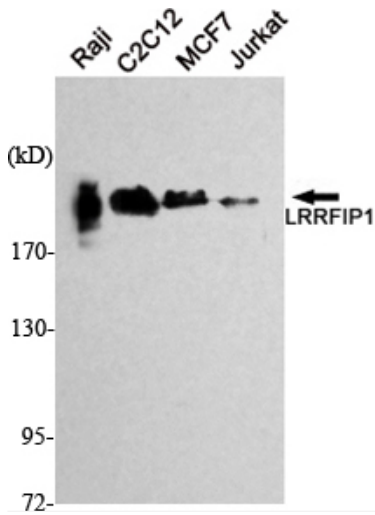
matters needing attention

Avoid repeated freezing and thawing!

Usage suggestions

This product can be used in immunological reaction related experiments. For more information, please consult technical personnel.

Products Images



Western Blot analysis using LRRFIP1 Monoclonal Antibody against Raji, C2C12, MCF7, Jurkat cell lysate.