



SNAI 1 Monoclonal Antibody

Catalog No	BYab-01021
Isotype	IgG
Reactivity	Human
Applications	WB;ELISA
Gene Name	SNAI1
Protein Name	Zinc finger protein SNAI1(snail)
Immunogen	Purified recombinant fragment of human SNAI 1 expressed in E. Coli.
Specificity	SNAI 1 Monoclonal Antibody detects endogenous levels of SNAI 1 protein.
Formulation	Ascitic fluid containing 0.03% sodium azide,0.5% BSA, 50%glycerol.
Source	Monoclonal, Mouse
Purification	Affinity purification
Dilution	Western Blot: 1/500 - 1/2000. ELISA: 1/10000. Not yet tested in other applications.
Concentration	1 mg/ml
Purity	≥90%
Storage Stability	-20°C/1 year
Synonyms	SNAI1; SNAH; Zinc finger protein SNAI1; Protein snail homolog 1; Protein sna
Observed Band	
Cell Pathway	Nucleus . Cytoplasm . Once phosphorylated (probably on Ser-107, Ser-111, Ser-115 and Ser-119) it is exported from the nucleus to the cytoplasm where subsequent phosphorylation of the destruction motif and ubiquitination involving BTRC occurs. .
Tissue Specificity	Expressed in a variety of tissues with the highest expression in kidney. Expressed in mesenchymal and epithelial cell lines.
Function	function:Seems to be involved in embryonic mesoderm formation. Binds to 3 E-boxes of the E-cadherin gene promoter and represses its transcription.,similarity:Belongs to the snail C2H2-type zinc-finger protein family.,similarity:Contains 4 C2H2-type zinc fingers.,tissue specificity:Expressed in a variety of tissues with the highest expression in kidney.,
Background	snail family transcriptional repressor 1(SNAI1) Homo sapiens The Drosophila embryonic protein snail is a zinc finger transcriptional repressor which downregulates the expression of ectodermal genes within the mesoderm. The nuclear protein encoded by this gene is structurally similar to the Drosophila snail protein, and is also thought to be critical for mesoderm formation in the developing

Nanjing BYabscience technology Co.,Ltd



embryo. At least two variants of a similar processed pseudogene have been found on chromosome 2. [provided by RefSeq, Jul 2008],

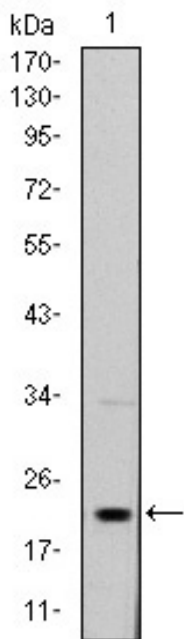
matters needing attention

Avoid repeated freezing and thawing!

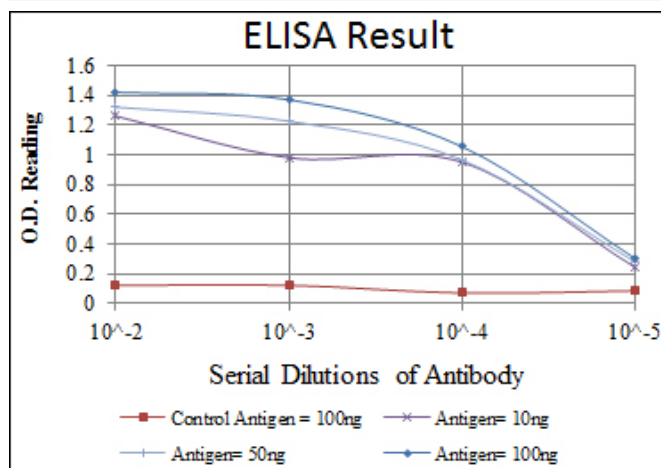
Usage suggestions

This product can be used in immunological reaction related experiments. For more information, please consult technical personnel.

Products Images



Western Blot analysis using SNAI 1 Monoclonal Antibody against NTERA-2 cell lysate.



Nanjing BYabscience technology Co.,Ltd