



Msi1 Monoclonal Antibody

Catalog No	BYab-01004
Isotype	IgG
Reactivity	Human
Applications	WB;FCM;ELISA
Gene Name	MSI1
Protein Name	RNA-binding protein Musashi homolog 1
Immunogen	Purified recombinant fragment of human Msi1 expressed in E. Coli.
Specificity	Msi1 Monoclonal Antibody detects endogenous levels of Msi1 protein.
Formulation	Ascitic fluid containing 0.03% sodium azide,0.5% BSA, 50%glycerol.
Source	Monoclonal, Mouse
Purification	Affinity purification
Dilution	Western Blot: 1/500 - 1/2000. Flow cytometry: 1/200 - 1/400. ELISA: 1/10000. Not yet tested in other applications.
Concentration	1 mg/ml
Purity	≥90%
Storage Stability	-20°C/1 year
Synonyms	MSI1; RNA-binding protein Musashi homolog 1; Musashi-1
Observed Band	
Cell Pathway	Cytoplasm . Nucleus .
Tissue Specificity	Detected in fetal kidney, brain, liver and lung, and in adult brain and pancreas. Detected in hepatoma cell lines.
Function	domain:The first RNA recognition motif binds more strongly to RNA compared to the second one.,function:RNA binding protein that regulates the expression of target mRNAs at the translation level. Regulates expression of the NOTCH1 antagonist NUMB. Binds RNA containing the sequence 5'-GUUAGUUAGUUAGUU-3' and other sequences containing the pattern 5'-[GA]U(1-3)AGU-3'. May play a role in the proliferation and maintenance of stem cells in the central nervous system.,similarity:Belongs to the Musashi family.,similarity:Contains 2 RRM (RNA recognition motif) domains.,tissue specificity:Detected in fetal kidney, brain, liver and lung, and in adult brain and pancreas. Detected in hepatoma cell lines.,
Background	This gene encodes a protein containing two conserved tandem RNA recognition motifs. Similar proteins in other species function as RNA-binding proteins and play

Nanjing BYabscience technology Co.,Ltd



central roles in posttranscriptional gene regulation. Expression of this gene has been correlated with the grade of the malignancy and proliferative activity in gliomas and melanomas. A pseudogene for this gene is located on chromosome 11q13. [provided by RefSeq, Jul 2008],

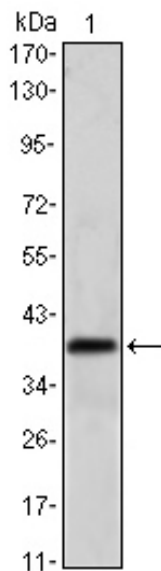
matters needing attention

Avoid repeated freezing and thawing!

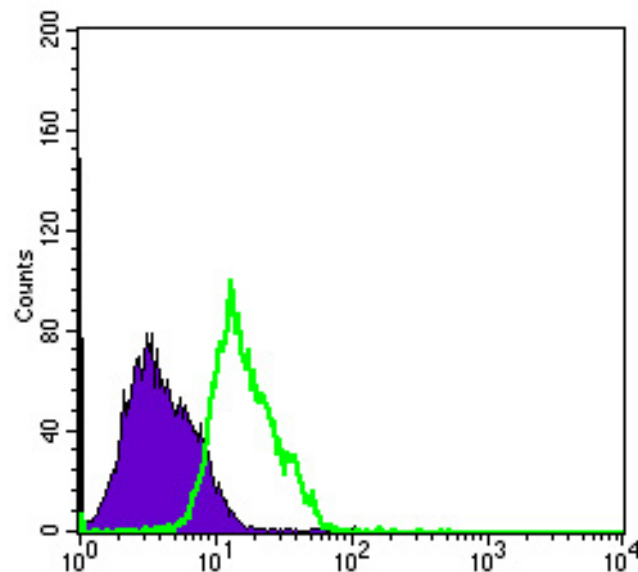
Usage suggestions

This product can be used in immunological reaction related experiments. For more information, please consult technical personnel.

Products Images



Western Blot analysis using Msi1 Monoclonal Antibody against NTERA-2 cell lysate.



Flow cytometric analysis of PC-2 cells using Msi1 Monoclonal Antibody (green) and negative control (purple).

